

**CREW'S SUBDIVISION OF BLOCKS 3 AND 4
OF
CREW'S ADDITION**
ACCORDING TO PLAT ON FILE IN PLAT BOOK 2, PAGE 3-A
PUBLIC RECORDS COLUMBIA COUNTY, FLA.

DEDICATION

KNOWN ALL MEN BY THESE PRESENT THAT
J. W. CREWS AND HIS WIFE LILLIE E. CREWS, OWNERS,
HAVE CAUSED THE LANDS EMBRACED IN BLOCKS
3 AND 4 OF CREW'S ADDITION TO BE SURVEYED,
LAID OUT AND PLATTED INTO LOTS.

SIGNED J. W. Crews, SEAL, WITNESS Annie C. Hosford
SIGNED Lillie E. Crews, SEAL, WITNESS Mary U. Hosford

SURVEYORS CERTIFICATE

I HEREBY CERTIFY THAT I AM A DULY AUTHORIZED
LAND SURVEYOR AND THAT A SURVEY OF THE LAND
PLATTED WAS MADE UNDER MY DIRECTION AND
THAT 4"x4"x16" CONCRETE MARKERS HAS BEEN
PLACED AT EACH LOT CORNER

SIGNED B. S. Moore
CER. NO. 439



ACKNOWLEDGMENT

STATE OF FLORIDA,
COUNTY OF COLUMBIA
I HEREBY CERTIFY THAT ON THIS 14 DAY
OF AUGUST, A.D. 1950 PERSONALLY APPEARED
BEFORE ME, A NOTARY PUBLIC, J. W. CREWS
AND LILLIE E. CREWS, WIFE OF SAID J. W. CREWS
TO ME WELL KNOWN AND KNOWN TO
ME TO BE THE INDIVIDUALS DESCRIBED
IN AND WHO EXECUTED THE FOREGOING
DEDICATION AND THAT THEY EXECUTED
THE SAME FREELY AND VOLUNTARY FOR
THE PURPOSE THEREIN EXPRESSED.
WITNESS MY HAND AND OFFICIAL
SEAL AT LAKE CITY, FLORIDA ON THE
LAST AFORESAID DATE.

Annie C. Hosford
NOTARY PUBLIC, STATE OF FLORIDA

**APPROVED BY CITY COMMISSION
LAKE CITY, FLORIDA**

SIGNED Murray S. ... MAYOR
ATTEST ... CLERK
DATE August 14, 1950

**APPROVED BY COUNTY COMMISSION
COLUMBIA COUNTY, FLORIDA**

SIGNED J. H. McClinton CHAIRMAN
ATTEST Hugh R. B. Sumner CLERK
DATE Sept 5, 1950

4027

810
1950

Sept
Plat

Hugh R. B. Sumner

**CREW'S SUBDIVISION OF BLOCKS 3 AND 4
OF
CREW'S ADDITION
ACCORDING TO PLAT ON FILE IN PLAT BOOK 2, PAGE 8-A
PUBLIC RECORDS COLUMBIA COUNTY, FLA.**

DEDICATION

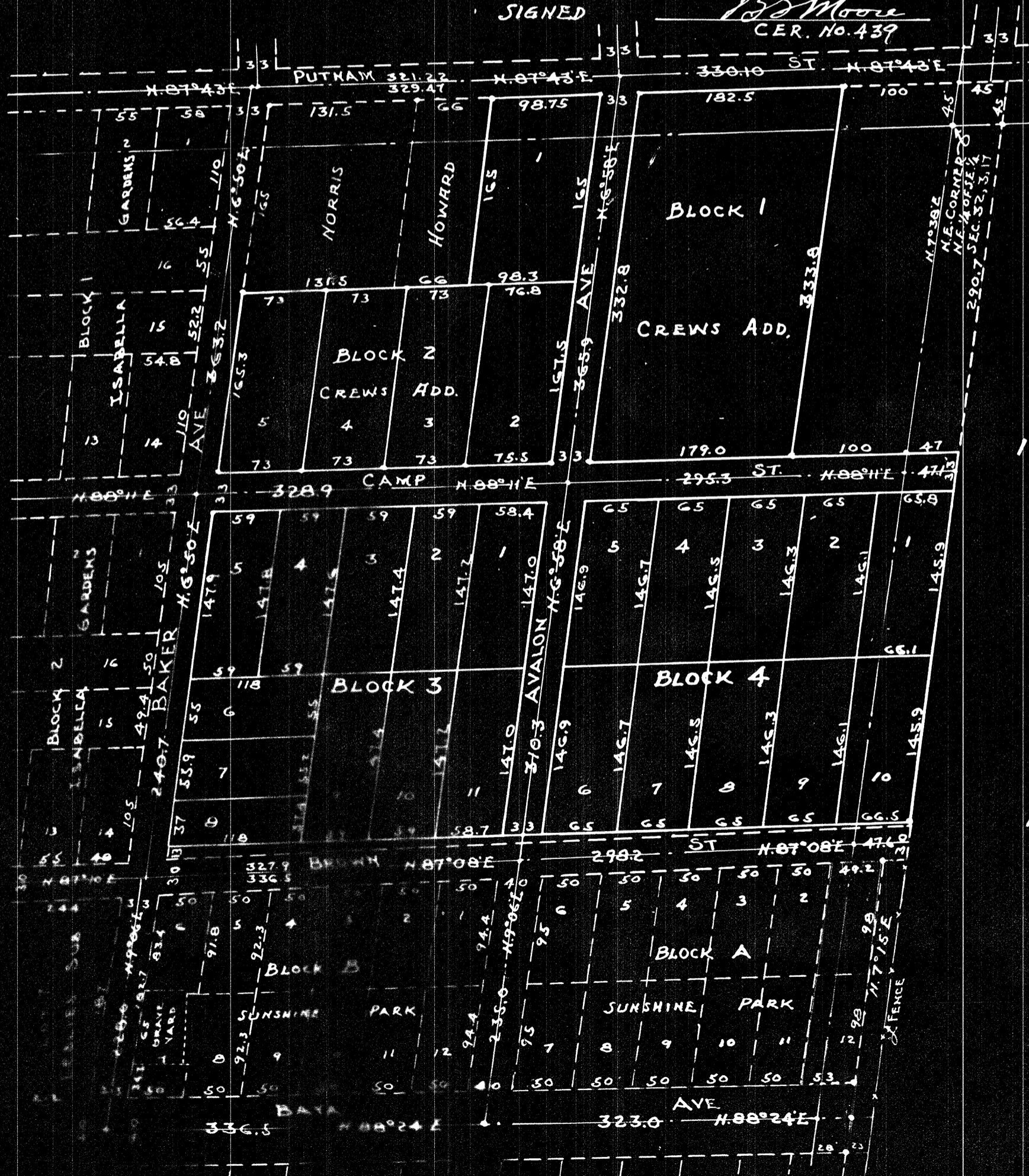
KNOWN ALL MEN BY THESE PRESENT THAT
J. W. CREWS AND HIS WIFE LILLIE E. CREWS, OWNERS,
HAVE CAUSED THE LANDS EMBRACED IN BLOCKS
3 AND 4 OF CREW'S ADDITION TO BE SURVEYED,
LAID OUT AND PLATTED INTO LOTS.

SIGNED J. W. Crews, SEAL, WITNESS Ann C. Hosford
SIGNED Lillie E. Crews, SEAL, WITNESS Mary V. Hosford

SURVEYORS CERTIFICATE

I HEREBY CERTIFY THAT I AM A DULY AUTHORIZED
LAND SURVEYOR AND THAT A SURVEY OF THE LAND
PLATTED WAS MADE UNDER MY DIRECTION AND
THAT 4"x4"x16" CONCRETE MARKERS HAS BEEN
PLACED AT EACH LOT CORNER

SIGNED B. S. Moore
CER. No. 439



ACKNOWLEDGMENT

STATE OF FLORIDA,
COUNTY OF COLUMBIA
I HEREBY CERTIFY THAT ON THIS 14 DAY
OF AUGUST, A.D. 1950 PERSONALLY APPEARED
BEFORE ME A NOTARY PUBLIC J. W. CREWS
AND LILLIE E. CREWS, WIFE OF SAID J. W. CREWS
TO ME WELL KNOWN AND KNOWN TO
ME TO BE THE INDIVIDUALS DESCRIBED
IN AND WHO EXECUTED THE FOREGOING
DEDICATION AND THAT THEY EXECUTED
THE SAME FREELY AND VOLUNTARY FOR
THE PURPOSE THEREIN EXPRESSED.
WITNESS MY HAND AND OFFICIAL
SEAL AT LAKE CITY, FLORIDA ON THE
LAST AFORESAID DATE.

Ann C. Hosford
NOTARY PUBLIC, STATE OF FLORIDA

APPROVED BY CITY COMMISSION
LAKE CITY, FLORIDA

SIGNED Murray S. ... MAYOR
ATTEST C. K. ... CLERK
DATE Sept 14, 1950

APPROVED BY COUNTY COMMISSION
COLUMBIA COUNTY, FLORIDA

SIGNED J. H. ... CHAIRMAN
ATTEST Hugh B. ... CLERK
DATE Sept 5, 1950

4027
800
1950
Sept Plat
Hugh B. Sumner