



# DAVIS SUBDIVISION

IN  
SECTION 20 TOWNSHIP 2 SOUTH RANGE 16 EAST  
COLUMBIA COUNTY FLORIDA

## DEDICATION

KNOW ALL MEN BY THESE PRESENTS:  
That VAN-LAMB, INC., a Florida corporation, as Owner, and Lenvil H. Dicks, as Mortgagee, and COLUMBIA COUNTY BANK, a Florida banking corporation, as Assignee of said Mortgagee, have caused the lands herein described to be surveyed, laid out, subdivided and platted to be known as DAVIS SUBDIVISION, and that the streets, roads and easements as shown are hereby dedicated to the public for the uses and purposes thereon stated.

In Witness Whereof, the said VAN-LAMB, INC., Lenvil H. Dicks and COLUMBIA COUNTY BANK have executed and caused these presents to be executed in their respective names, by their respective officers duly authorized and their respective corporate seals to be affixed.

VAN-LAMB, INC., a Florida corporation,

COLUMBIA COUNTY BANK, a Florida banking corporation,

BY: \_\_\_\_\_  
Its President

BY: \_\_\_\_\_  
Its Executive Vice President

ATTEST: \_\_\_\_\_  
Its Secretary  
(CORPORATE SEAL)

ATTEST: \_\_\_\_\_  
Its Cashier  
(CORPORATE SEAL)

\_\_\_\_\_  
LENVIL H. DICKS (SEAL)

## ACKNOWLEDGMENT

STATE OF FLORIDA

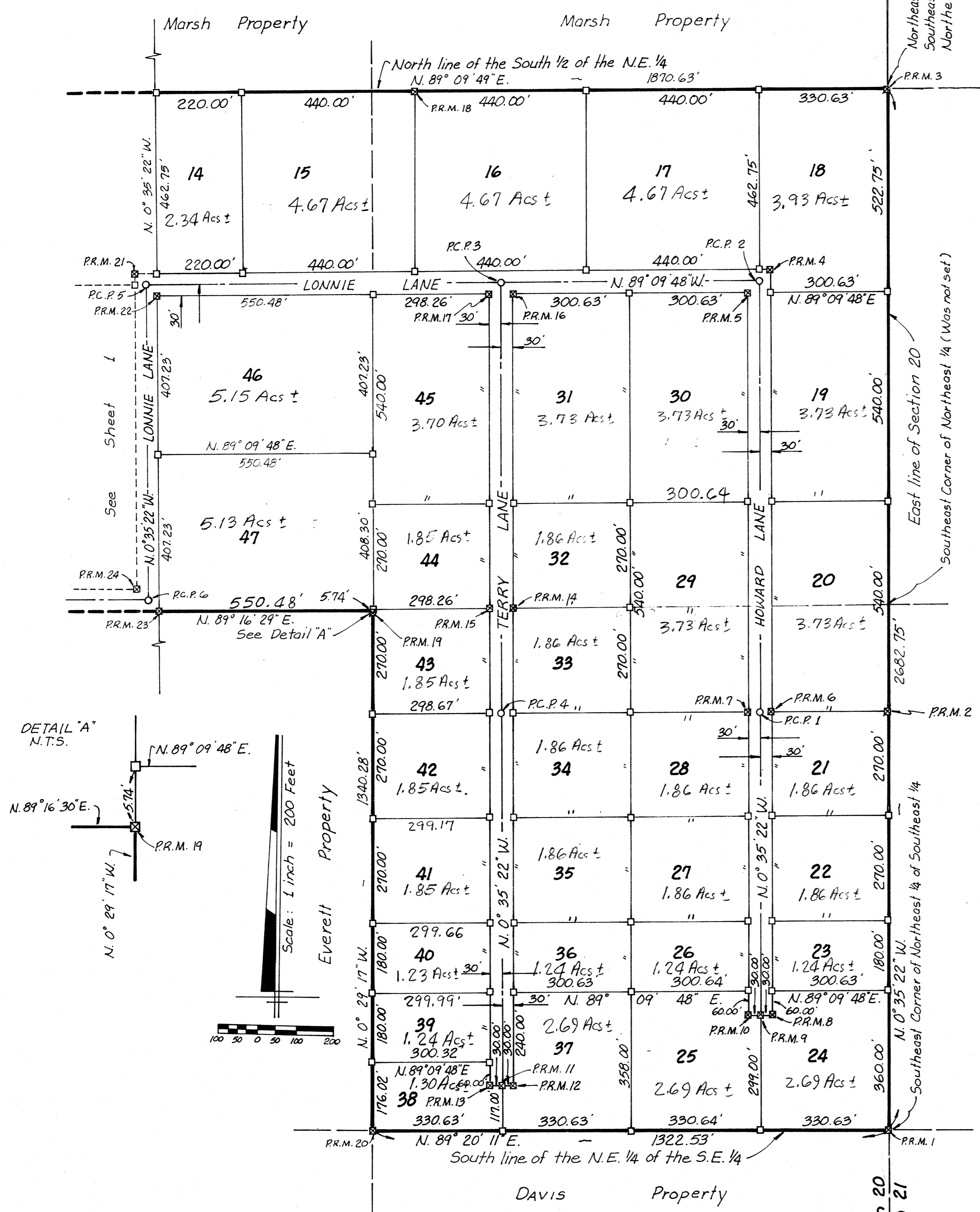
COUNTY OF COLUMBIA

The foregoing instrument was acknowledged before me this \_\_\_\_ day of April, 1974, by John J. Lamb and Howard E. Van Arsdall, Jr., as President and Secretary respectively of VAN-LAMB, INC., a Florida corporation; by Robert L. Green and L. Thomas Witt, as Executive Vice President and Cashier respectively of COLUMBIA COUNTY BANK, a Florida banking corporation; and by Lenvil H. Dicks.

\_\_\_\_\_  
Notary Public, State of Florida

My Commission expires: \_\_\_\_\_

(NOTARIAL SEAL)



DWF

# DAVIS SUBDIVISION

IN

SECTION 20 TOWNSHIP 2 SOUTH RANGE 16 EAST  
COLUMBIA COUNTY FLORIDA

## DESCRIPTION

The North 1/2 of the Northwest 1/4, The Southeast 1/4 of the Northwest 1/4, The South 1/2 of the Northwest 1/4, and the Northeast 1/4 of the Southeast 1/4, All in Section 20, Township 2 South, Range 16 East, Columbia County, Florida.

## LEGEND

- = 4"x4" Concrete monument found as noted.
- = 4"x4" Concrete monument with Cap embedded in top stamped L.L. Lee and Associates, Inc. and Surveyors Registration Number and date.
- Bearings projected from State Plane Coordinates.
- ▣ = 4"x4" Concrete P.R.M. with brass cap stamped L.L. Lee and Associates, Inc. and Surveyors Registration Number, and P.R.M. Number.
- = Permanent Control Point - Iron Pipe or Iron Rod with cap stamped P.C.P. with Surveyors Registration Number and P.C.P. Number found as noted.
- All Subdivision Roads are to be 60 feet, 30 feet each side of Centerline.
- N.T.S. = Not to Scale

## CERTIFICATE OF CLERK

*W. E. Brews*  
Clerk of Circuit Court in and for  
Columbia County, Florida.

File Number 74-4245  
I HEREBY CERTIFY that I have examined the foregoing Plat and find that it complies in form with Chapter 177 Florida Statutes and was filed for Record this 7th day of June A.D. 1974 in Plat Book 4 Page 11 of the Public Records of Columbia County, Florida.

## APPROVED BY BOARD OF COUNTY COMMISSIONERS, COLUMBIA COUNTY, FLORIDA

Signed: \_\_\_\_\_, Chairman  
Attest *W. E. Brews*, Clerk  
Date: 6-7-74

State of Florida, County of Columbia  
Filed for record on this 7th day  
June 1974 and received  
Plat 4-218A  
Book No. 4 on Page No. 11-11A  
Witness my hand and official seal the first day of  
June, 1974.  
W. E. Brews, Clerk Circuit Court  
By *Chow* D.C.

## SURVEYORS CERTIFICATION

I HEREBY CERTIFY that I am a duly authorized Land Surveyor and that a survey of the lands hereon described has been made under my responsible direction and supervision and subdivided as shown on this Plat and that Permanent Reference Monuments and Permanent Control Points have been placed according to Chapter 177, Florida Statutes, Plans being a true and correct representation of said survey.

Signed: *W. E. Brews*  
L.L. Lee and Associates, Inc.  
P.L.S.  
Fla. Reg. No. 1130  
Date: \_\_\_\_\_

