

DOUBLE RUN ACRES

BEING A PART OF THE SE1/4, SECTION 17, TOWNSHIP 3 SOUTH, RANGE 17 EAST, COLUMBIA COUNTY, FLA.

77-5462
 RECORDED
 BOOK 4 PAGE 51
 OCT 10-2 PM 4:19
 J. S. Child

DESCRIPTION:

COMMENCE AT THE NORTHWEST CORNER OF SE1/4, SECTION 17, TOWNSHIP 3 SOUTH, RANGE 17 EAST, COLUMBIA COUNTY, FLORIDA AND RUN THENCE N. 89° 39' 52" E. ALONG THE NORTH LINE OF SAID SE1/4, 1002.09 FEET TO THE NORTHEAST CORNER OF "FIVE POINTS ACRES SUBDIVISION" AS RECORDED IN THE PUBLIC RECORDS OF COLUMBIA COUNTY, FLA. FOR A POINT OF BEGINNING THENCE CONTINUE N. 89° 39' 52" E. ALONG SAID NORTH LINE OF SE1/4 334.03 FEET, THENCE S. 0° 29' 40" E. 667.46 FEET, THENCE RUN N. 89° 23' 51" E. 736.78 FEET, THENCE S. 0° 05' 59" E., 1212.44 FEET, THENCE N. 89° 23' 51" E. 597.00 FEET TO THE WESTERLY LINE OF DOUBLE RUN ROAD, A COUNTY MAINTAINED ROAD, THENCE RUN S. 20° 41' 20" W. ALONG SAID WESTERLY LINE OF DOUBLE RUN ROAD, THENCE RUN S. 87° 14' 01" W. 960.06 FEET, THENCE RUN S. 0° 03' 50" E. 127.28 FEET TO THE SOUTH LINE OF SAID SECTION 17, THENCE RUN S. 88° 35' 20" W., ALONG SAID SOUTH LINE OF SECTION 17, 300.15 FEET TO THE SOUTHEAST CORNER OF SAID "FIVE POINTS ACRES", THENCE RUN N. 0° 25' 56" W. ALONG THE EAST LINE OF SAID "FIVE POINTS ACRES" 2673.25 FEET TO THE POINT OF BEGINNING.

DEDICATION:

KNOW ALL MEN BY THESE PRESENT THAT J. MICHAEL CARTER, JR., MANAGING PARTNER OF CARTER AND MILTON OF LAKE CITY, FLORIDA, A PARTNERSHIP HAS CAUSED THE LANDS HEREON DESCRIBED TO BE SURVEYED, LAIDOUT, SUBDIVIDED, AND PLATTED TO BE KNOWN AS "DOUBLE RUN ACRES" AND THAT THE STREETS AND EASEMENTS AS SHOWN ARE HEREBY DEDICATED TO THE PUBLIC.

WITNESS Cyara H. Blocker
 WITNESS Patti Evans

SIGNED J. Michael Carter, Jr.

ACKNOWLEDGEMENT:

STATE OF FLORIDA
 COUNTY OF COLUMBIA
 ON THIS 21st DAY OF July, 1977 A.D. BEFORE ME PERSONALLY APPEARED J. MICHAEL CARTER, JR., MANAGING PARTNER OF CARTER AND MILTON OF LAKE CITY, FLA., A PARTNERSHIP, TO ME WELL KNOWN AND KNOWN TO ME TO BE THE INDIVIDUAL DESCRIBED IN AND WHO EXECUTED THE FOREGOING DEDICATION, ACKNOWLEDGED THAT HE EXECUTED THE SAME FOR THE PURPOSES THEREIN EXPRESSED WHEREUPON IT IS PRAYED THAT THE SAME MAY BE RECORDED.

WITNESS MY HAND AND OFFICIAL SEAL AT LAKE CITY, STATE OF FLORIDA THIS 21st DAY OF July, 1977, A.D.

SIGNED Cyara H. Blocker
 NOTARY PUBLIC, STATE OF FLORIDA
 MY COMMISSION EXPIRES August 5, 1977

SURVEYORS CERTIFICATE:

I HEREBY CERTIFY THAT ON JULY 7th, 1977 A.D., THE LANDS HEREON DESCRIBED WERE SURVEYED UNDER MY DIRECTION AND THAT PERMANENT REFERENCE MONUMENTS AND PERMANENT CONTROL POINTS WERE PLACED AS SHOWN HEREON IN ACCORDANCE WITH THE STATUTES OF THE STATE OF FLORIDA PERTAINING TO MAPS AND PLATS AND THAT THIS PLAT IS A TRUE AND CORRECT PLAT OF THE LANDS HEREON SHOWN.

SIGNED W.C. Hale
 W. C. HALE, LAND SURVEYOR, FLORIDA CERTIFICATE NO. 1519

APPROVED BY BOARD OF COUNTY COMMISSIONERS:

COLUMBIA COUNTY, FLORIDA
 ATTEST Mary B. Child, CLERK
 DATE August 2, 1977

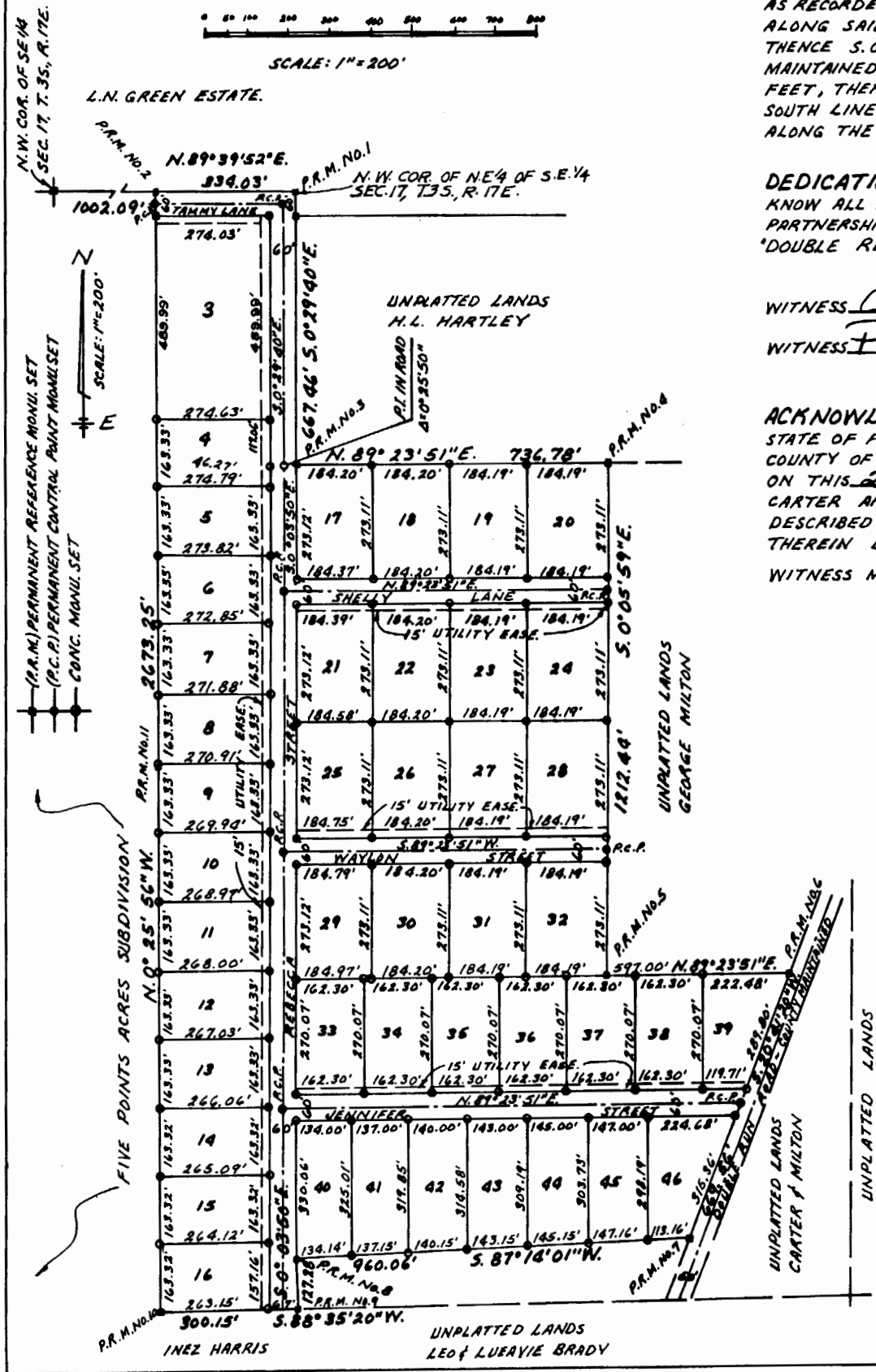
SIGNED Marion Mann, CHAIRMAN

CERTIFICATE OF CLERK:

FILE NO. 77-5462
 I HEREBY CERTIFY THAT I HAVE EXAMINED THE FOREGOING PLAT AND THAT IT COMPLIES IN FORM WITH CHAPTER 177, FLORIDA STATUTES AND WAS FILED FOR RECORD THIS 30th DAY OF August, 1977 A.D., IN PLAT BOOK 4, PAGE 51 OF THE PUBLIC RECORDS OF COLUMBIA COUNTY, FLORIDA.

SIGNED Mary B. Child
 CLERK OF CIRCUIT COURT
 COLUMBIA COUNTY, FLORIDA

Approved as to form.
Smart & Page
 County Attorney
 July 22, 1977



N.W. COR. OF SE1/4 SEC. 17, T. 3S, R. 17E.
 L.N. GREEN ESTATE.
 P.R.M. NO. 2
 N. 89° 39' 52" E. 334.03'
 1002.09'
 P.R.M. NO. 1
 N.W. COR. OF NE1/4 OF S.E. 1/4 SEC. 17, T. 3S, R. 17E.
 P.R.M. NO. 3
 N. 89° 23' 51" E. 736.78'
 P.R.M. NO. 4
 S. 0° 05' 59" E. 1212.44'
 P.R.M. NO. 5
 N. 89° 23' 51" E. 597.00'
 P.R.M. NO. 6
 S. 20° 41' 20" W. 960.06'
 P.R.M. NO. 7
 S. 0° 03' 50" E. 127.28'
 P.R.M. NO. 8
 S. 88° 35' 20" W. 300.15'
 P.R.M. NO. 9
 N. 0° 25' 56" W. 2673.25'
 P.R.M. NO. 10
 N. 89° 39' 52" E. 334.03'
 P.R.M. NO. 11
 S. 0° 29' 40" E. 667.46'
 P.R.M. NO. 12
 N. 89° 23' 51" E. 736.78'
 P.R.M. NO. 13
 S. 0° 05' 59" E. 1212.44'
 P.R.M. NO. 14
 N. 89° 23' 51" E. 597.00'
 P.R.M. NO. 15
 S. 20° 41' 20" W. 960.06'
 P.R.M. NO. 16
 S. 0° 03' 50" E. 127.28'
 P.R.M. NO. 17
 S. 88° 35' 20" W. 300.15'
 P.R.M. NO. 18
 N. 0° 25' 56" W. 2673.25'
 P.R.M. NO. 19
 N. 89° 39' 52" E. 334.03'
 P.R.M. NO. 20
 S. 0° 29' 40" E. 667.46'
 P.R.M. NO. 21
 N. 89° 23' 51" E. 736.78'
 P.R.M. NO. 22
 S. 0° 05' 59" E. 1212.44'
 P.R.M. NO. 23
 N. 89° 23' 51" E. 597.00'
 P.R.M. NO. 24
 S. 20° 41' 20" W. 960.06'
 P.R.M. NO. 25
 S. 0° 03' 50" E. 127.28'
 P.R.M. NO. 26
 S. 88° 35' 20" W. 300.15'
 P.R.M. NO. 27
 N. 0° 25' 56" W. 2673.25'
 P.R.M. NO. 28
 N. 89° 39' 52" E. 334.03'
 P.R.M. NO. 29
 S. 0° 29' 40" E. 667.46'
 P.R.M. NO. 30
 N. 89° 23' 51" E. 736.78'
 P.R.M. NO. 31
 S. 0° 05' 59" E. 1212.44'
 P.R.M. NO. 32
 N. 89° 23' 51" E. 597.00'
 P.R.M. NO. 33
 S. 20° 41' 20" W. 960.06'
 P.R.M. NO. 34
 S. 0° 03' 50" E. 127.28'
 P.R.M. NO. 35
 S. 88° 35' 20" W. 300.15'
 P.R.M. NO. 36
 N. 0° 25' 56" W. 2673.25'
 P.R.M. NO. 37
 N. 89° 39' 52" E. 334.03'
 P.R.M. NO. 38
 S. 0° 29' 40" E. 667.46'
 P.R.M. NO. 39
 N. 89° 23' 51" E. 736.78'
 P.R.M. NO. 40
 S. 0° 05' 59" E. 1212.44'
 P.R.M. NO. 41
 N. 89° 23' 51" E. 597.00'
 P.R.M. NO. 42
 S. 20° 41' 20" W. 960.06'
 P.R.M. NO. 43
 S. 0° 03' 50" E. 127.28'
 P.R.M. NO. 44
 S. 88° 35' 20" W. 300.15'
 P.R.M. NO. 45
 N. 0° 25' 56" W. 2673.25'
 P.R.M. NO. 46
 N. 89° 39' 52" E. 334.03'
 P.R.M. NO. 47
 S. 0° 29' 40" E. 667.46'
 P.R.M. NO. 48
 N. 89° 23' 51" E. 736.78'
 P.R.M. NO. 49
 S. 0° 05' 59" E. 1212.44'
 P.R.M. NO. 50
 N. 89° 23' 51" E. 597.00'