

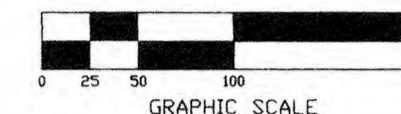
"EAGLES RIDGE PHASE 2"

IN SECTION 15, TOWNSHIP 4 SOUTH, RANGE 17 EAST,
COLUMBIA COUNTY, FLORIDA

CURVE TABLE

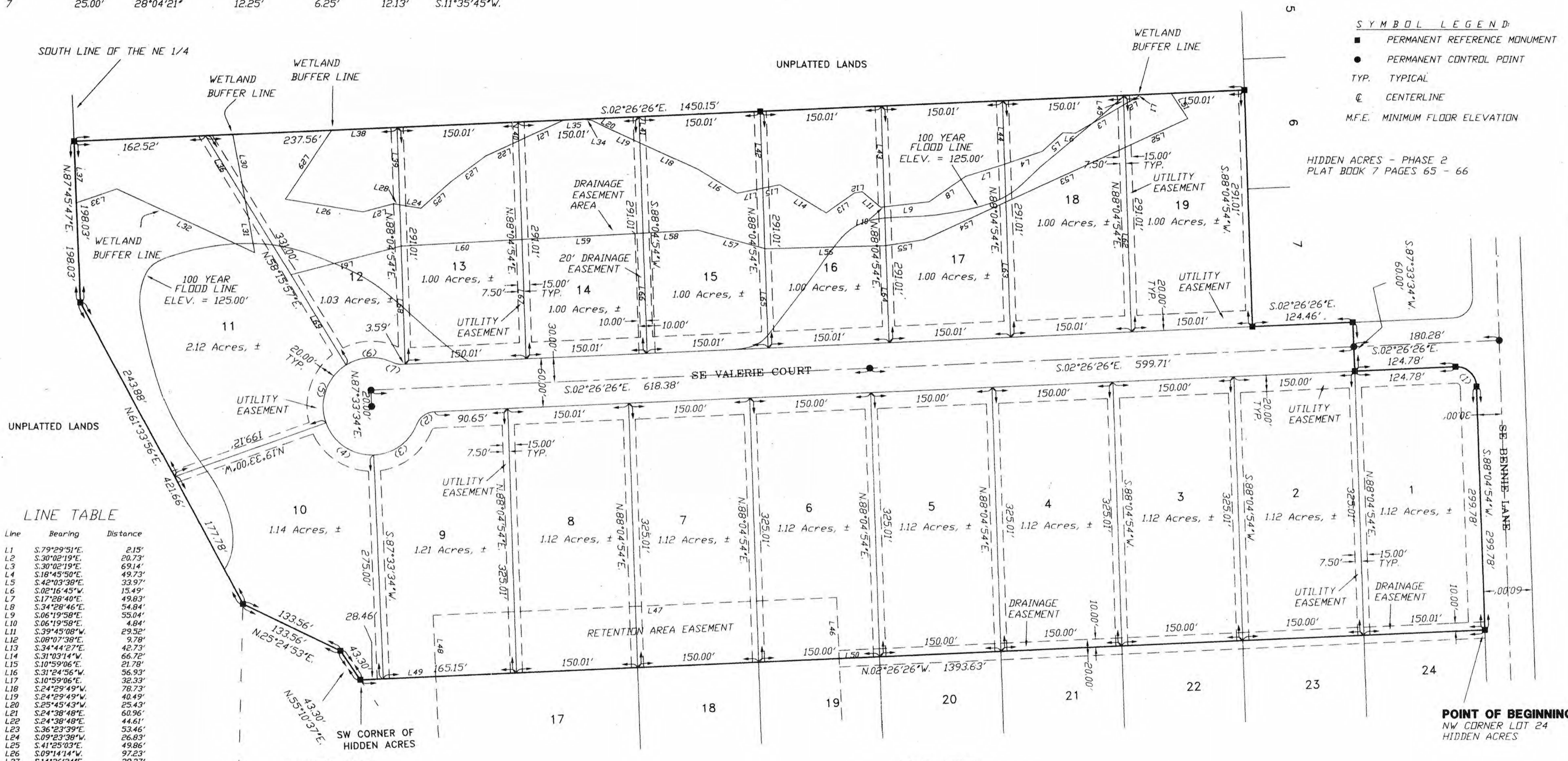
NO.	RADIUS	DELTA	ARC	TANGENT	CHORD	CHORD BEARING
1	25.00'	90°31'19"	39.50'	25.23'	35.52'	S.42°49'14"W.
2	25.00'	65°41'03"	28.66'	16.14'	27.12'	S.35°16'57"E.
3	60.00'	65°41'03"	68.78'	38.73'	65.08'	S.35°16'57"E.
4	60.00'	72°53'25"	76.33'	44.31'	71.29'	S.34°00'17"W.
5	60.00'	77°48'57"	81.49'	48.43'	75.37'	N.70°38'32"W.
6	60.00'	57°21'59"	60.07'	32.83'	57.60'	N.03°03'04"W.
7	25.00'	28°04'21"	12.25'	6.25'	12.13'	S.11°35'45"W.

SCALE: 1" = 100'



- SYMBOL LEGEND:**
- PERMANENT REFERENCE MONUMENT
 - PERMANENT CONTROL POINT
 - TYP. TYPICAL
 - ⊙ CENTERLINE
 - M.F.E. MINIMUM FLOOR ELEVATION

HIDDEN ACRES - PHASE 2
PLAT BOOK 7 PAGES 65 - 66



LINE TABLE

Line	Bearing	Distance
L1	S.79°29'51"E.	2.15'
L2	S.30°02'19"E.	20.73'
L3	S.30°02'19"E.	69.14'
L4	S.18°45'50"E.	49.73'
L5	S.42°03'38"E.	33.97'
L6	S.02°16'45"W.	15.45'
L7	S.17°28'40"E.	49.83'
L8	S.34°28'46"E.	54.84'
L9	S.06°19'58"E.	4.84'
L10	S.06°19'58"E.	4.84'
L11	S.39°45'08"W.	29.52'
L12	S.08°07'38"E.	9.78'
L13	S.34°44'27"E.	42.73'
L14	S.31°03'14"W.	66.72'
L15	S.10°59'06"E.	21.78'
L16	S.31°24'56"W.	56.93'
L17	S.10°59'06"E.	32.33'
L18	S.24°29'49"W.	78.73'
L19	S.24°29'49"W.	40.49'
L20	S.25°45'43"W.	25.43'
L21	S.24°38'48"E.	60.96'
L22	S.24°38'48"E.	44.61'
L23	S.36°23'39"E.	53.46'
L24	S.09°23'38"W.	26.83'
L25	S.41°25'03"E.	49.86'
L26	S.09°14'14"W.	97.23'
L27	S.14°36'34"E.	39.37'
L28	S.09°23'38"W.	7.53'
L29	N.56°01'44"W.	102.75'
L30	N.79°23'22"E.	82.27'
L31	N.79°23'22"E.	65.76'
L32	S.24°43'17"W.	187.66'
L33	S.18°45'23"E.	52.99'
L34	S.07°37'11"W.	10.88'
L35	S.02°26'26"E.	24.25'
L36	N.58°15'57"E.	93.38'
L37	N.87°45'47"E.	75.75'
L38	N.02°26'26"W.	89.96'
L39	N.88°04'54"E.	55.62'
L40	N.88°04'54"E.	23.04'
L41	N.88°04'54"E.	32.26'
L42	N.88°04'54"E.	94.85'
L43	N.88°04'54"E.	124.12'
L44	N.88°04'54"E.	78.10'
L45	N.88°04'54"E.	11.70'
L46	S.87°33'34"W.	75.00'
L47	S.02°26'26"E.	500.00'
L48	N.87°33'34"W.	75.00'
L49	S.02°26'26"E.	65.15'
L50	N.02°26'26"W.	49.99'

LINE TABLE

Line	Bearing	Distance
L51	N.56°34'10"E.	37.15'
L52	S.24°28'48"E.	85.28'
L53	S.24°28'48"E.	162.43'
L54	S.24°28'48"E.	111.80'
L55	S.08°57'15"E.	47.11'
L56	S.01°23'30"E.	149.10'
L57	S.15°12'09"W.	87.13'
L58	S.02°58'41"E.	67.65'
L59	S.02°58'41"E.	150.03'
L60	S.03°02'15"E.	150.03'
L61	S.14°16'52"E.	140.53'
L62	N.88°04'54"E.	227.16'
L63	N.88°04'54"E.	166.51'
L64	N.88°04'54"E.	118.91'
L65	N.88°30'36"E.	121.62'
L66	N.88°04'54"E.	147.40'
L67	N.88°04'54"E.	145.99'
L68	N.88°04'54"E.	144.43'
L69	N.58°21'58"E.	129.74'

100 YEAR FLOOD NOTICE:
LOTS 11, 12, 13, 14, 15, 16, 17, 18, AND 19
ARE SUBJECT TO THE 100 YEAR FLOOD. THE 100 YEAR FLOOD
IS ESTABLISHED TO BE 125.00 FEET AND A MINIMUM FLOOR
ELEVATION HAS BEEN ESTABLISHED TO BE 126.00 FEET BY
CURTIS KEEN, PE #23836.

DEVELOPER:

SUBRANDY LIMITED PARTNERSHIP
1286 U.S. HWY 90 W, LAKE CITY, FLORIDA 32025
386-752-8585

BRITT SURVEYING
LAND SURVEYORS AND MAPPERS
830 WEST DUVAL STREET
LAKE CITY, FLORIDA 32055
TELEPHONE: (386) 752-7163 FAX: (386) 752-5573 WORK ORDER # L-11679

FILE NUMBER 2004021002
FILED AND RECORDED IN THE OFFICIAL RECORDS
OF COLUMBIA COUNTY, FLORIDA
S/24/04 10:56 AM AT 11:56 O'CLOCK A.M.
RECORD VERIFIED
P. DEWITT CASON
CLERK OF COURTS
COLUMBIA COUNTY, FLORIDA
BY: *[Signature]*

