

FILE NO. 78-6444  
RECORDED  
BOOK 4 PAGE 88  
1978 JUL 21 PM 4:38  
Mary B. Chissel  
CLERK OF CIRCUIT COURT  
COLUMBIA COUNTY, FLORIDA

APPROVED BY BOARD OF COUNTY COMMISSIONERS  
COLUMBIA COUNTY, FLORIDA

Signed: Marion Mann, Chairman  
Attest: Mary B. Chissel, Clerk  
Date: July 20, 1978

# HAWKS RIDGE ACRES

IN  
SECTION 35, TOWNSHIP 6 SOUTH, RANGE 17 EAST  
COLUMBIA COUNTY, FLORIDA

### DESCRIPTION

A Tract of land irregular in shape lying in and being a part of Section 35, Township 6 South, Range 17 East, Columbia County, Florida, being more particularly described as follows:  
COMMENCE at the Northeast corner of Section 35, Township 6 South, Range 17 East, Columbia County, Florida and run 5.0° 07' 14" W. along the East line of said Section 35 a distance of 1314.67 feet to the Northeast corner of the Southeast 1/4 of the Northeast 1/4 of Section 35, and the POINT OF BEGINNING; thence continue 5.0° 07' 14" W. still along said East line of Section 35 a distance of 2679.35 feet to the Southeast corner of the Northeast 1/4 of the Southeast 1/4, Section 35, thence S. 88° 11' 28" W. along the South line of said Northeast 1/4 of the Southeast 1/4 a distance of 657.11 feet to the Southwest corner of the Southeast 1/4 of the Northeast 1/4 of the Southeast 1/4, said Section 35; thence N. 0° 11' 00" E. along the West line of said Southeast 1/4 of the Northeast 1/4 of the Southeast 1/4 a distance of 657.70 feet to the Southeast corner of the Northwest 1/4 of the Northeast 1/4 of the Southeast 1/4, said Section 35; thence S. 88° 13' 15" W. along the South line of said Northwest 1/4 of the Northeast 1/4 of the Southeast 1/4, a distance of 656.38 feet to the Southwest corner of said Northwest 1/4 of the Northeast 1/4 of the Southeast 1/4, thence N. 0° 14' 46" E. along the West line of said Northwest 1/4 of the Northeast 1/4 of the Southeast 1/4 a distance of 658.07 feet to the Southwest corner of the Northwest 1/4 of the Southeast 1/4 of the Northeast 1/4 of the Southeast 1/4, said Section 35; thence S. 88° 15' 02" W. along the South line of said Southwest 1/4 of the Northeast 1/4 of the Southeast 1/4, a distance of 467.20 feet; thence N. 0° 07' 14" E. 412.50 feet; thence N. 88° 15' 02" E. 212.50 feet; thence N. 0° 07' 14" E. 472.50 feet; thence N. 88° 15' 02" E. 374.81 feet; thence N. 0° 07' 14" E. 430.91 feet to the North line of said Southeast 1/4 of the Northeast 1/4 of Section 35; thence N. 88° 18' 37" E. along said North line 1186.14 feet to the POINT OF BEGINNING. Containing 75.13 Acres more or less.

### LEGEND

1. 4x4 Concrete monument (Permanent Reference Monument) with brass cap in top stamped L.L. Lee & Assoc. Inc. with surveyors registration number, date and monument number.
2. 4x4 Concrete monument (L.L. Lee & Assoc. Inc.)
3. 4x4 Concrete monument found in place.
4. Permanent Control Point (P.C.P.) - 1/2" Iron rod with cap stamped with P.C.P. number and surveyors registration number
5. 1/2" Iron Pipe, unless otherwise stated on plat.
6. Boundary and bearings based on prior work in this area by Daniel M. Craft, R.L.S. No. 2001, plat dated March 17, 1975

### DEDICATION

KNOW ALL MEN BY THESE PRESENTS that J. W. HALEY and JULIA S. HALEY, President and Secretary respectively of "SUWANNEE DEVELOPMENT CORPORATION", a Florida Corporation, as owners, have caused the lands herein described to be surveyed, subdivided and platted to be known as "HAWKS RIDGE ACRES", and that all streets, roads and easements as shown are hereby dedicated to the perpetual use of the public for proper uses and purposes thereon stated IN WITNESS WHEREOF J. W. HALEY and JULIA S. HALEY, President and Secretary respectively of "SUWANNEE DEVELOPMENT CORPORATION", a Florida Corporation, have caused these presents to be executed with their seals duly affixed hereto Signed, sealed and delivered in the presence of:

Witness  
J. W. HALEY, President  
Witness  
JULIA S. HALEY, Secretary

### ACKNOWLEDGEMENT

#### STATE OF FLORIDA COUNTY OF COLUMBIA

I HEREBY CERTIFY that on this 21st day of July, A.D. 1978 before me personally appeared J. W. HALEY and JULIA S. HALEY, President and Secretary respectively of "SUWANNEE DEVELOPMENT CORPORATION", a Florida Corporation, to me known to be the officers and individuals described in and who executed the foregoing dedication, and they acknowledge execution thereof for and on behalf of said Corporation and said individuals and the seal of said Corporation is duly affixed thereto WITNESS my hand and seal at Columbia, State of Florida, this 21st day of July, 1978.

My Commission expires \_\_\_\_\_  
Notary Public, State of Florida

### COUNTY ATTORNEY'S CERTIFICATE

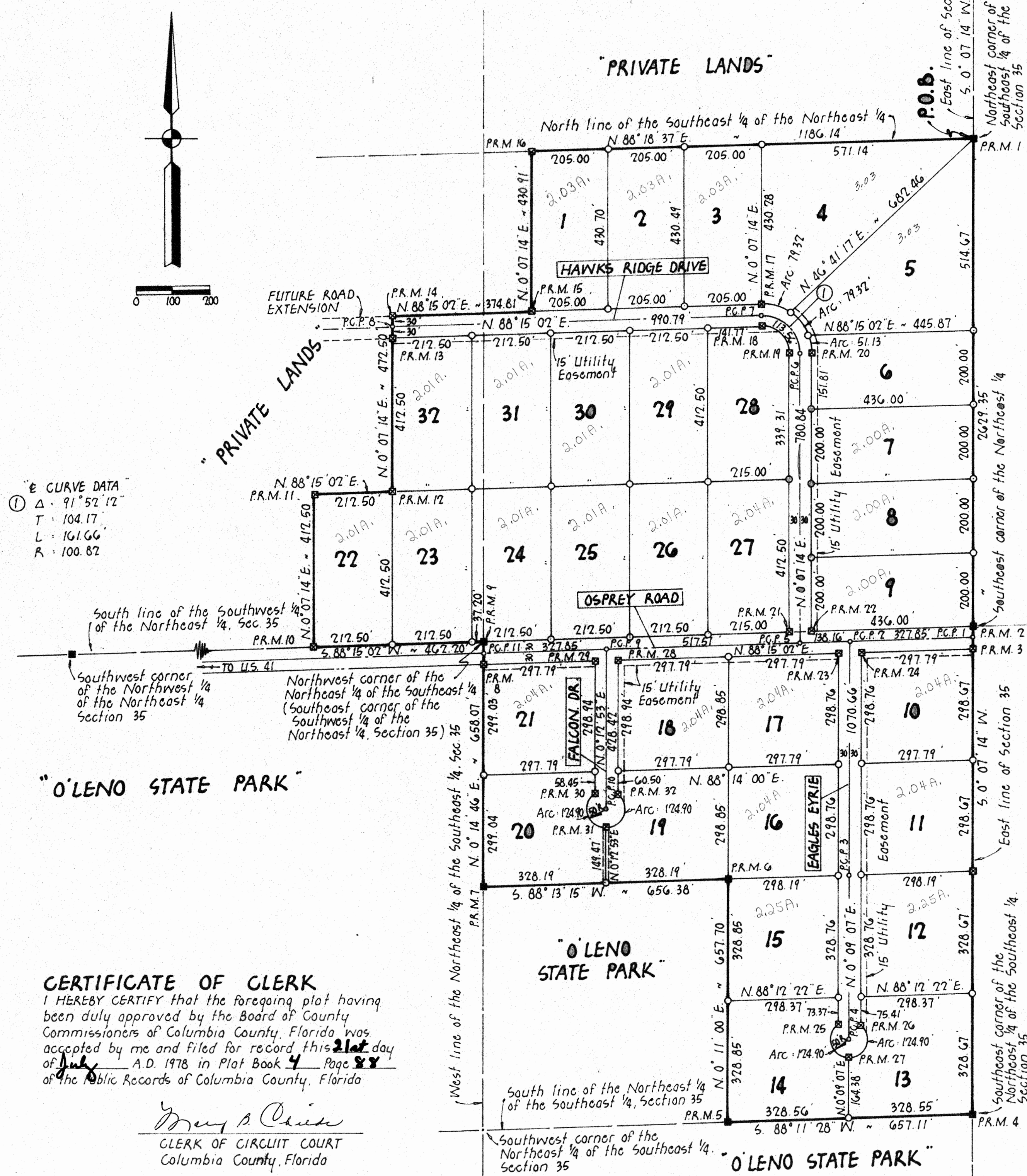
I HEREBY CERTIFY that I have examined the foregoing plat and that it complies in form with all the requirements of Chapter 177, Florida Statutes.

DATE: \_\_\_\_\_  
COUNTY ATTORNEY

### SURVEYORS CERTIFICATION

I HEREBY CERTIFY that I am a duly authorized land surveyor and that this plat is a true and correct representation of the lands surveyed and shown hereon, that the survey was made under my responsible direction and supervision, that permanent reference monuments and permanent control points have been placed as shown, and that the survey data shown complies with all of the requirements of Chapter 177, Florida Statutes.

Signed: Lonnie L. Lee  
LONNIE L. LEE, P.L.S.  
FLA REG. CERT. NO. 1950  
DATE: 4-28-78



① CURVE DATA  
Δ = 91° 52' 12"  
T = 104.17'  
L = 161.66'  
R = 100.82'

"O'LENO STATE PARK"

**CERTIFICATE OF CLERK**  
I HEREBY CERTIFY that the foregoing plat having been duly approved by the Board of County Commissioners of Columbia County, Florida was accepted by me and filed for record this 21st day of July, A.D. 1978 in Plat Book 4 Page 88 of the Public Records of Columbia County, Florida

Signed: Mary B. Chissel  
CLERK OF CIRCUIT COURT  
Columbia County, Florida