

"HILLS OF HUNTSVILLE"

SECTIONS 8 AND 9, TOWNSHIP 3 SOUTH, RANGE 16 EAST,
COLUMBIA COUNTY, FLORIDA

PLAT BOOK 8
PAGES 126
SHEET 1 OF 4

DEDICATION:

KNOW ALL MEN BY THESE PRESENTS THAT WESTRIDGE, INC., AS OWNER, AND MERCANTILE BANK AS MORTGAGEE, HAS CAUSED THE LANDS HEREON DESCRIBED, TO BE SURVEYED, SUBDIVIDED AND PLATTED, TO BE KNOWN AS "HILLS OF HUNTSVILLE", AND THAT ALL ROADS, STREETS AND ALL EASEMENTS FOR UTILITIES, DRAINAGE AND OTHER PURPOSES INCIDENT THERETO AS SHOWN AND/OR DEPICTED HEREON ARE HEREBY DEDICATED TO THE PERPETUAL USE OF THE PUBLIC.

ATTESTS:

Holly C. Harrover WITNESS AS TO OWNER
Chris Bullard WITNESS AS TO OWNER
Clarence Cannon WITNESS AS TO MORTGAGEE
April Rogers WITNESS AS TO MORTGAGEE
Chris Bullard V.P. CHAIRMAN
Clarence Cannon SENIOR VICE-PRESIDENT MERCANTILE BANK

ACKNOWLEDGMENT: STATE OF FLORIDA, COUNTY OF COLUMBIA.

I HEREBY CERTIFY THAT ON THIS 14th DAY OF September, 2006 A.D., BEFORE ME PERSONALLY APPEARED CHRIS BULLARD, AS VICE-PRESIDENT OF WESTRIDGE, INC., AS OWNER, TO ME KNOWN TO BE THE PERSON DESCRIBED IN AND WHO EXECUTED THE FORGOING DEDICATION AND ACKNOWLEDGED THE EXECUTION THEREOF TO BE HIS FREE ACT AND DEED FOR THE USES AND PURPOSES THEREIN EXPRESSED. IN WITNESS WHEREOF I HAVE SET MY HAND AND SEAL ON THE ABOVE DATE.

Holly C. Harrover
NOTARY PUBLIC, STATE OF FLORIDA AT LARGE
MY COMMISSION EXPIRES: May 18, 2010

ACKNOWLEDGMENT: STATE OF FLORIDA, COUNTY OF COLUMBIA.

I HEREBY CERTIFY THAT ON THIS 14 DAY OF September, 2006 A.D., BEFORE ME PERSONALLY APPEARED CLARENCE CANNON, SENIOR VICE-PRESIDENT OF MERCANTILE BANK, AS MORTGAGEE, TO ME KNOWN TO BE THE PERSON DESCRIBED IN AND WHO EXECUTED THE FORGOING DEDICATION AND ACKNOWLEDGED THE EXECUTION THEREOF TO BE HIS FREE ACT AND DEED FOR THE USES AND PURPOSES THEREIN EXPRESSED. IN WITNESS WHEREOF I HAVE SET MY HAND AND SEAL ON THE ABOVE DATE.

Chris Bullard
NOTARY PUBLIC, STATE OF FLORIDA AT LARGE
MY COMMISSION EXPIRES: Aug 29, 2010

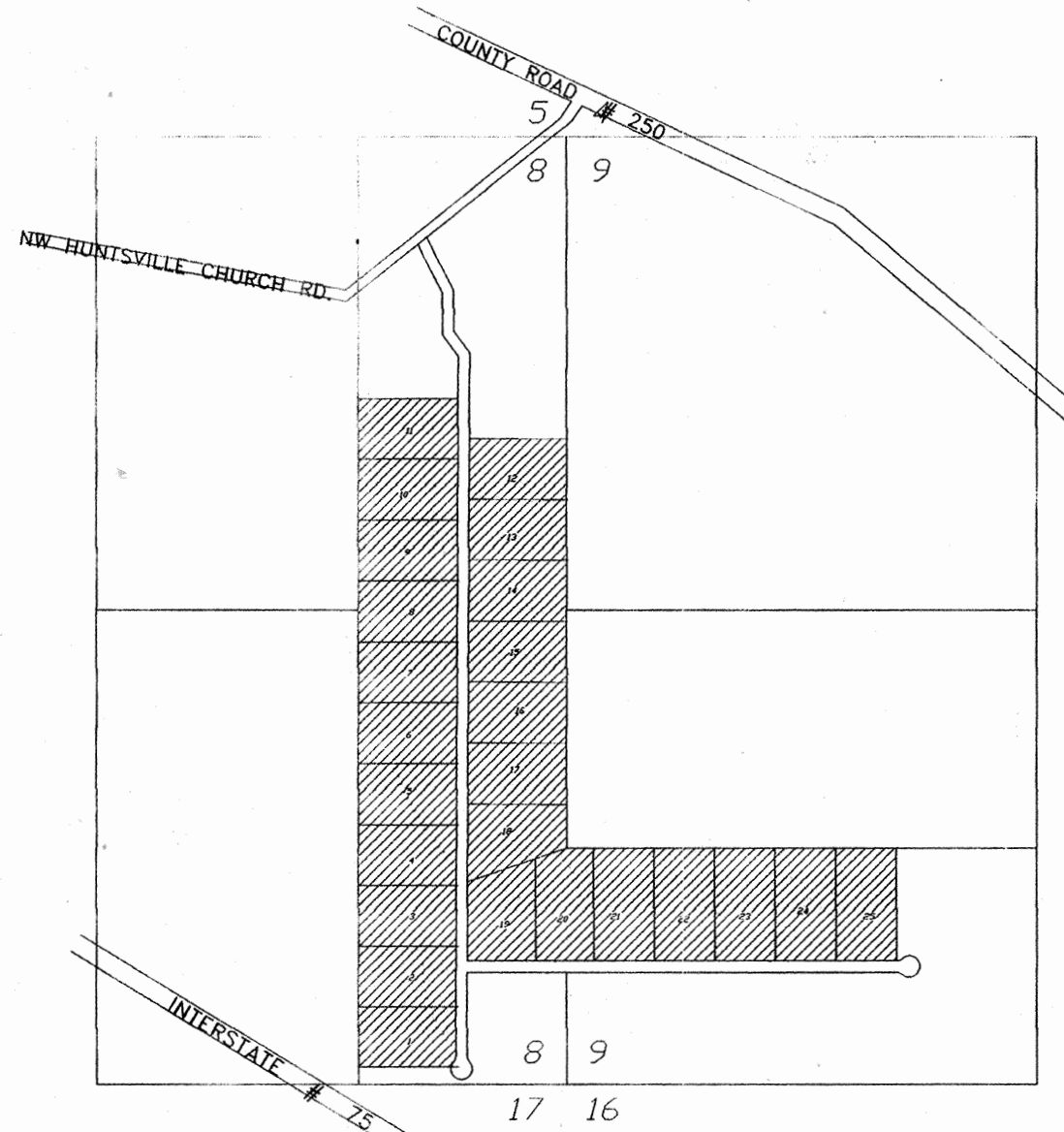
SPECIAL FLOOD NOTICE:
THE 100 YEAR FLOOD ELEVATIONS SHOWN HEREON ARE BASED ON THE ELEVATIONS ESTABLISHED BY HUEY HAWKINS PE. THE ELEVATIONS ARE TAKEN FROM THE CONSTRUCTION PLANS AS APPROVED BY SRWMD AND COLUMBIA COUNTY, FLORIDA.

SURVEYOR'S NOTES:

- BOUNDARY BASED ON MONUMENTATION FOUND.
- BEARINGS ARE BASED ON THE DEED OF RECORD AS SUPPLIED OUR OFFICE FOR THE BOUNDARY SURVEY.
- SOME PORTIONS OF THIS PARCEL ARE IN ZONE "A" AND MAY BE SUBJECT TO FLOODING. HOWEVER, NO BASE FLOOD ELEVATION HAS BEEN DETERMINED FOR ZONE "A". SOME PORTIONS OF THIS PARCEL ARE IN ZONE "X" AND ARE DETERMINED TO BE OUTSIDE THE 500 YEAR FLOOD PLAIN AS PER FLOOD INSURANCE RATE MAP, DATED 6 JAN. 1988 COMMUNITY PANEL NO. 120070 0125 B. HOWEVER, THE FLOOD INSURANCE RATE MAPS ARE SUBJECT TO CHANGE.
- IF THEY EXIST, NO UNDERGROUND ENCROACHMENTS AND/OR UTILITIES WERE LOCATED FOR THIS SURVEY EXCEPT AS SHOWN HEREON.
- THIS SURVEY WAS COMPLETED WITHOUT THE BENEFIT OF A TITLE COMMITMENT OR A TITLE POLICY.
- EASEMENTS ARE AS SHOWN HEREON.
- THERE MAY BE ADDITIONAL RESTRICTIONS THAT ARE NOT RECORDED ON THIS PLAT THAT MAY BE FOUND IN THE PUBLIC RECORDS OF COLUMBIA COUNTY.
- SURVEY CLOSURE PRECISION EXCEEDS THE REQUIREMENTS OF THE MINIMUM TECHNICAL STANDARDS FOR SURVEYING IN THE STATE OF FLORIDA.
- PRELIMINARY PLAN APPROVED ON AUGUST 04, 2005.
- THERE ARE EXISTING IMPROVEMENTS ON SAID PARCELS THAT WERE NOT LOCATED FOR THE PURPOSE OF THIS SURVEY.

NOTICE:

ALL PLATTED UTILITY EASEMENTS SHALL PROVIDE THAT SUCH EASEMENTS SHALL ALSO BE FOR THE CONSTRUCTION, INSTALLATION, MAINTENANCE, AND OPERATION OF CABLE TELEVISION SERVICES; PROVIDED, HOWEVER, NO SUCH CONSTRUCTION, INSTALLATION, MAINTENANCE, AND OPERATION OF CABLE TELEVISION SERVICES SHALL INTERFERE WITH THE FACILITIES AND SERVICES OF ELECTRIC, TELEPHONE, GAS OR OTHER PUBLIC UTILITY. IN THE EVENT THAT A CABLE TELEVISION COMPANY DAMAGES THE FACILITIES OF A PUBLIC UTILITY, IT SHALL BE SOLELY RESPONSIBLE FOR THE DAMAGES.



EAST 1/2 SECTION 8
TOWNSHIP 3 SOUTH,
RANGE 16 EAST

WEST 1/2 SECTION 9
TOWNSHIP 3 SOUTH,
RANGE 16 EAST

LOCATION SKETCH
NOT TO SCALE

NOTICE:
THIS PLAT AS RECORDED IN ITS GRAPHICAL FORM, IS THE OFFICIAL DEPICTION OF THE SUBDIVIDED LANDS DESCRIBED HEREIN AND WILL IN NO CIRCUMSTANCES BE SUPPLANTED IN AUTHORITY BY OTHER GRAPHICAL OR DIGITAL FORM OF THE PLAT. THERE MAY BE ADDITIONAL RESTRICTIONS THAT ARE NOT RECORDED ON THIS PLAT THAT MAY BE FOUND IN THE PUBLIC RECORDS OF THIS COUNTY.

DEVELOPER:

CHRIS A. BULLARD, V.P.
WESTRIDGE, INC.
P.O. BOX 1432
LAKE CITY, FLORIDA, 32056
PHONE: 386-754-6699

COUNTY ATTORNEY CERTIFICATE:

I HEREBY CERTIFY THAT I HAVE EXAMINED THE FORGOING PLAT AND THAT IT COMPLIES IN FORM WITH THE COLUMBIA COUNTY SUBDIVISION ORDINANCE AND CHAPTER 177 OF THE FLORIDA STATUTES.

DATE: September 21, 2006
Marlin Seagle
COUNTY ATTORNEY

APPROVAL: STATE OF FLORIDA, COUNTY OF COLUMBIA.

THIS PLAT IS HEREBY APPROVED BY THE COLUMBIA COUNTY COMMISSION THIS DAY OF JULY 6, 2006 A.D.

[Signature]
CHAIRMAN

CERTIFICATE OF CLERK OF CIRCUIT COURT:

THIS PLAT HAVING BEEN APPROVED BY THE COLUMBIA COUNTY BOARD OF COUNTY COMMISSIONERS IS ACCEPTED FOR FILE AND RECORDED THIS 8 DAY OF NOVEMBER, 2006, A.D., IN PLAT BOOK 8, PAGE 126-129

[Signature]
CLERK OF COURT, COLUMBIA COUNTY, FLORIDA

APPROVAL: PUBLIC WORKS DEPARTMENT, STATE OF FLORIDA, COUNTY OF COLUMBIA.

I HEREBY CERTIFY THAT THE IMPROVEMENTS HAVE BEEN CONSTRUCTED IN AN ACCEPTABLE MANNER AND IN ACCORDANCE WITH COUNTY SPECIFICATIONS AND THAT A MAINTENANCE AND REPAIR SURETY OR CASH BOND IN THE AMOUNT OF \$39,051.00 THAT A PERFORMANCE BOND OR INSTRUMENT IN THE AMOUNT OF \$... HAS BEEN POSTED TO ASSURE COMPLETION OF ALL REQUIRED IMPROVEMENTS IN CASE OF DEFAULT.

Wayle Crowder 10/31/06
DIRECTOR OF PUBLIC WORKS DATE

CERTIFICATE OF COUNTY SURVEYOR:

KNOW ALL MEN BY THESE PRESENTS, THAT THE UNDERSIGNED, BEING A LICENSED AND REGISTERED LAND SURVEYOR, AS PROVIDED UNDER CHAPTER 472, FLORIDA STATUTES AND IS IN GOOD STANDING WITH THE BOARD OF LAND SURVEYORS, DOES HEREBY CERTIFY ON BEHALF OF COLUMBIA COUNTY, FLORIDA ON THE DATE BELOW I HAVE REVIEWED THIS PLAT FOR CONFORMITY TO CHAPTER 177 FLORIDA STATUTES; AND SAID PLAT MEETS ALL THE REQUIREMENTS OF CHAPTER 177 AS AMENDED.

NAME: Timothy A. DeBene DATE: 9/13/06 REGISTRATION #: 5594
PRINT: TIMOTHY A. DEBENE, PLS
DONALD F. LEE & ASSOC.

SURVEYOR'S CERTIFICATE:

I HEREBY CERTIFY THIS TO BE A TRUE AND CORRECT REPRESENTATION OF THE LAND SURVEYED AND SHOWN HEREON, THAT THE SURVEY WAS MADE UNDER MY RESPONSIBLE SUPERVISION, DIRECTION AND CONTROL, THAT PERMANENT REFERENCE MONUMENTS HAVE BEEN SET AS SHOWN AND THAT SURVEY DATA COMPLIES WITH THE COLUMBIA COUNTY, SUBDIVISION ORDINANCE AND CHAPTER 177 OF THE FLORIDA STATUTES.

[Signature] 9/14/06
DATE



BRITT SURVEYING

LAND SURVEYORS AND MAPPERS

1426 WEST DUVAL STREET
LAKE CITY, FLORIDA 32055

TELEPHONE: (386) 752-7163 FAX: (386) 752-5573 WORK ORDER # L-15283

OFFICIAL RECORDS BOOK PAGE 1161/1548

FILE NUMBER 2006026633
FILED AND RECORDED IN THE OFFICIAL RECORDS OF COLUMBIA COUNTY, FLORIDA
11/8 2006 AT 10:44 O'CLOCK P.M.
RECORD CLERK
P. DEWITT CASON
CLERK OF COURTS
COLUMBIA COUNTY, FLORIDA
BY: Marlin Seagle D.C.



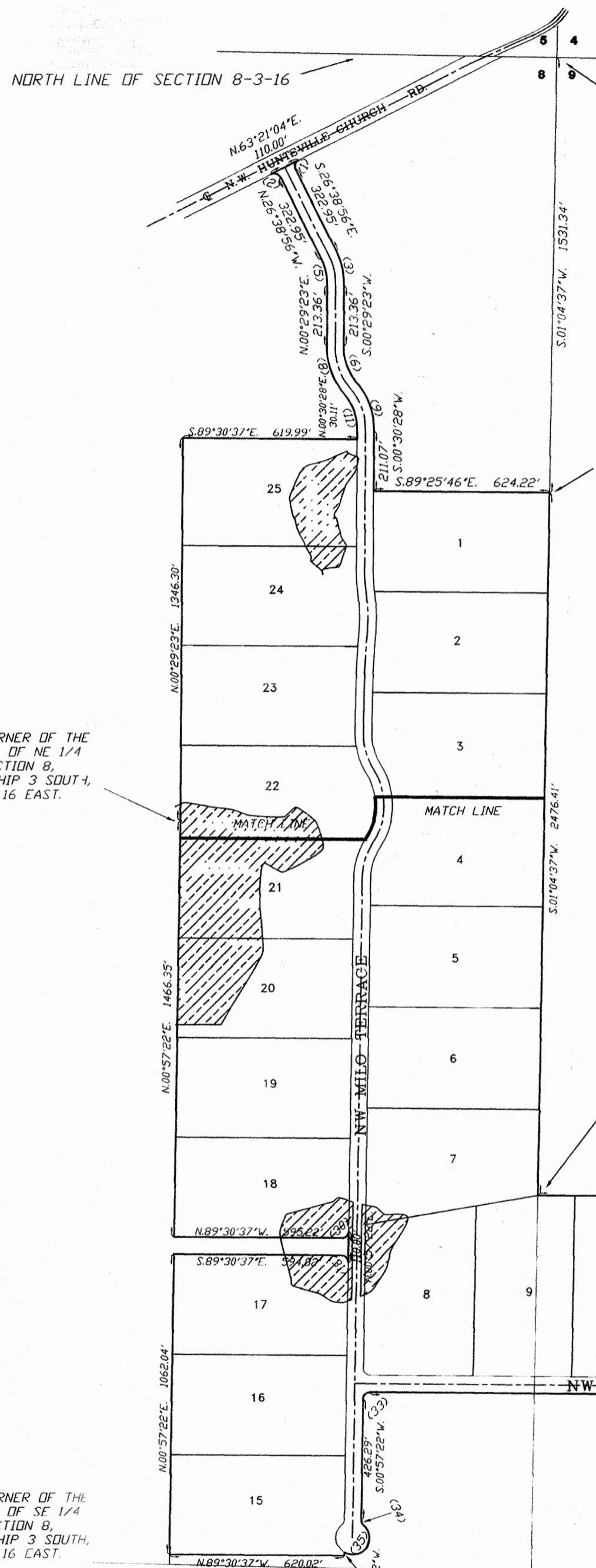
"HILLS OF HUNTSVILLE"

SECTIONS 8 AND 9, TOWNSHIP 3 SOUTH, RANGE 16 EAST,
COLUMBIA COUNTY, FLORIDA

PLAT BOOK 8

PAGES 127

SHEET 2 OF 4



POINT OF COMMENCEMENT
NORTHEAST CORNER OF
SECTION 8, TOWNSHIP 3
SOUTH, RANGE 16 EAST.

POINT OF BEGINNING

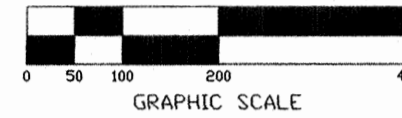
SW CORNER OF THE
SE 1/4 OF NE 1/4
OF SECTION 8,
TOWNSHIP 3 SOUTH,
RANGE 16 EAST.

NORTHWEST CORNER OF
SW 1/4 OF SW 1/4 OF
SECTION 9, TOWNSHIP
3 SOUTH, RANGE 16 EAST
ALSO BEING THE
NORTHEAST CORNER OF
SE 1/4 OF SE 1/4 OF
SECTION 8, TOWNSHIP
3 SOUTH, RANGE 16 EAST.
4"x4" CONCRETE
MONUMENT FOUND
PSM # 1079

4" ROUND CONCRETE
MONUMENT FOUND
PSM # 1519
SE CORNER OF
SECTION 8



SCALE: 1" = 200'



SYMBOL LEGEND:

- P.R.M. PERMANENT REFERENCE MONUMENT
- PLS PROFESSIONAL LAND SURVEYOR
- C CENTERLINE
- 4"x4" CONCRETE MONUMENT
- MFE MINIMUM FLOOR ELEVATION
- TYP TYPICAL
- PERMANENT CONTROL POINT
- MIN. FLOOR EL. 92.5 MINIMUM FLOOR ELEVATION
- PSM PROFESSIONAL SURVEYOR AND MAPPER

UNLESS OTHERWISE SHOWN HEREON ALL CORNERS
SHOWN HEREON ARE L.S. BRITT PLS #5757

DESCRIPTION:

A PART OF SECTIONS 8 AND 9 OF TOWNSHIP 3 SOUTH, RANGE 16 EAST, COLUMBIA COUNTY, FLORIDA, MORE PARTICULARLY DESCRIBED AS FOLLOWS: COMMENCE AT THE NORTHEAST CORNER OF SECTION 8, TOWNSHIP 3 SOUTH, RANGE 16 EAST, AND RUN S.01°04'37"W, ALONG THE EAST LINE THEREOF, A DISTANCE OF 1531.34 FEET FOR A POINT OF BEGINNING. THENCE CONTINUE S.01°04'37"W, A DISTANCE OF 2476.41 FEET TO THE NORTHWEST CORNER OF THE SW 1/4 OF THE SW 1/4 OF SAID SECTION 9; THENCE S.89°25'46"E, ALONG THE NORTH LINE OF THE SOUTH 1/2 OF THE SAID SW 1/4, A DISTANCE OF 1854.27 FEET; THENCE S.01°06'01"W, A DISTANCE OF 636.93 FEET; SAID POINT BEING A POINT OF CURVE OF A CURVE CONCAVE TO THE NORTHWEST, HAVING A RADIUS OF 25.00 FEET, AN INCLUDED ANGLE OF 49°40'47", A CHORD BEARING OF N.65°43'50"E, AND A CHORD DISTANCE OF 21.00 FEET; THENCE NORTHEASTERLY ALONG THE ARC OF SAID CURVE FOR AN ARC DISTANCE OF 21.68 FEET TO A POINT OF REVERSE CURVE HAVING A RADIUS OF 60.00 FEET, AN INCLUDED ANGLE OF 279°21'34", A CHORD BEARING OF S.00°34'14"W, A CHORD DISTANCE OF 77.65 FEET; THENCE FOLLOWING THE ARC OF SAID CURVE TO THE RIGHT, AN ARC DISTANCE OF 292.54 FEET TO A POINT OF REVERSE CURVE HAVING A RADIUS OF 25.00 FEET, AN INCLUDED ANGLE OF 49°40'47", A CHORD BEARING OF N.64°35'22"W, A CHORD DISTANCE OF 21.00 FEET; THENCE NORTHWESTERLY ALONG THE ARC OF SAID CURVE, AN ARC DISTANCE OF 21.68 FEET; THENCE N.89°25'46"W, A DISTANCE OF 2439.64 FEET TO A POINT OF CURVE OF A CURVE TO THE LEFT HAVING A RADIUS OF 25.00 FEET, AN INCLUDED ANGLE OF 89°36'52", A CHORD BEARING OF S.45°45'48"W, A CHORD DISTANCE OF 35.24 FEET; THENCE SOUTHWESTERLY ALONG THE ARC OF SAID CURVE FOR AN ARC DISTANCE OF 39.10 FEET; THENCE S.00°57'22"W, A DISTANCE OF 426.29 FEET TO A POINT OF CURVE OF A CURVE TO THE LEFT HAVING A RADIUS OF 25.00 FEET, AN INCLUDED ANGLE OF 49°40'47", A CHORD BEARING OF S.23°53'02"E, A CHORD DISTANCE OF 21.00 FEET; THENCE SOUTHEASTERLY ALONG THE ARC OF SAID CURVE FOR AN ARC DISTANCE OF 21.68 FEET TO THE POINT OF REVERSE CURVE, HAVING A RADIUS OF 60.00 FEET, AN INCLUDED ANGLE OF 169°40'47", A CHORD BEARING OF S.35°06'58"W, A CHORD DISTANCE OF 119.51 FEET; THENCE SOUTHWESTERLY ALONG THE ARC OF SAID CURVE FOR AN ARC DISTANCE OF 177.69 FEET; THENCE S.00°57'22"W, A DISTANCE OF 12.72 FEET; THENCE N.89°30'37"W, A DISTANCE OF 620.02 FEET TO THE WEST LINE OF THE SE 1/4 OF THE SE 1/4 OF SAID SECTION 9; THENCE N.00°57'22"E, ALONG SAID WEST LINE, A DISTANCE OF 1062.04 FEET; THENCE S.89°30'37"E, A DISTANCE OF 594.92 FEET TO A POINT OF CURVE OF A CURVE CONCAVE TO THE SOUTHWEST, HAVING A RADIUS OF 25.00 FEET, AN INCLUDED ANGLE OF 90°27'59", A CHORD BEARING OF S.44°16'38"E, A CHORD DISTANCE OF 35.50 FEET; THENCE SOUTHEASTERLY ALONG THE ARC OF SAID CURVE FOR AN ARC DISTANCE OF 39.47 FEET; THENCE N.00°57'22"E, A DISTANCE OF 110.00 FEET TO A POINT OF CURVE OF A CURVE CONCAVE TO THE NORTHWEST HAVING A RADIUS OF 25.00 FEET, AN INCLUDED ANGLE OF 89°32'01", A CHORD BEARING OF S.45°43'22"W, A CHORD DISTANCE OF 35.21 FEET; THENCE SOUTHWESTERLY ALONG THE ARC OF SAID CURVE FOR AN ARC DISTANCE OF 39.07 FEET; THENCE N.89°30'37"W, A DISTANCE OF 595.22 FEET; THENCE N.00°57'22"E, A DISTANCE OF 1466.35 FEET TO THE SW CORNER OF THE SE 1/4 OF THE NE 1/4 OF SAID SECTION 9; THENCE N.00°29'23"E, A DISTANCE OF 1346.30 FEET; THENCE S.89°30'37"E, A DISTANCE OF 619.99 FEET; THENCE N.00°30'28"W, A DISTANCE OF 30.11 FEET TO A POINT OF CURVE OF A CURVE TO THE LEFT HAVING A RADIUS OF 200.00 FEET, AN INCLUDED ANGLE OF 40°27'33", A CHORD BEARING OF N.19°44'23"W, A CHORD DISTANCE OF 138.31 FEET; THENCE NORTHWESTERLY ALONG THE ARC OF SAID CURVE FOR AN ARC DISTANCE OF 141.23 FEET TO A POINT OF REVERSE CURVE HAVING A RADIUS OF 260.00 FEET, AN INCLUDED ANGLE OF 40°27'33", A CHORD BEARING OF N.19°44'23"W, A CHORD DISTANCE OF 179.81 FEET; THENCE NORTHERLY ALONG THE ARC OF SAID CURVE FOR AN ARC DISTANCE OF 183.60 FEET; THENCE N.00°29'23"E, A DISTANCE OF 213.36 FEET TO A POINT OF CURVE OF A CURVE TO THE LEFT HAVING A RADIUS OF 200.00 FEET, AN INCLUDED ANGLE OF 27°08'19", A CHORD BEARING OF N.13°04'47"W, A CHORD DISTANCE OF 93.85 FEET; THENCE NORTHWESTERLY ALONG THE ARC OF SAID CURVE FOR AN ARC DISTANCE OF 94.73 FEET; THENCE N.26°38'56"W, A DISTANCE OF 322.95 FEET TO A POINT OF CURVE OF A CURVE TO THE LEFT HAVING A RADIUS OF 25.00 FEET, AN INCLUDED ANGLE OF 90°00'00", A CHORD BEARING OF N.71°38'56"W, A CHORD DISTANCE OF 35.36 FEET; THENCE NORTHWESTERLY ALONG THE ARC OF SAID CURVE FOR AN ARC DISTANCE OF 39.27 FEET TO THE SOUTHEASTERLY RIGHT-OF-WAY LINE OF N. W. HUNTSVILLE CHURCH ROAD; THENCE N.63°21'04"E, ALONG SAID RIGHT-OF-WAY LINE, A DISTANCE OF 110.00 FEET TO A POINT OF CURVE OF A CURVE CONCAVE TO THE EAST, HAVING A RADIUS OF 25.00 FEET, AN INCLUDED ANGLE OF 90°00'00", A CHORD BEARING OF S.18°21'04"W, A CHORD DISTANCE OF 35.36 FEET; THENCE SOUTHWESTERLY ALONG THE ARC OF SAID CURVE FOR AN ARC DISTANCE OF 39.27 FEET; THENCE S.26°38'56"E, A DISTANCE OF 322.95 FEET TO A POINT OF CURVE OF A CURVE TO THE RIGHT HAVING A RADIUS OF 260.00 FEET, AN INCLUDED ANGLE OF 27°08'19", A CHORD BEARING OF S.13°04'47"E, A CHORD DISTANCE OF 122.00 FEET; THENCE SOUTHEASTERLY ALONG THE ARC OF SAID CURVE FOR AN ARC DISTANCE OF 123.15 FEET; THENCE S.00°29'23"W, A DISTANCE OF 213.36 FEET TO A POINT OF CURVE OF A CURVE TO THE LEFT HAVING A RADIUS OF 200.00 FEET, AN INCLUDED ANGLE OF 40°27'33", A CHORD BEARING OF S.19°44'23"E, A CHORD DISTANCE OF 138.31 FEET; THENCE SOUTHEASTERLY ALONG THE ARC OF SAID CURVE FOR AN ARC DISTANCE OF 141.23 FEET TO A POINT OF REVERSE CURVE HAVING A RADIUS OF 260.00 FEET, AN INCLUDED ANGLE OF 40°27'33", A CHORD BEARING OF S.19°44'23"E, A CHORD DISTANCE OF 179.81 FEET; THENCE ALONG THE ARC OF SAID CURVE FOR AN ARC DISTANCE OF 183.60 FEET TO THE END OF SAID CURVE; THENCE S.00°30'28"W, A DISTANCE OF 211.07 FEET; THENCE S.89°25'46"E, A DISTANCE OF 624.74 FEET TO THE POINT OF BEGINNING.
CONTAINING 136.65 ACRES MORE OR LESS.

OFFICIAL RECORDS BOOK PAGE 11011548
 C:\TEMP\115283f.in.dwg Wed Sep 06 10:32:21 2006

BRITT SURVEYING

LAND SURVEYORS AND MAPPERS

1426 WEST DUVAL STREET
LAKE CITY, FLORIDA 32055

TELEPHONE: (386) 752-7163 FAX: (386) 752-5573 WORK ORDER # L-15283

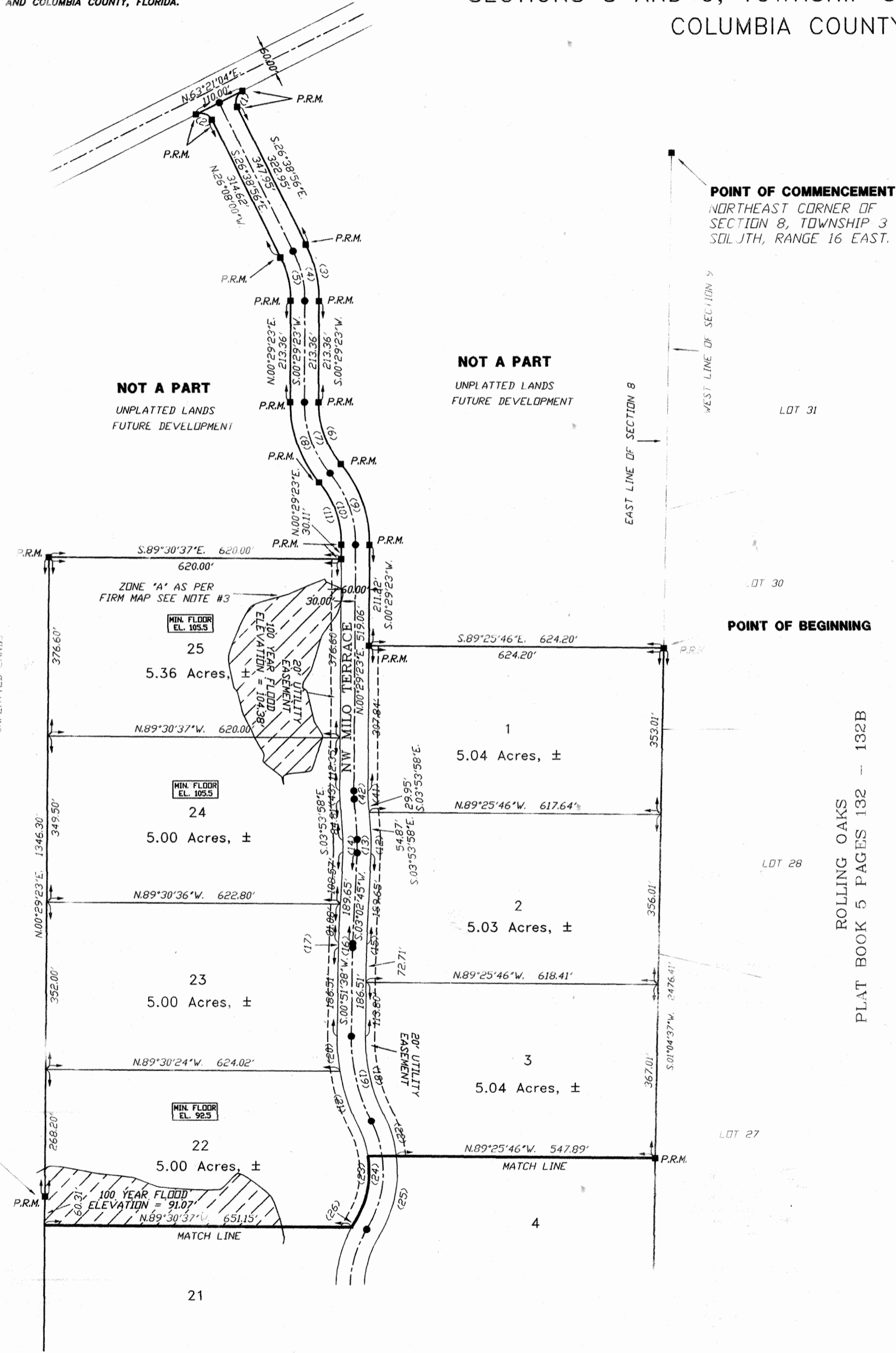
SPECIAL FLOOD NOTICE:
 THE 100 YEAR FLOOD ELEVATIONS SHOWN HEREON ARE BASED
 ON THE ELEVATIONS ESTABLISHED BY HUEY HAWKINS PE. THE
 ELEVATIONS ARE TAKEN FROM THE CONSTRUCTION PLANS AS
 APPROVED BY SRWMD AND COLUMBIA COUNTY, FLORIDA.

'HILLS OF HUNTSVILLE'

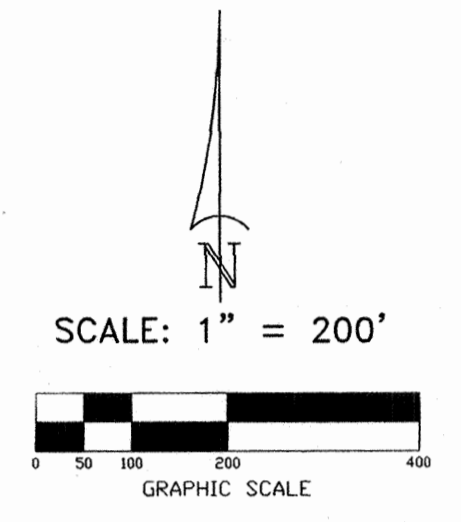
SECTIONS 8 AND 9, TOWNSHIP 3 SOUTH, RANGE 16 EAST,
 COLUMBIA COUNTY, FLORIDA

PLAT BOOK 8
 PAGES 128
 SHEET 3 OF 4

OFFICIAL RECORDS
 BOOK PAGE
 1107/1548



- SYMBOL LEGEND:**
- P.R.M. PERMANENT REFERENCE MONUMENT
 - PLS PROFESSIONAL LAND SURVEYOR
 - CL CENTERLINE
 - 4"x4" CONCRETE MONUMENT
 - MFE MINIMUM FLOOR ELEVATION
 - TYP TYPICAL
 - PERMANENT CONTROL POINT
 - MIN. FLOOR EL. 92.5 MINIMUM FLOOR ELEVATION
 - PSM PROFESSIONAL SURVEYOR AND MAPPER



CURVE TABLE

NO.	RADIUS	DELTA	ARC	TANGENT	CHORD	CHORD BEARING
1	25.00'	90°00'00"	39.27'	25.00'	35.36'	N18°21'04"E
2	25.00'	90°00'00"	39.27'	25.00'	35.36'	S71°38'56"E
3	260.00'	27°08'19"	123.15'	62.75'	122.00'	S13°04'47"E
4	230.00'	27°08'19"	108.94'	55.51'	107.93'	S13°04'47"E
5	200.00'	27°08'19"	94.73'	48.27'	93.85'	S13°04'47"E
6	200.00'	40°27'33"	141.23'	73.70'	138.31'	N19°44'23"W
7	230.00'	40°27'33"	162.41'	84.76'	159.06'	N19°44'23"W
8	260.00'	40°27'33"	183.60'	95.81'	179.81'	N19°44'23"W
9	260.00'	40°27'33"	183.60'	95.81'	179.81'	S19°44'23"E
10	230.00'	40°27'33"	162.41'	84.76'	159.06'	S19°44'23"E
11	200.00'	40°27'33"	141.23'	73.70'	138.31'	S19°44'23"E
12	260.00'	06°56'44"	31.52'	15.78'	31.50'	S00°25'37"E
13	230.00'	06°56'44"	27.88'	13.96'	27.86'	S00°25'37"E
14	200.00'	06°56'44"	24.24'	12.14'	24.23'	S00°25'37"E
15	200.00'	02°11'07"	7.63'	3.81'	7.63'	N01°57'12"E
16	230.00'	02°11'07"	8.77'	4.39'	8.77'	N01°57'12"E
17	260.00'	02°11'07"	9.92'	4.96'	9.92'	N01°57'12"E
18	353.17'	27°55'44"	172.15'	87.82'	170.45'	N13°06'14"W
19	383.17'	27°55'44"	186.78'	95.28'	184.93'	N13°06'14"W
20	413.17'	17°31'49"	74.99'	37.60'	74.88'	S04°20'19"E
21	260.00'	20°20'21"	126.42'	63.71'	125.92'	S18°19'11"E
22	260.00'	20°20'21"	92.30'	46.64'	91.81'	S16°53'55"E
23	200.00'	59°17'24"	206.96'	113.82'	197.85'	S02°34'36"W
24	230.00'	59°17'24"	238.00'	130.90'	227.53'	S02°34'36"W
25	260.00'	38°57'02"	176.75'	91.94'	173.37'	S12°44'47"W
26	260.00'	02°56'33"	13.35'	6.68'	13.35'	S30°45'02"W
27	260.00'	28°19'23"	128.53'	65.60'	127.22'	S15°07'03"W
28	230.00'	31°15'57"	125.51'	64.36'	123.96'	N16°35'20"E
29	200.00'	31°15'57"	109.14'	55.96'	107.79'	N16°35'20"E
30	25.00'	89°32'01"	39.07'	24.80'	35.21'	S45°43'22"W
31	25.00'	90°27'59"	39.47'	25.20'	35.50'	S44°16'38"E
32	25.00'	90°23'08"	39.44'	25.17'	35.47'	N44°14'12"W
33	25.00'	89°36'52"	39.10'	24.83'	35.24'	N45°45'48"E
34	25.00'	49°40'47"	21.68'	11.57'	21.00'	N23°53'02"W
35	60.00'	169°40'47"	177.69'	664.41'	119.51'	S36°06'58"W
36	60.00'	109°40'47"	114.86'	85.18'	98.11'	N04°12'15"W
37	25.00'	49°40'47"	21.68'	11.57'	21.00'	S25°47'45"W
38	25.00'	49°40'47"	21.68'	11.57'	21.00'	S65°43'50"W
39	60.00'	279°21'34"	292.54'	-50.92'	77.65'	S00°34'14"W
40	25.00'	49°40'47"	21.68'	11.57'	21.00'	S64°35'22"E
41	200.00'	04°23'21"	15.32'	7.66'	15.32'	N01°42'18"W
42	230.00'	04°23'21"	17.62'	8.81'	17.62'	N01°42'18"W
43	260.00'	04°23'21"	19.92'	9.96'	19.91'	N01°42'18"W

NOTICE:
 THIS PLAT AS RECORDED IN ITS GRAPHICAL FORM, IS THE OFFICIAL DEPICTION OF THE SUBDIVIDED LANDS
 DESCRIBED HEREIN AND WILL IN NO CIRCUMSTANCES BE SUPPLANTED IN AUTHORITY BY OTHER GRAPHICAL
 OR DIGITAL FORM OF THE PLAT. THERE MAY BE ADDITIONAL RESTRICTIONS THAT ARE NOT RECORDED ON
 THIS PLAT THAT MAY BE FOUND IN THE PUBLIC RECORDS OF THIS COUNTY.

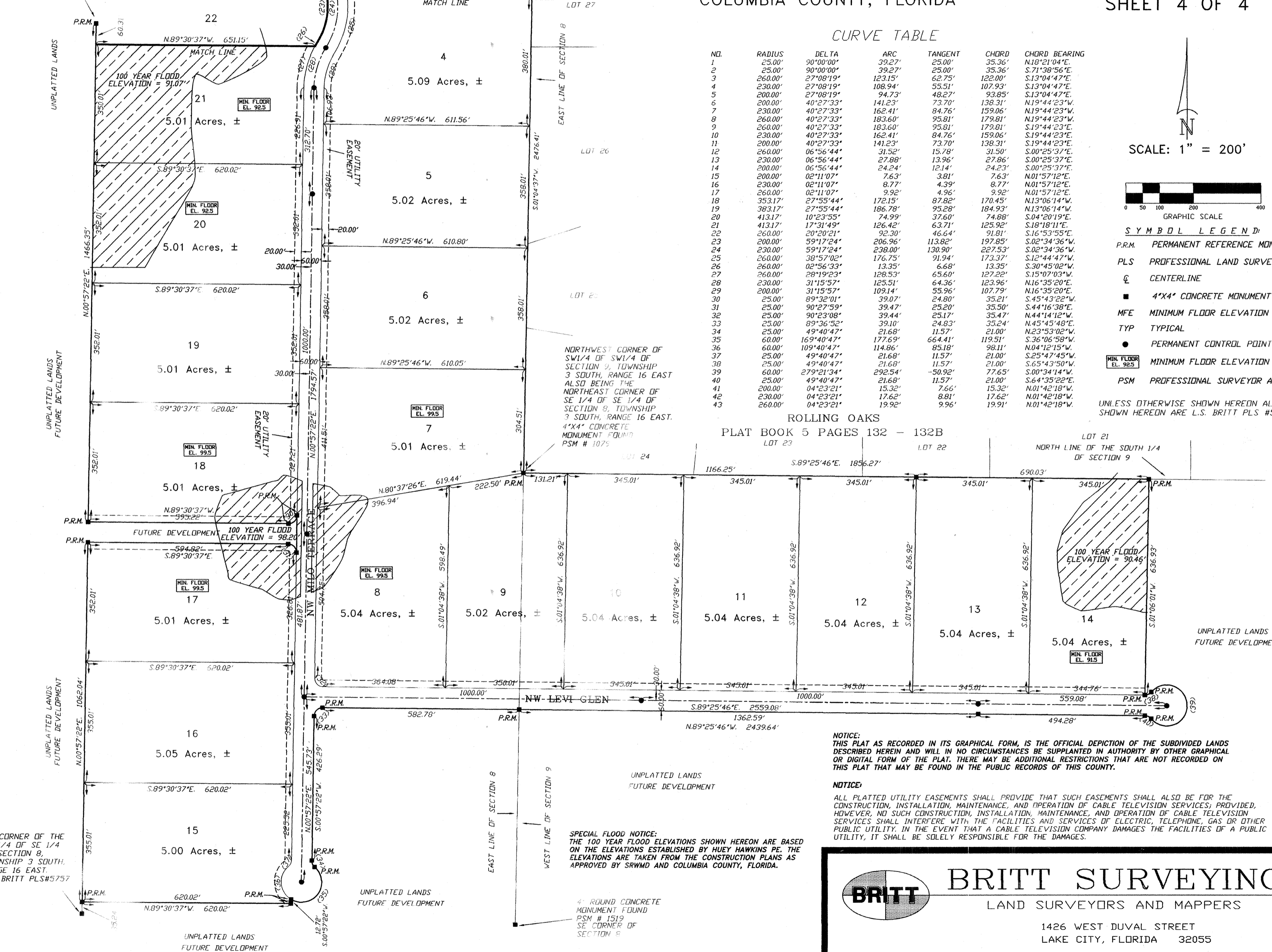
NOTICE:
 ALL PLATTED UTILITY EASEMENTS SHALL PROVIDE THAT SUCH EASEMENTS SHALL ALSO BE FOR THE
 CONSTRUCTION, INSTALLATION, MAINTENANCE, AND OPERATION OF CABLE TELEVISION SERVICES; PROVIDED,
 HOWEVER, NO SUCH CONSTRUCTION, INSTALLATION, MAINTENANCE, AND OPERATION OF CABLE TELEVISION
 SERVICES SHALL INTERFERE WITH THE FACILITIES AND SERVICES OF ELECTRIC, TELEPHONE, GAS OR OTHER
 PUBLIC UTILITY. IN THE EVENT THAT A CABLE TELEVISION COMPANY DAMAGES THE FACILITIES OF A PUBLIC
 UTILITY, IT SHALL BE SOLELY RESPONSIBLE FOR THE DAMAGES.

BRITT SURVEYING
 LAND SURVEYORS AND MAPPERS
 1426 WEST DUVAL STREET
 LAKE CITY, FLORIDA 32055
 TELEPHONE: (386) 752-7163 FAX: (386) 752-5573 WORK ORDER # L-15283

"HILLS OF HUNTSVILLE"
 SECTIONS 8 AND 9, TOWNSHIP 3 SOUTH, RANGE 16 EAST, PAGES 129
 COLUMBIA COUNTY, FLORIDA
 PLAT BOOK 8
 SHEET 4 OF 4

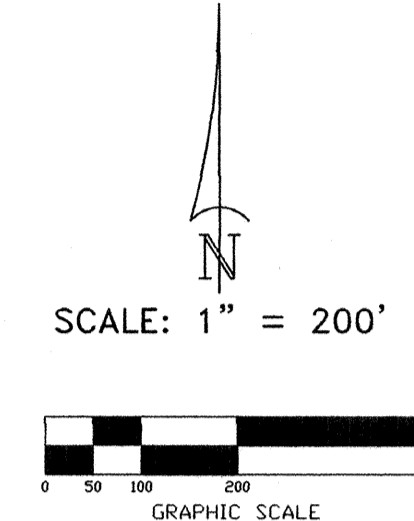
OFFICIAL RECORDS
 BOOK PAGE
1101/1548

SW CORNER OF THE
 SE 1/4 OF NE 1/4
 OF SECTION 8,
 TOWNSHIP 3 SOUTH,
 RANGE 16 EAST



CURVE TABLE

NO.	RADIUS	DELTA	ARC	TANGENT	CHORD	CHORD BEARING
1	25.00'	90°00'00"	39.27'	25.00'	35.36'	N18°21'04"E
2	25.00'	90°00'00"	39.27'	25.00'	35.36'	S71°38'56"E
3	260.00'	27°08'19"	123.15'	62.75'	122.00'	S13°04'47"E
4	230.00'	27°08'19"	108.94'	55.51'	107.93'	S13°04'47"E
5	200.00'	27°08'19"	94.73'	48.27'	93.85'	S13°04'47"E
6	200.00'	40°27'33"	141.23'	73.70'	138.31'	N19°44'23"W
7	230.00'	40°27'33"	162.41'	84.76'	159.06'	N19°44'23"W
8	260.00'	40°27'33"	183.60'	95.81'	179.81'	N19°44'23"W
9	260.00'	40°27'33"	183.60'	95.81'	179.81'	S19°44'23"E
10	230.00'	40°27'33"	162.41'	84.76'	159.06'	S19°44'23"E
11	200.00'	40°27'33"	141.23'	73.70'	138.31'	S19°44'23"E
12	260.00'	06°56'44"	31.52'	15.78'	31.50'	S00°25'37"E
13	230.00'	06°56'44"	27.88'	13.96'	27.86'	S00°25'37"E
14	200.00'	06°56'44"	24.24'	12.14'	24.23'	S00°25'37"E
15	200.00'	02°11'07"	7.63'	3.81'	7.63'	N01°57'12"E
16	230.00'	02°11'07"	8.77'	4.39'	8.77'	N01°57'12"E
17	260.00'	02°11'07"	9.92'	4.96'	9.92'	N01°57'12"E
18	353.17'	27°55'44"	172.15'	87.82'	170.45'	N13°06'14"W
19	383.17'	27°55'44"	186.78'	95.28'	184.93'	N13°06'14"W
20	413.17'	10°23'55"	74.99'	37.60'	74.88'	S04°20'19"E
21	413.17'	17°31'49"	126.42'	63.71'	125.92'	S18°18'11"E
22	260.00'	20°20'21"	92.30'	46.64'	91.81'	S16°53'55"E
23	200.00'	59°17'24"	206.96'	113.82'	197.85'	S02°34'36"W
24	230.00'	59°17'24"	238.00'	130.90'	227.53'	S02°34'36"W
25	260.00'	38°57'02"	176.75'	91.94'	173.37'	S12°44'47"W
26	260.00'	02°56'33"	13.35'	6.68'	13.35'	S30°45'02"W
27	260.00'	28°19'23"	128.53'	65.60'	127.22'	S15°07'03"W
28	230.00'	31°15'57"	125.51'	64.36'	123.96'	N16°35'20"E
29	200.00'	31°15'57"	109.14'	55.96'	107.79'	N16°35'20"E
30	25.00'	89°32'01"	39.07'	24.80'	35.21'	S45°43'22"W
31	25.00'	90°27'59"	39.47'	25.20'	35.50'	S44°16'38"E
32	25.00'	90°23'08"	39.44'	25.17'	35.47'	N44°14'12"W
33	25.00'	89°36'52"	39.10'	24.83'	35.24'	N45°45'48"E
34	25.00'	49°40'47"	21.68'	11.57'	21.00'	N23°53'02"W
35	60.00'	169°40'47"	177.69'	66.44'	119.51'	S36°06'58"W
36	60.00'	109°40'47"	114.86'	58.18'	98.11'	N04°12'15"W
37	25.00'	49°40'47"	21.68'	11.57'	21.00'	S25°47'45"W
38	25.00'	49°40'47"	21.68'	11.57'	21.00'	S65°43'50"W
39	60.00'	279°21'34"	292.54'	-50.92'	77.65'	S00°31'14"W
40	25.00'	49°40'47"	21.68'	11.57'	21.00'	S64°35'22"E
41	200.00'	04°23'21"	15.32'	7.66'	15.32'	N01°42'18"W
42	230.00'	04°23'21"	17.62'	8.81'	17.62'	N01°42'18"W
43	260.00'	04°23'21"	19.92'	9.96'	19.91'	N01°42'18"W



SYMBOL LEGEND:

- P.R.M. PERMANENT REFERENCE MONUMENT
- PLS PROFESSIONAL LAND SURVEYOR
- CL CENTERLINE
- 4"X4" CONCRETE MONUMENT
- MFE MINIMUM FLOOR ELEVATION
- TYP TYPICAL
- PERMANENT CONTROL POINT
- MIN. FLOOR EL. 925 MINIMUM FLOOR ELEVATION
- PSM PROFESSIONAL SURVEYOR AND MAPPER

UNLESS OTHERWISE SHOWN HEREON ALL CORNERS SHOWN HEREON ARE L.S. BRITT PLS #5757

ROLLING OAKS
 PLAT BOOK 5 PAGES 132 - 132B

NOTICE:
 THIS PLAT AS RECORDED IN ITS GRAPHICAL FORM, IS THE OFFICIAL DEPICTION OF THE SUBDIVIDED LANDS DESCRIBED HEREIN AND WILL IN NO CIRCUMSTANCES BE SUPPLANTED IN AUTHORITY BY OTHER GRAPHICAL OR DIGITAL FORM OF THE PLAT. THERE MAY BE ADDITIONAL RESTRICTIONS THAT ARE NOT RECORDED ON THIS PLAT THAT MAY BE FOUND IN THE PUBLIC RECORDS OF THIS COUNTY.

NOTICE:
 ALL PLATTED UTILITY EASEMENTS SHALL PROVIDE THAT SUCH EASEMENTS SHALL ALSO BE FOR THE CONSTRUCTION, INSTALLATION, MAINTENANCE, AND OPERATION OF CABLE TELEVISION SERVICES; PROVIDED, HOWEVER, NO SUCH CONSTRUCTION, INSTALLATION, MAINTENANCE, AND OPERATION OF CABLE TELEVISION SERVICES SHALL INTERFERE WITH THE FACILITIES AND SERVICES OF ELECTRIC, TELEPHONE, GAS OR OTHER PUBLIC UTILITY. IN THE EVENT THAT A CABLE TELEVISION COMPANY DAMAGES THE FACILITIES OF A PUBLIC UTILITY, IT SHALL BE SOLELY RESPONSIBLE FOR THE DAMAGES.

SPECIAL FLOOD NOTICE:
 THE 100 YEAR FLOOD ELEVATIONS SHOWN HEREON ARE BASED ON THE ELEVATIONS ESTABLISHED BY HUEY HAWKINS PE. THE ELEVATIONS ARE TAKEN FROM THE CONSTRUCTION PLANS AS APPROVED BY SRWMD AND COLUMBIA COUNTY, FLORIDA.

BRITT SURVEYING
 LAND SURVEYORS AND MAPPERS

1426 WEST DUVAL STREET
 LAKE CITY, FLORIDA 32055

TELEPHONE: (386) 752-7163 FAX: (386) 752-5573 WORK ORDER # L-15283

“ HILLS OF HUNTSVILLE ”
FOR 2007

PARENT PARCEL – 08-3S-16-02032-001 – 146.25 AC. – 107.25 AC. = 39.00 AC.
09-3S-16-02051-003 – 67.67 AC. – 30.25 AC. = 37.42 AC.

HEADER PAECEL – 08-3S-16-02032-100 – A S/D LYING IN THE E1/4 OF SEC 08-3S-16 & ALSO LYING IN THE N1/2 OF THE S1/2 OF THE SW1/4 OF SEC 09-3S-16 CONTAINING 136.65 AC. RECORDED IN PLAT BOOK 8 PAGES 126 THRU 129.

LOT 1	08-3S-16-02032-101	5.04 AC.
LOT 2	08-3S-16-02032-102	5.03 AC.
LOT 3	08-3S-16-02032-103	5.04 AC.
LOT 4	08-3S-16-02032-104	5.09 AC.
LOT 5	08-3S-16-02032-105	5.02 AC.
LOT 6	08-3S-16-02032-106	5.02 AC.
LOT 7	08-3S-16-02032-107	5.01 AC.
LOT 8	08-3S-16-02032-108	5.04 AC.
LOT 9	08-3S-16-02032-109	5.02 AC.
LOT 10	09-3S-16-02032-110	5.04 AC.
LOT 11	09-3S-16-02032-111	5.04 AC.
LOT 12	09-3S-16-02032-112	5.04 AC.
LOT 13	09-3S-16-02032-113	5.04 AC.
LOT 14	09-3S-16-02032-114	5.04 AC.
LOT 15	08-3S-16-02032-115	5.00 AC.
LOT 16	08-3S-16-02032-116	5.05 AC.
LOT 17	08-3S-16-02032-117	5.01 AC.
LOT 18	08-3S-16-02032-118	5.01 AC.
LOT 19	08-3S-16-02032-119	5.01 AC.
LOT 20	08-3S-16-02032-120	5.01 AC.
LOT 21	08-3S-16-02032-121	5.01 AC.
LOT 22	08-3S-16-02032-122	5.00 AC.
LOT 23	08-3S-16-02032-123	5.00 AC.
LOT 24	08-3S-16-02032-124	5.00 AC.
LOT 25	08-3S-16-02032-125	5.36 AC.