

# KING'S WOOD

A SUBDIVISION OF A PART OF THE NW $\frac{1}{4}$  OF THE NW $\frac{1}{4}$ , SECTION 35, TOWNSHIP 4-S, RANGE 16-E  
COLUMBIA COUNTY, FLORIDA

## SURVEYOR'S CERTIFICATE

I HEREBY CERTIFY THAT ON THIS 27<sup>th</sup> DAY OF October, 1974, A.D., THE LANDS DESCRIBED ON SHEET NO. 1 OF 2 WERE SURVEYED UNDER MY DIRECTION AND THAT PERMANENT REFERENCE MONUMENTS AND PERMANENT CONTROL POINTS WERE PLACED AS SHOWN ON SHEET NO. 1 OF 2 IN ACCORDANCE WITH THE STATUTES OF THE STATE OF FLORIDA PERTAINING TO MAPS AND PLATS AND THAT THIS PLAT IS A TRUE AND CORRECT PLAT OF THE LANDS THEREON SHOWN.

SIGNED W.C. Hale  
W.C. HALE, LAND SURVEYOR  
FLORIDA CERTIFICATE NO. 1519

## APPROVED BY BOARD OF COUNTY COMMISSIONERS

COLUMBIA COUNTY, FLORIDA

SIGNED \_\_\_\_\_ CHAIRMAN

ATTEST \_\_\_\_\_ CLERK

DATE \_\_\_\_\_

## CERTIFICATE OF CLERK

FILE NO. 77-533 P

I HEREBY CERTIFY THAT I HAVE EXAMINED THE FOREGOING PLAT AND THAT IT COMPLIES IN FORM WITH CHAPTER 177, FLORIDA STATUTES AND WAS FILED, FOR RECORD ON THIS 28<sup>th</sup> DAY OF July, 1974, A.D., IN PLAT BOOK 4 PAGE 50-5017 OF THE PUBLIC RECORDS OF COLUMBIA COUNTY, FLORIDA.

SIGNED \_\_\_\_\_  
CLERK OF CIRCUIT COURT  
COLUMBIA COUNTY, FLORIDA



# KING'S WOOD

A SUBDIVISION OF A PART OF THE NW<sup>1</sup>/<sub>4</sub> OF THE NW<sup>1</sup>/<sub>4</sub>, SECTION 35, TOWNSHIP 4-S, RANGE 16-E  
COLUMBIA COUNTY, FLORIDA

## DESCRIPTION

COMMENCE AT THE NORTHWEST CORNER OF SECTION 35, TOWNSHIP 4-SOUTH, RANGE 16-EAST AND RUN THENCE S. 8° 52' W., ALONG THE WEST LINE OF SAID SECTION, 846.00 FEET TO THE POINT-OF-BEGINNING, AND RUN THENCE N. 89° 25' 40" E., 715.28 FEET, THENCE N. 8° 52' E., 371.75 FEET, THENCE S. 89° 25' 40" W., 324.71 FEET, THENCE N. 8° 52' E., 48.25 FEET, THENCE N. 89° 25' 40" E., 18.43 FEET, THENCE N. 8° 52' E., 101.75 FEET, THENCE N. 89° 25' 40" E., 934.09 FEET, TO THE EAST LINE OF THE NW<sup>1</sup>/<sub>4</sub> OF NW<sup>1</sup>/<sub>4</sub> OF SAID SECTION, THENCE S. 8° 55' 20" W., ALONG SAID EAST LINE, 968.89 FEET, TO THE SOUTHEAST CORNER OF THE NW<sup>1</sup>/<sub>4</sub> OF NW<sup>1</sup>/<sub>4</sub> OF SAID SECTION, THENCE S. 89° 33' 45" W., ALONG THE SOUTH LINE OF THE NW<sup>1</sup>/<sub>4</sub> OF NW<sup>1</sup>/<sub>4</sub> OF SAID SECTION, 1031.44 FEET, THENCE N. 8° 52' E., 382.18 FEET, THENCE S. 89° 25' 40" W., 310.00 FEET, TO THE WEST LINE OF SAID SECTION, THENCE N. 8° 52' E., 60.82 FEET, TO THE POINT-OF-BEGINNING.

## DEDICATION

KNOW ALL MEN BY THESE PRESENT THAT JIM L. M<sup>C</sup>GLAMERY AND BARBARA A. M<sup>C</sup>GLAMERY, HIS WIFE, AS OWNERS, AND GERALD R. SIMS AND BERTHA SIMS, AS MORTGAGEES, HAVE CAUSED THE LANDS HEREON DESCRIBED TO BE SURVEYED, LAID OUT, SUBDIVIDED AND PLATTED TO BE KNOWN AS "KING'S WOOD", AND THAT THE ROADS AND EASEMENTS AS SHOWN ARE HEREBY DEDICATED TO THE PUBLIC.

SIGNED Jim L. McGlamery WITNESS Carol Ann Nelson  
JIM L. M<sup>C</sup>GLAMERY, OWNER

SIGNED Barbara A. McGlamery WITNESS Aunshine C. Graves  
BARBARA A. M<sup>C</sup>GLAMERY, OWNER

DATE 2-9-77

SIGNED Gerald R. Sims WITNESS Carol Ann Nelson  
GERALD R. SIMS, MORTGAGEE

SIGNED Bertha Sims WITNESS Aunshine C. Graves  
BERTHA SIMS, MORTGAGEE

DATE 2-9-77

## ACKNOWLEDGEMENT

STATE OF FLORIDA  
COUNTY OF COLUMBIA

ON THIS 9<sup>th</sup> DAY OF February, 1977, A.D., THE FOREGOING INSTRUMENT WAS ACKNOWLEDGED BEFORE ME BY JIM L. M<sup>C</sup>GLAMERY AND HIS WIFE, BARBARA A. M<sup>C</sup>GLAMERY. I FURTHER CERTIFY THAT THE SAID BARBARA A. M<sup>C</sup>GLAMERY, UPON A SEPARATE AND PRIVATE EXAMINATION TAKEN AND MADE BY AND BEFORE ME, THEN AND THERE ACKNOWLEDGED THAT SHE EXECUTED THE FOREGOING INSTRUMENT FREELY AND VOLUNTARILY AND WITHOUT ANY CONSTRAINT, APPREHENSION, FEAR OR COMPLUSION OF OR FROM HER SAID HUSBAND.

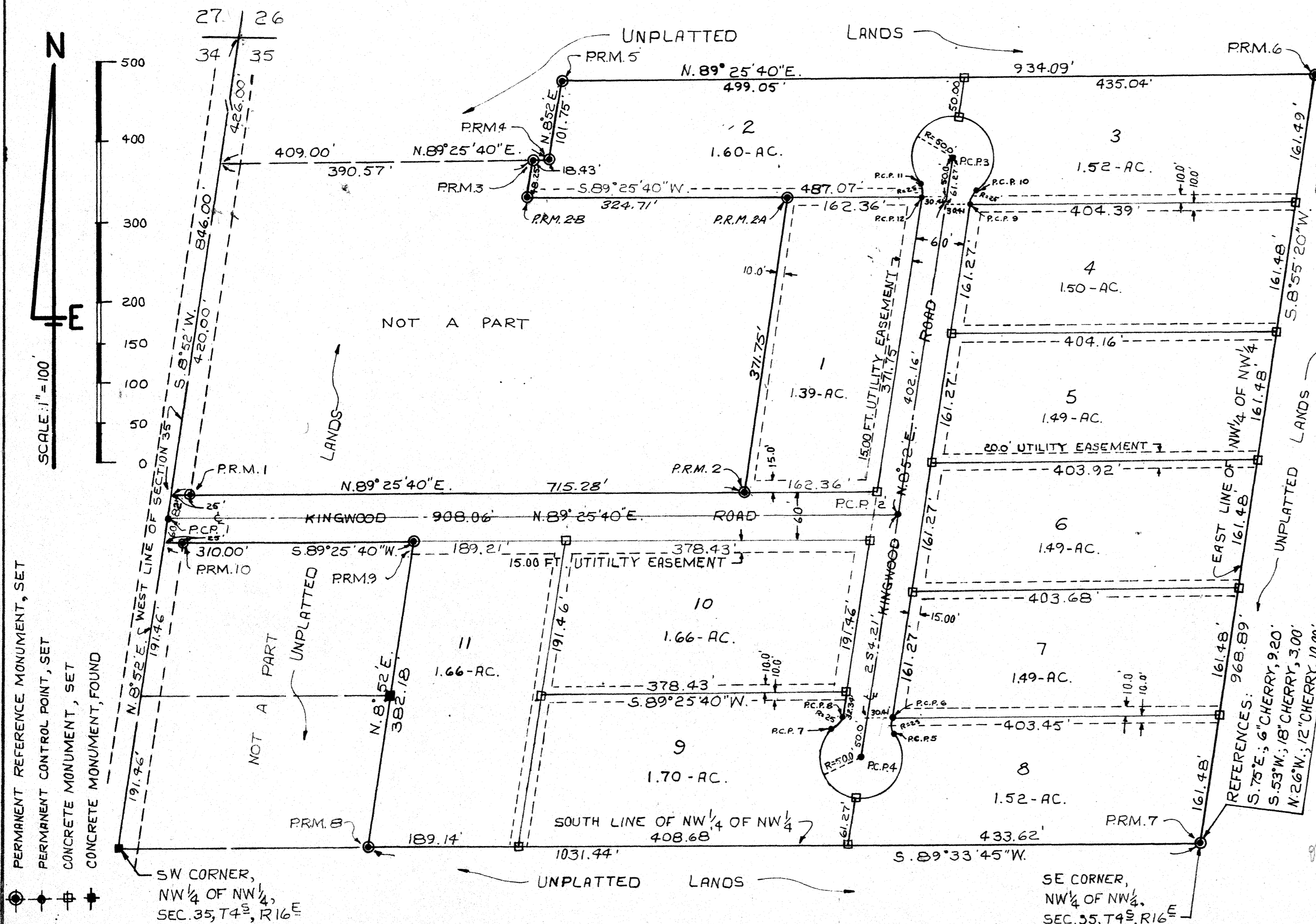
SIGNED Carol Ann Nelson  
NOTARY PUBLIC, STATE OF FLORIDA  
MY COMMISSION EXPIRES

## ACKNOWLEDGEMENT

STATE OF FLORIDA  
COUNTY OF COLUMBIA

ON THIS 9<sup>th</sup> DAY OF February, 1977, A.D., THE FOREGOING INSTRUMENT WAS ACKNOWLEDGED BEFORE ME BY GERALD R. SIMS AND BERTHA SIMS.

SIGNED Carol Ann Nelson  
NOTARY PUBLIC, STATE OF FLORIDA  
MY COMMISSION EXPIRES



- PERMANENT REFERENCE MONUMENT, SET
- PERMANENT CONTROL POINT, SET
- CONCRETE MONUMENT, SET
- CONCRETE MONUMENT, FOUND

SW CORNER, NW<sup>1</sup>/<sub>4</sub> OF NW<sup>1</sup>/<sub>4</sub>, SEC. 35, T4S, R16E

SE CORNER, NW<sup>1</sup>/<sub>4</sub> OF NW<sup>1</sup>/<sub>4</sub>, SEC. 35, T4S, R16E

*on Book  
02240992  
02292.011*

*Approved as to form  
Carol Ann Nelson  
Notary Public  
July 21, 1977*