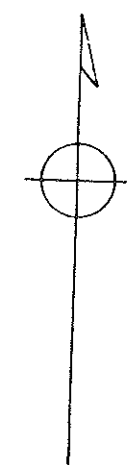
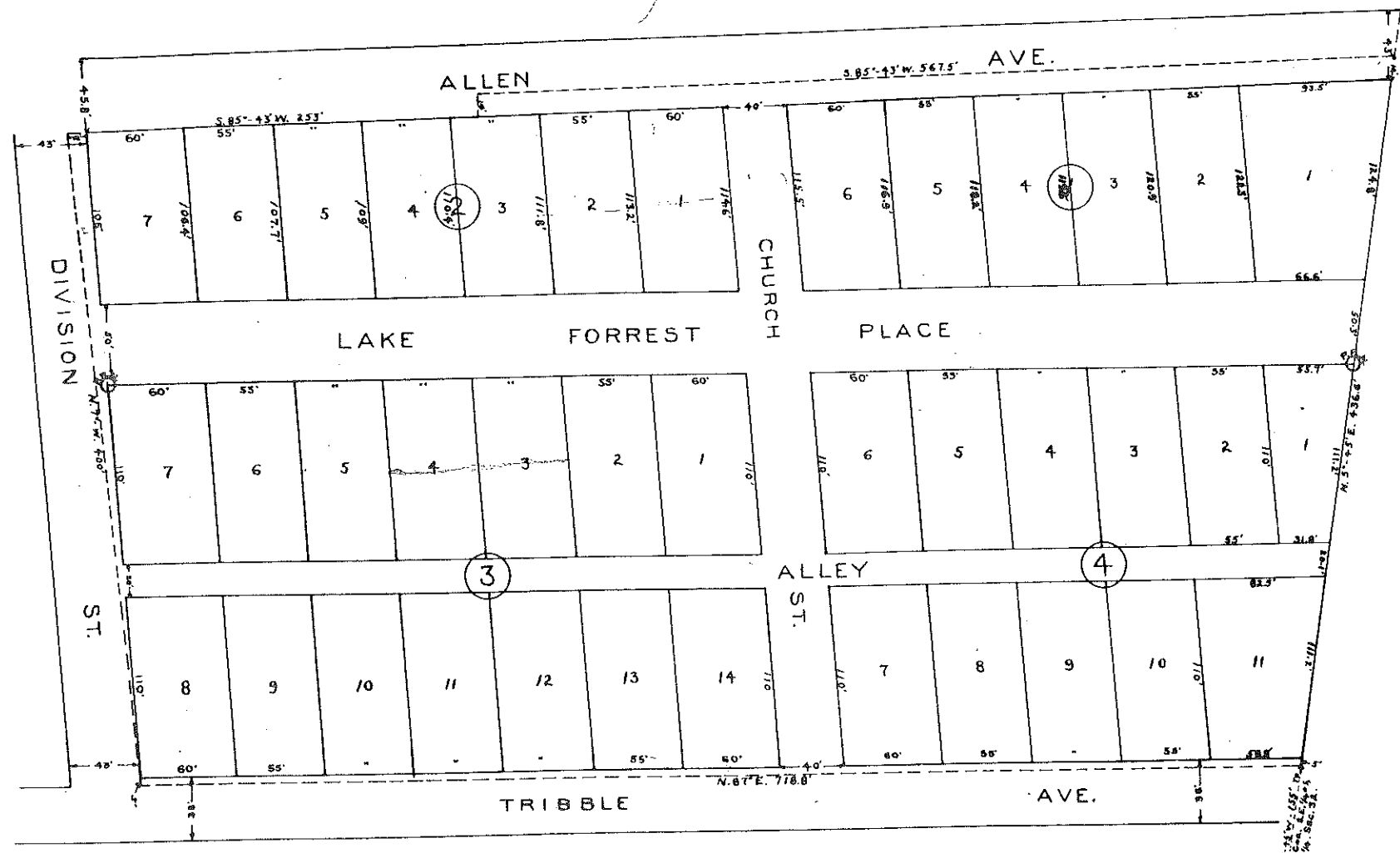


# LAKE FORREST PARK

A SUBDIVISION OF THE FOLLOWING DESCRIBED TRACT OF LAND;  
 BEGIN AT A POINT 155 FEET N. 5° 45' EAST OF THE S.W. CORNER OF THE S.E. 1/4  
 OF THE S.E. 1/4, SECTION 32, TOWNSHIP 3, SOUTH, RANGE 17 EAST, AND RUN N.  
 5° 45' E. 436.6 FEET, THENCE S. 85° 43' W. 567.5 FEET, THENCE S. 14 FEET, THEN  
 S. 85° 43' W. 253 FEET, THENCE S. 7° E. 400 FEET, THENCE N. 87° E. 718.8 FEET,  
 TO THE POINT OF BEGINNING, BEING IN THE SOUTHERN DIVISION OF LAKE CITY,  
 COLUMBIA COUNTY, FLORIDA.



SCALE 1 INCH = 40 FEET  
 LEGEND  
 P.R.M. = PERMANENT REFERENCE MONUMENT.

Dedication:  
 Know all men by these presents, that D. J. Eutch  
 and Dorris Eutch, his wife, owners, have caused the lands embraced  
 on this plat to be surveyed, laid out and platted to be known as  
 "Lake Forrest Park" and that the streets as shown on said plat  
 are hereby dedicated to the use of the Public.  
 Witness:

We certify that we are competent surveyors and that we made the  
 survey and plat hereon delineated and that this plat is a correct  
 representation of the land platted and that permanent reference monuments  
 have been placed as required by law.  
 Witness: *W. W. K. K. K.*