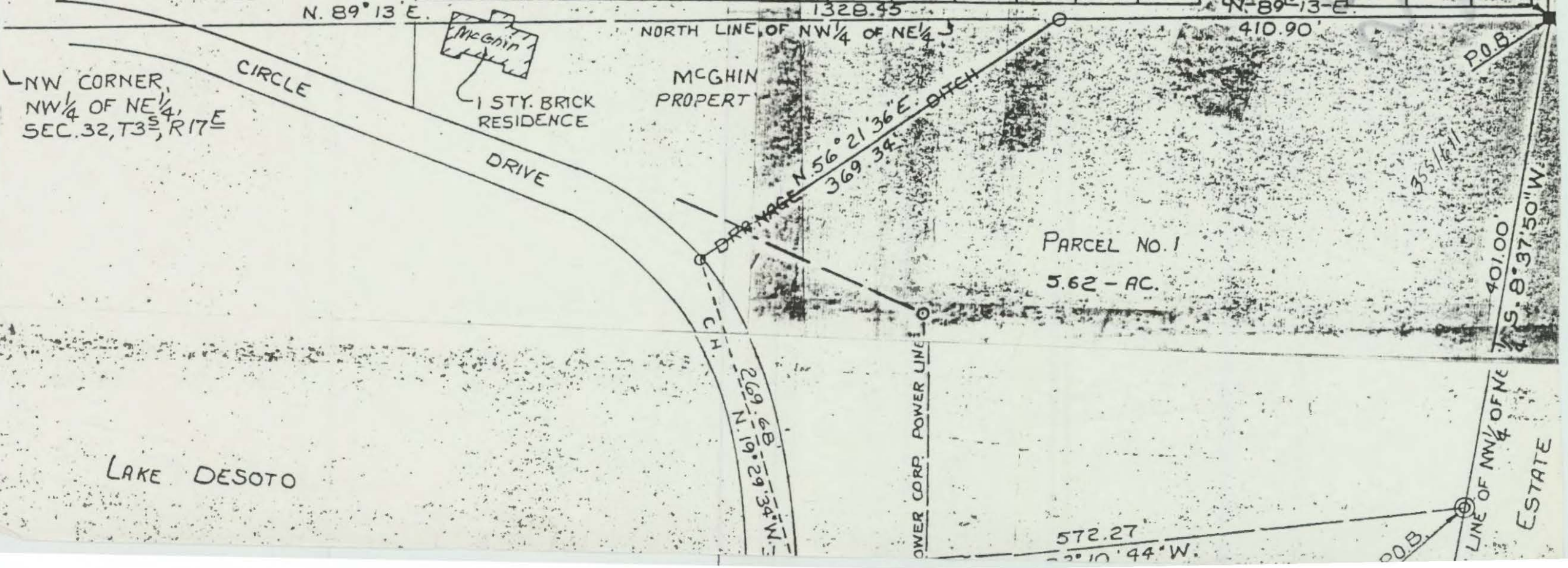
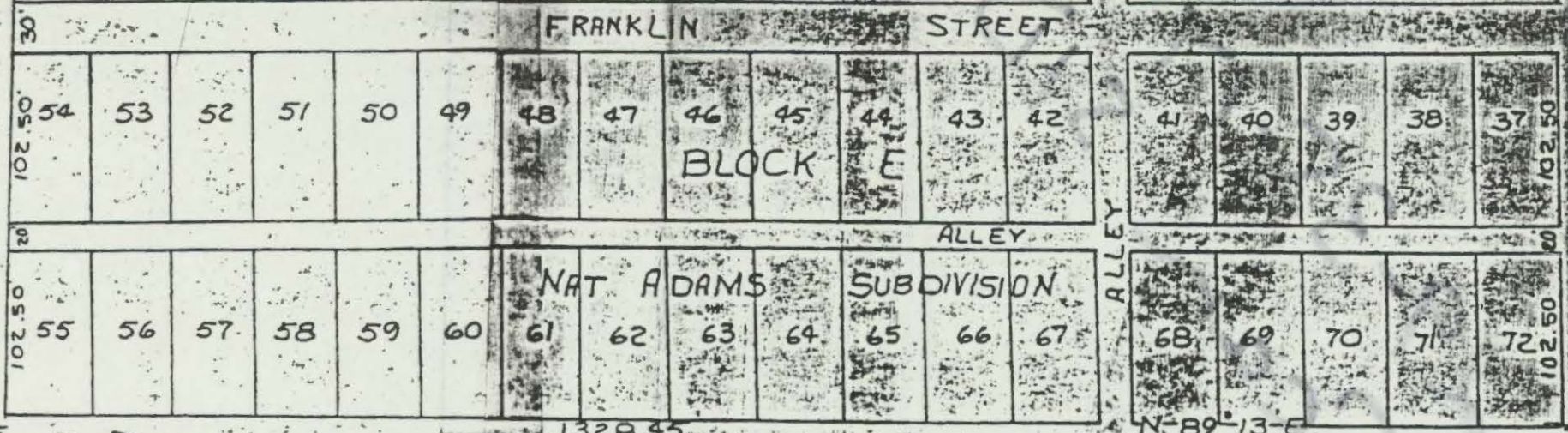


SHOWN IS A TRUE AND CORRECT PLAN OF SURVEY MADE UNDER MY DIRECTION OF THE LANDS DESCRIBED ON SHEET NO. 2 OF 2:

220 1/2 Leon

SIGNED W.C. Hale  
W.C. HALE, LAND SURVEYOR  
FLORIDA CERTIFICATE NO. 1519



NW CORNER, NW 1/4 OF NE 1/4, SEC. 32, T3S, R17E

LAKE DESOTO

PARCEL NO. 1  
5.62 - AC.

MCGHIN PROPERTY

1 STY. BRICK RESIDENCE

CIRCLE DRIVE

NORTH LINE OF NW 1/4 OF NE 1/4

572.27  
S. 10° 44' W.

LINE OF NW 1/4 OF NE 1/4 ESTATE





ESCAMBIA ST.

WASHINGTON ST.

LEON ST.

FRANKLIN ST.

HILLSBORO ST.

ST.

ST.

JACKSON ST.

CHURCH ST.

CIRCLE

N. 88° 58' E.

ST.

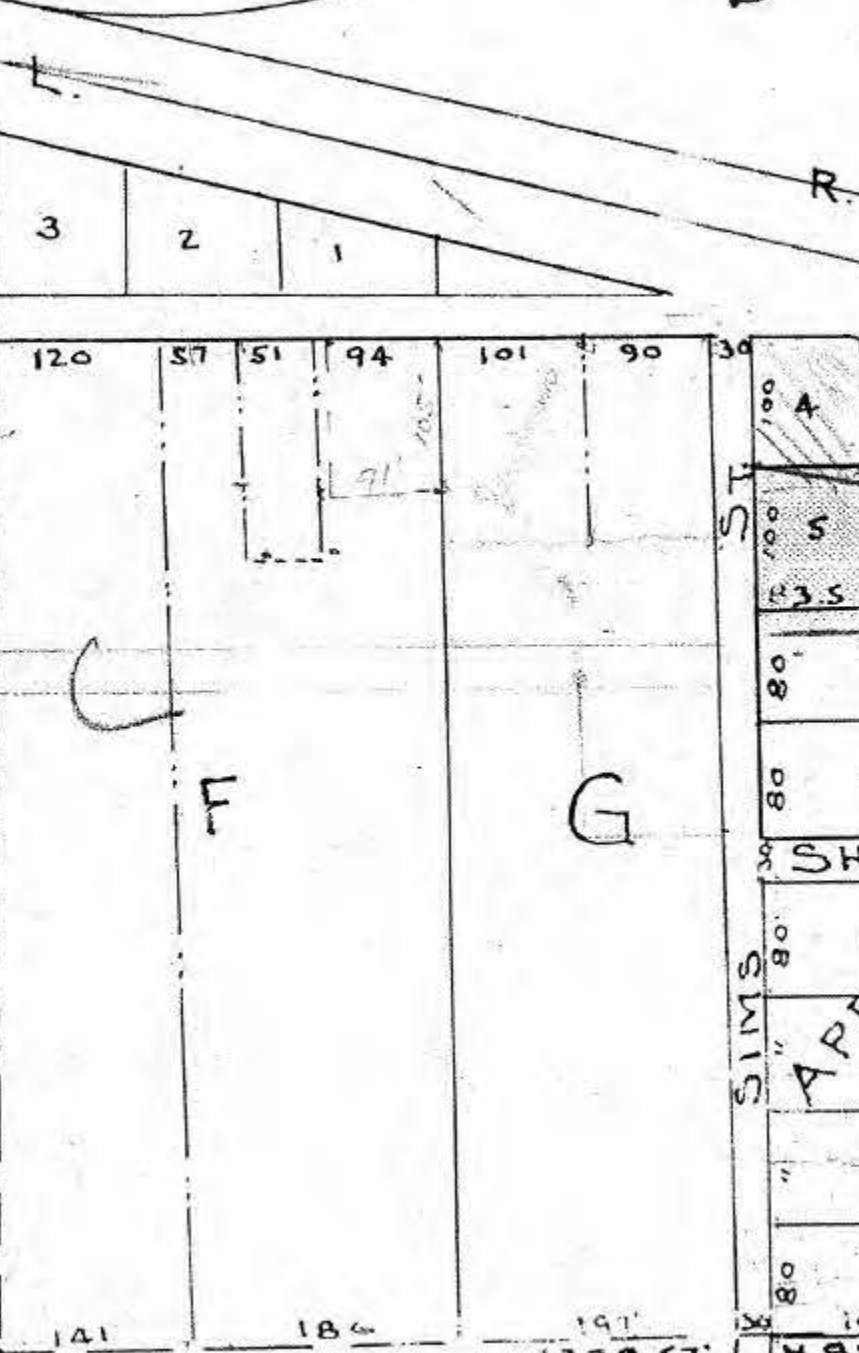
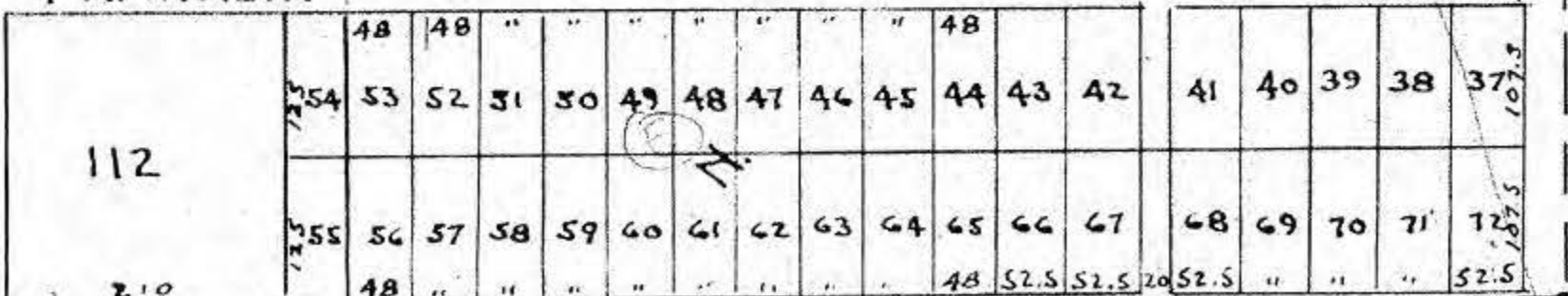
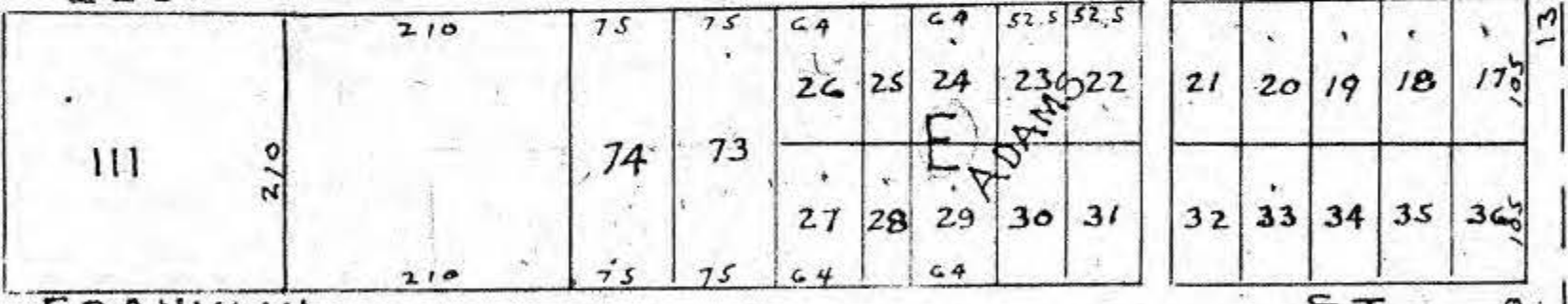
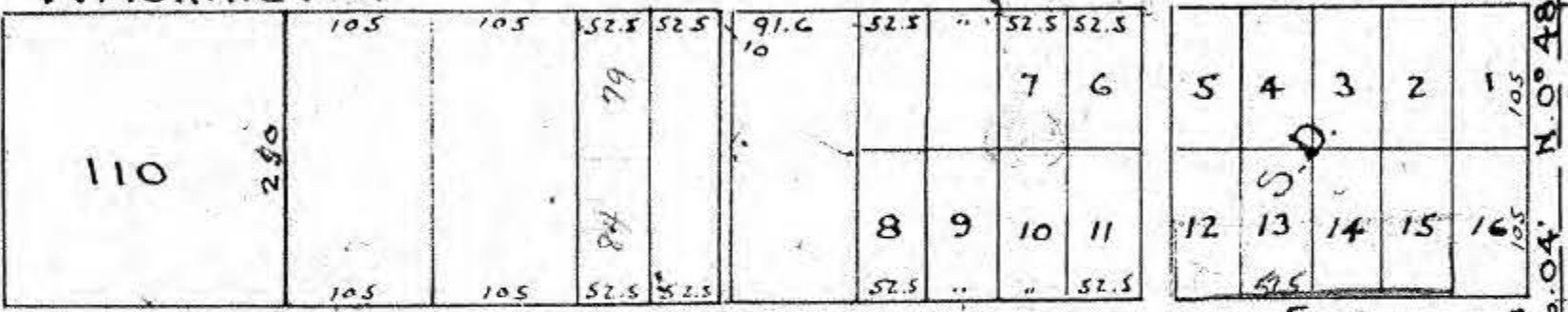
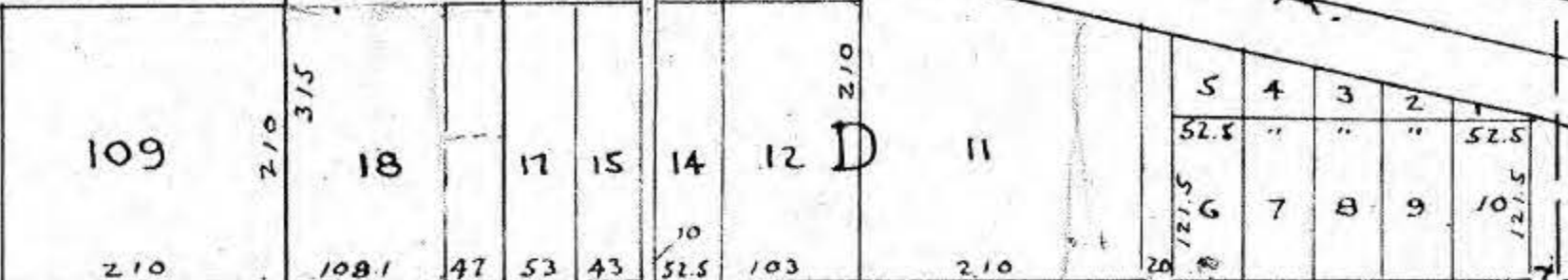
1328 ST.

N. 0° 45' W.

1310.76

N. 0° 48' W.

1316.04



ADAMS

C

F

G

SIMS

ARR

N. 88°