

**DESCRIPTION TRACT "A"**

COMMENCE AT THE NW CORNER SECTION 3 TOWNSHIP 4 SOUTH, RANGE 17 EAST AND RUN N88°18'E A DISTANCE OF 59.98 FEET TO A POINT-OF-BEGINNING; THENCE RUN N88°18'E A DISTANCE OF 247.45 FEET TO A POINT; THENCE S18°20'E A DISTANCE OF 125.24 FEET TO A POINT; THENCE S88°18'W A DISTANCE OF 302.84 FEET TO A POINT; THENCE N7°33'E A DISTANCE OF 121.58 FEET TO THE P.O.B.

**DESCRIPTION TRACT "B"**

COMMENCE AT THE NW CORNER SECTION 3 TOWNSHIP 4 SOUTH, RANGE 17 EAST AND RUN N88°18'E A DISTANCE OF 59.98 FEET; THENCE S7°33'W A DISTANCE OF 172.24 FEET TO THE POINT-OF-BEGINNING; THENCE N88°18'E A DISTANCE OF 175.93 FEET TO A POINT; THENCE S0°31'W A DISTANCE OF 100.08 FEET TO A POINT; THENCE S88°18'W A DISTANCE OF 181.79 FEET TO A POINT; THENCE N0°31'E A DISTANCE OF 52.56 FEET TO A POINT; THENCE N7°33'E A DISTANCE OF 48.11 FEET TO THE POINT-OF-BEGINNING.

# OAK HILL ESTATES REPLAT

A REPLAT OF OAK HILL ESTATES, A SUBDIVISION OF THE PART OF THE NW 1/4 OF NW 1/4 SECTION 3, T4S, R17E, COLUMBIA COUNTY, FLORIDA. AS RECORDED PLATBOOK 3 PAGE 48 PUBLIC RECORDS, COLUMBIA COUNTY, FLORIDA.

**DESCRIPTION :**

BEGIN AT THE NW CORNER SECTION 3, TOWNSHIP 4 SOUTH, RANGE 17 EAST, AND RUN N88°18'E ALONG THE NORTH LINE SECTION 3 A DISTANCE OF 1320.00 FEET TO THE NE CORNER OF NW 1/4 OF NW 1/4; THENCE S0°31'W A DISTANCE OF 1020.00 FEET TO A POINT; THENCE S88°18'W A DISTANCE OF 1320.00 FEET TO A POINT ON WEST LINE SECTION 3; THENCE N0°31'E ALONG SECTION LINE TO P.O.B. EXCEPT A PARCEL DESCRIBED AS BEGIN AT THE NE CORNER OF NW 1/4 OF NW 1/4 AND RUN S0°31'W A DISTANCE 727.50 FEET FOR A P.O.B.; THENCE S88°18'W A DISTANCE OF 714.87 FEET; THENCE S18°20'E A DISTANCE OF 305.04 FEET; THENCE N88°18'E A DISTANCE OF 616.15 FEET TO A POINT; THENCE N0°31'E A DISTANCE OF 292.50 FEET TO THE P.O.B. AND EXCEPT TRACTS "A" AND "B" AS DESCRIBED ABOVE.

**DEDICATION :**

KNOW ALL MEN BY THESE PRESENT THAT WE, BISHOP AND VIRGINIA BISHOP, HIS WIFE, AND J. E. TOMPKINS AND EVELYN D. TOMPKINS, HIS WIFE, HAVE CAUSED THE LANDS HEREON DESCRIBED TO BE SURVEYED, LAID OUT, SUBDIVIDED AND PLATTED, TO BE KNOWN AS OAK HILL ESTATES REPLAT AND DEDICATE TO THE USE OF THE PUBLIC THE STREETS SHOWN HEREON.

WITNESS Adrian Milton  
WITNESS Rosemary D. Campbell

SIGNED W. Bishop  
SIGNED Virginia H. Bishop  
SIGNED J. E. Tompkins  
SIGNED Evelyn D. Tompkins

**ACKNOWLEDGEMENT :**

STATE OF FLORIDA:  
COUNTY OF COLUMBIA  
ON THIS 21st DAY OF March 1962, PERSONALLY APPEARED BEFORE ME W.E. BISHOP AND VIRGINIA H. BISHOP, HIS WIFE AND J.E. TOMPKINS AND EVELYN D. TOMPKINS, HIS WIFE TO ME WELL KNOWN AND KNOWN TO BE THE INDIVIDUALS WHO EXECUTED THE FOREGOING DEDICATION FOR THE PURPOSES THEREIN EXPRESSED, WHEREUPON IT IS PRAYED THE SAME MAY BE RECORDED.  
WITNESS MY HAND AND OFFICIAL SEAL THIS 21st DAY OF March 1962.

NOTARY PUBLIC, MY COMMISSION EXPIRES 7

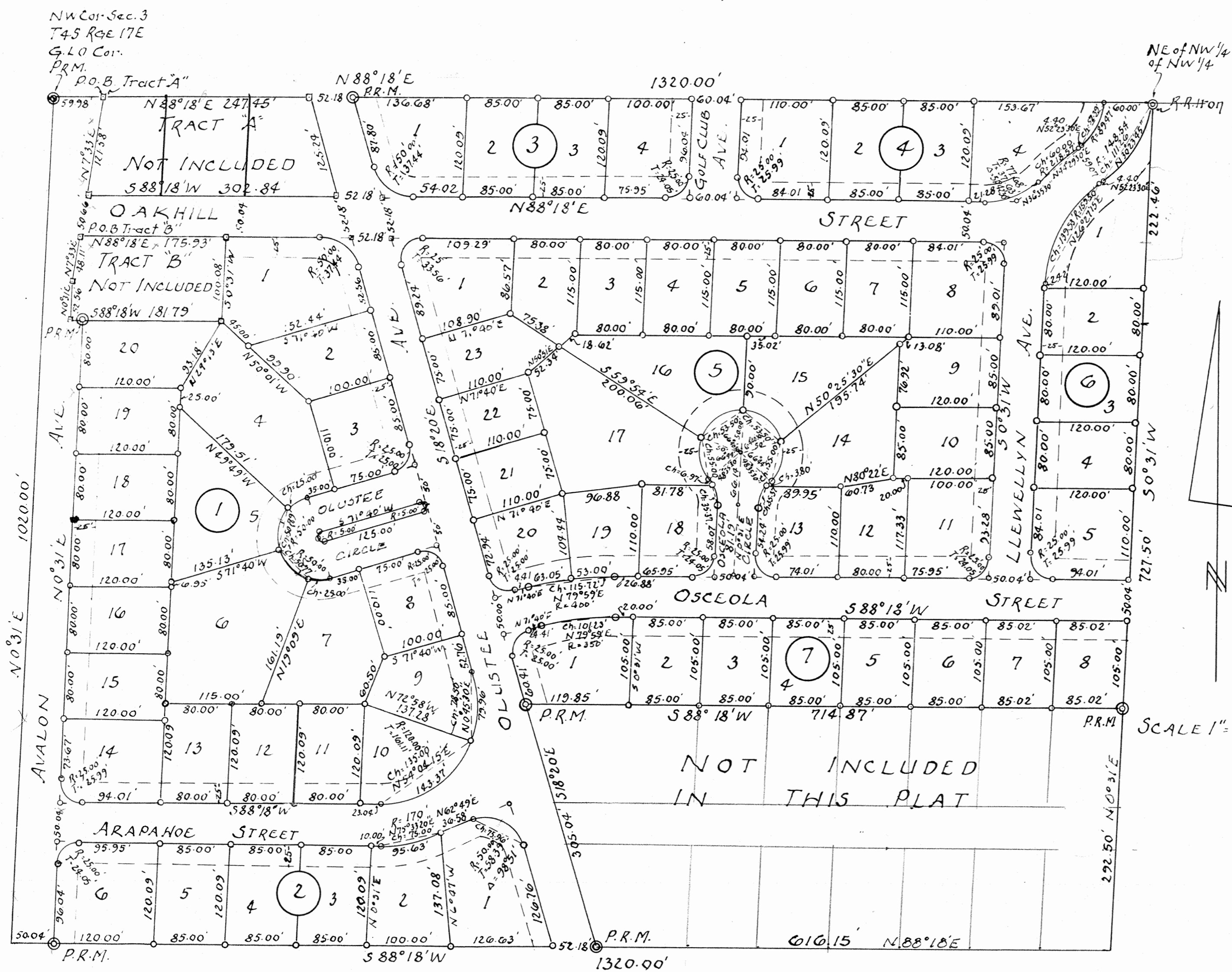
**SURVEYORS CERTIFICATE :**

I HEREBY CERTIFY THAT I AM A DULY QUALIFIED LAND SURVEYOR AND THAT THE LAND HEREON DESCRIBED HAS BEEN SURVEYED, LAID OUT AND SUBDIVIDED AS SHOWN ON THIS PLAT UNDER MY DIRECTION AND THAT P.R.M.'S AND PERMANENT LOT MARKERS HAVE BEEN SET AS REQUIRED BY LAW.

Bennett R. Wattle  
BENNETT R. WATTLE, LAND SURVEYOR  
FLORIDA CERTIFICATE NO 1443

APPROVED BY BOARD OF COUNTY COMMISSIONERS  
COLUMBIA COUNTY, FLORIDA.

SIGNED B. W. Abadie CHAIRMAN  
ATTEST J. W. Abadie CLERK  
DATE March 21, 1962



**Legend:**

- ⊙ P.R.M. 5" x 5" x 36" C.M.
- Lot Corner 1/4" x 24" Pipe
- 4" x 4" x 16" C.M.

FILE # 935

21  
March 3

Mary L. ...