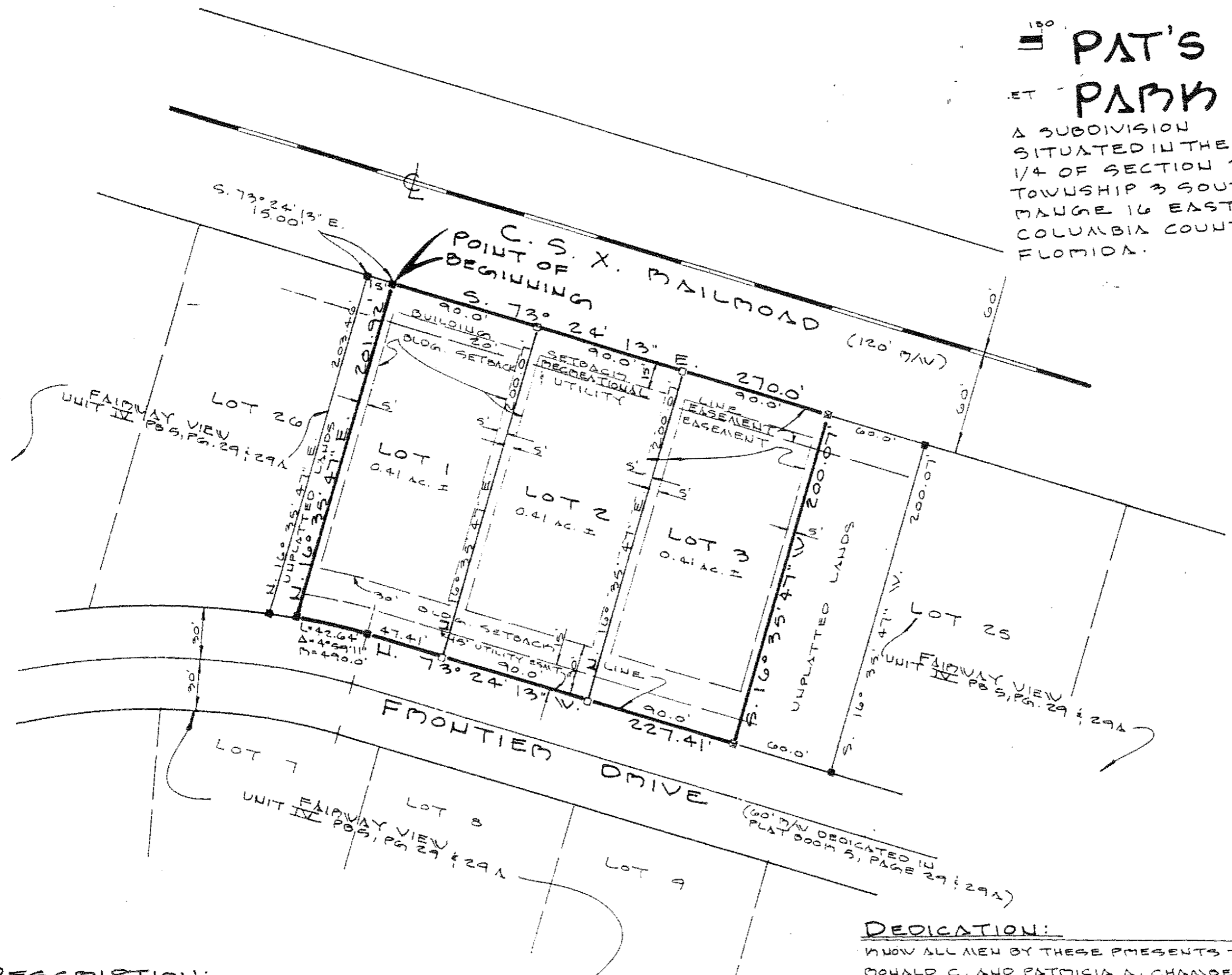




GMA
ONE INCH = 60 FEET

PAT'S PARK

A SUBDIVISION
SITUATED IN THE NW
1/4 OF SECTION 26,
TOWNSHIP 3 SOUTH,
RANGE 16 EAST,
COLUMBIA COUNTY,
FLORIDA.



DESCRIPTION:

COMMENCE AT THE NORTHEAST CORNER OF LOT NO. 26 OF

DEDICATION:

KNOW ALL MEN BY THESE PRESENTS THAT
HOWARD C. AND PATRICIA A. CHAMBERS AS
OWNERS HAVE CAUSED THE LAND SHOWN HEREON

