

**RUM ISLAND RANCHES
SECTION 2**

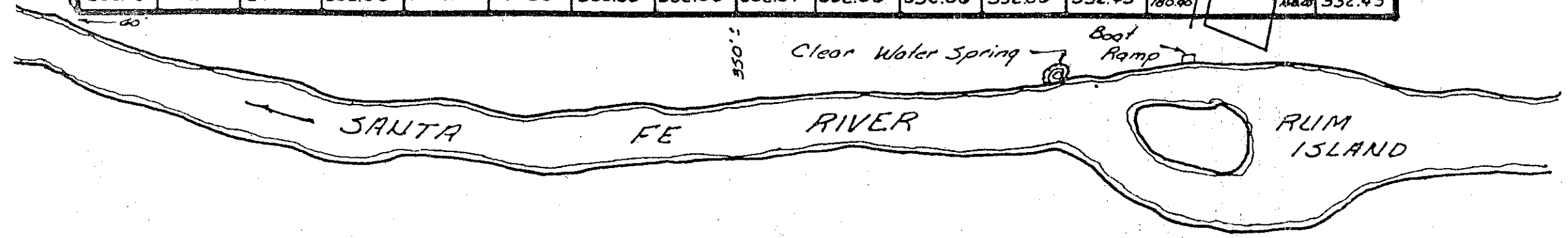
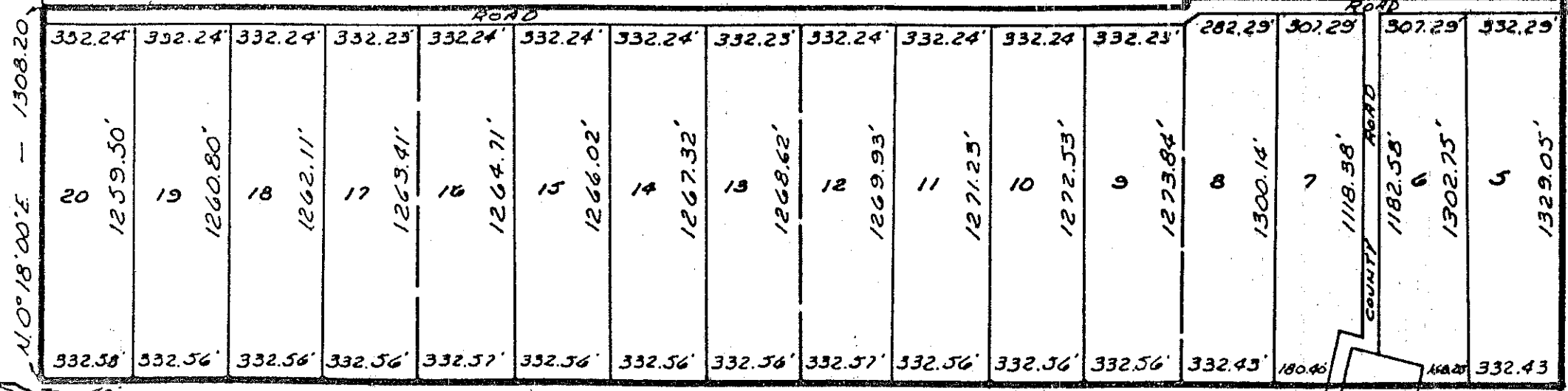
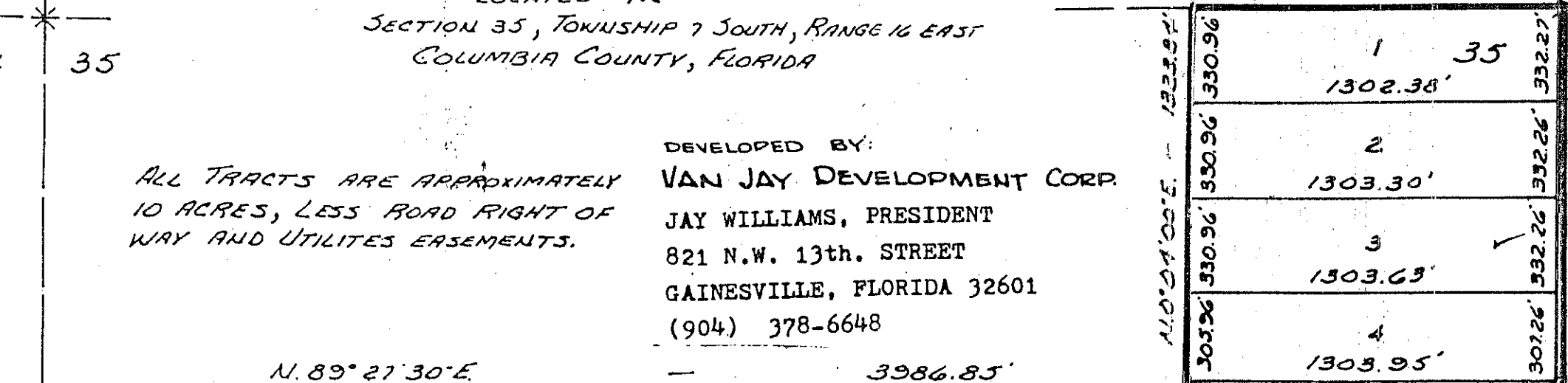
LOCATED IN
SECTION 35, TOWNSHIP 7 SOUTH, RANGE 16 EAST
COLUMBIA COUNTY, FLORIDA

DEVELOPED BY:
VAN JAY DEVELOPMENT CORP.
JAY WILLIAMS, PRESIDENT
821 N.W. 13th. STREET
GAINESVILLE, FLORIDA 32601
(904) 378-6648

ALL TRACTS ARE APPROXIMATELY
10 ACRES, LESS ROAD RIGHT OF
WAY AND UTILITES EASEMENTS.

27 26
34 35

26 25
35 36



County Road 2638.10

SCALE: 1" = 500'
Prepared By: Woffles-Lee & Asso.

**RUM ISLAND RANCHES
SECTION 2**

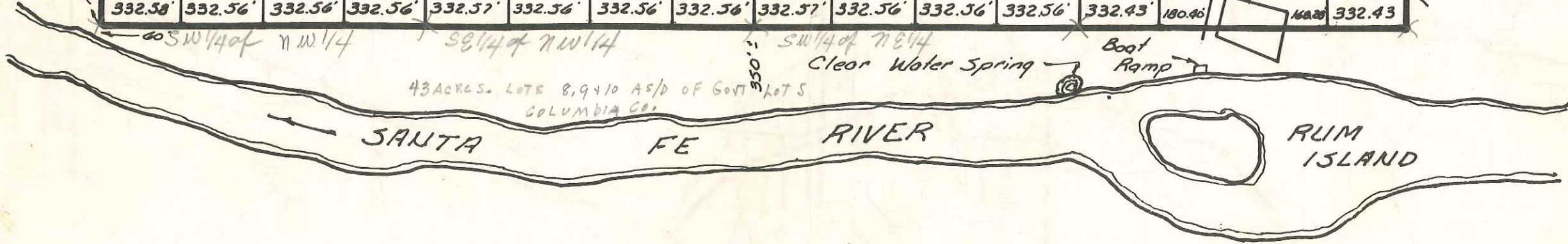
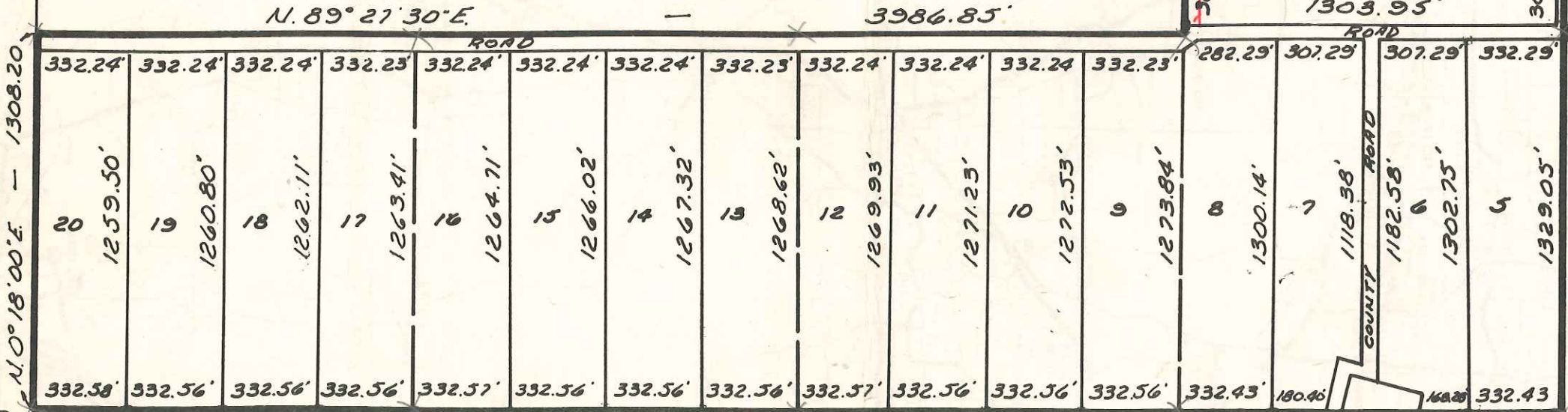
LOCATED IN
SECTION 35, TOWNSHIP 7 SOUTH, RANGE 16 EAST
COLUMBIA COUNTY, FLORIDA

ALL TRACTS ARE APPROXIMATELY
10 ACRES, LESS ROAD RIGHT OF
WAY AND UTILITIES EASEMENTS.

DEVELOPED BY:
VAN JAY DEVELOPMENT CORP.
JAY WILLIAMS, PRESIDENT
821 N.W. 13th. STREET
GAINESVILLE, FLORIDA 32601
(904) 378-6648

27 26
34 35

26 25
35 36



NE 1/4 of NW 1/4

SE 1/4 of NW 1/4

County Road 2638.10'

N. 0° 00' 30" E

N. 0° 04' 00" E - 1323.84'

SCALE: 1" = 500'
Prepared By: Woffles-Lee & Asso.

R.J.