

SHERWOOD FOREST
UNIT NO. 2
COLUMBIA COUNTY, FLORIDA

DEDICATION:

KNOWN ALL MEN BY THESE PRESENTS:

THAT JANIS BARNETT, A FREE AGENT, AS OWNER AND THE STATE EXCHANGE BANK, A FLORIDA BANKING CORPORATION AS MORTGAGEE, HAVE CAUSED THE LANDS HEREIN DESCRIBED TO BE SURVEYED, LAID OUT, SUBDIVIDED AND PLATTED, TO BE KNOWN AS SHERWOOD FOREST UNIT NO. 2, AND THAT THE ROADS AND DRIVES AS SHOWN ARE HEREBY DEDICATED TO THE PUBLIC FOR THE USES AND PURPOSES THEREON STATED.

IN WITNESS WHEREOF, JANIS BARNETT AND THE STATE EXCHANGE BANK HAVE EXECUTED AND CAUSED THESE PRESENTS TO BE EXECUTED IN THEIR RESPECTIVE NAMES WITH THEIR SEALS AFFIXED HERETO.

Janis Barnett (SEAL)
JANIS BARNETT

STATE EXCHANGE BANK
Clifford L. Currie
Gerald H. Gray
(CORPORATE SEAL)

ACKNOWLEDGEMENT:

STATE OF FLORIDA:

COUNTY OF COLUMBIA:

THE FOREGOING INSTRUMENT WAS ACKNOWLEDGED BEFORE ME BY CLIFFORD L. CURRIE AND GERALD H. GRAY, AS VICE-PRESIDENT AND ASSISTANT CASHIER OF THE STATE EXCHANGE BANK, A FLORIDA BANKING CORPORATION AND BY JANIS BARNETT, A FREE AGENT.

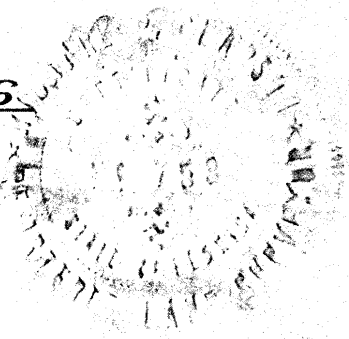
Ida P. Wise (Smith)
NOTARY PUBLIC STATE OF FLA.
MY COMMISSION EXPIRES
History Public State of Florida, 1877-1892
my Commission Expires April 14, 1977 A.D.
Bonded by American Fire & Marine Insurance Co. (NOTARIAL SEAL)

SURVEYORS' CERTIFICATION:

I HEREBY CERTIFY THAT I AM A DULY AUTHORIZED LAND SURVEYOR AND THAT A SURVEY OF THE LANDS HEREON DESCRIBED HAS BEEN MADE UNDER MY RESPONSIBLE DIRECTION AND SUPERVISION AND SUBDIVIDED AS SHOWN ON THIS PLAT, AND THAT PERMANENT REFERENCE MONUMENTS AND PERMANENT CONTROL POINTS HAVE BEEN PLACED ACCORDING TO CHAPTER 177, FLORIDA STATUTES, PLATS BEING A TRUE AND CORRECT REPRESENTATION OF SAID SURVEY.

CLARSON AND BATTLE - LAND SURVEYORS

Richard P. Clarson
RICHARD P. CLARSON
REG. SURVEYOR No. 753 FLORIDA
DATE: DECEMBER 26, 1974 A.D.



APPROVED BY THE BOARD OF COUNTY COMMISSIONERS:

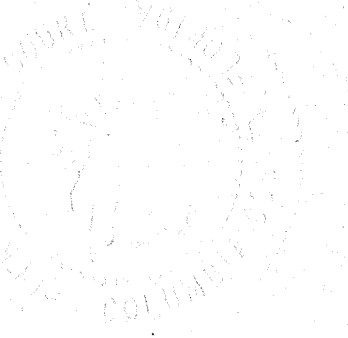
COLUMBIA COUNTY, FLORIDA:

SIGNED: James Montgomery, CHAIRMAN
ATTEST: W. E. Green, CLERK
DATE: 12 30 - 74, 1974 A.D.

CERTIFICATE OF THE CLERK:

FILE NUMBER 74-9223
I HEREBY CERTIFY THAT I HAVE EXAMINED THE FOREGOING PLAT AND FIND THAT IT COMPLIES IN FORM WITH CHAPTER 177 FLORIDA STATUTES AND WAS FILED FOR RECORD THIS 31st DAY OF December AD. 1974, IN PLAT BOOK 4 PAGES 14, 15 OF THE PUBLIC RECORDS OF COLUMBIA COUNTY, FLORIDA.
4:20 P.M.

W. E. Green
CLERK OF CIRCUIT COURT IN AND
FOR COLUMBIA COUNTY, FLORIDA.



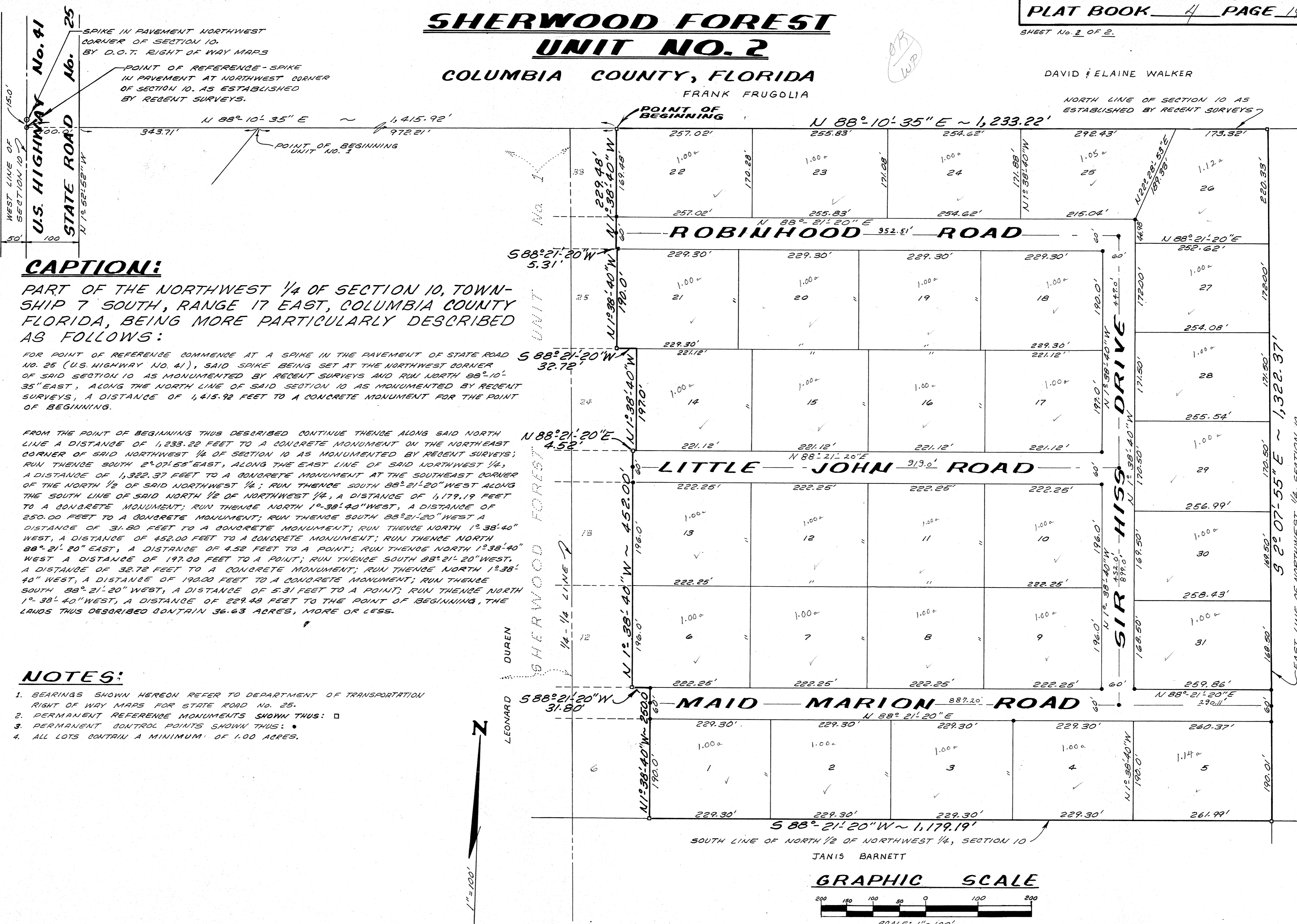
SHERWOOD FOREST UNIT NO. 2

COLUMBIA COUNTY, FLORIDA

FRANK FRUGOLIA

DAVID & ELAINE WALKER

NORTH LINE OF SECTION 10 AS ESTABLISHED BY RECENT SURVEYS



CAPTION:

PART OF THE NORTHWEST 1/4 OF SECTION 10, TOWNSHIP 7 SOUTH, RANGE 17 EAST, COLUMBIA COUNTY FLORIDA, BEING MORE PARTICULARLY DESCRIBED AS FOLLOWS:

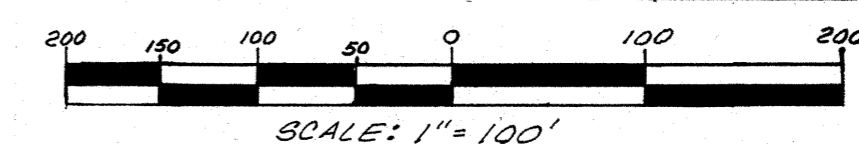
FOR POINT OF REFERENCE COMMENCE AT A SPIKE IN THE PAVEMENT OF STATE ROAD NO. 25 (U.S. HIGHWAY NO. 41), SAID SPIKE BEING SET AT THE NORTHWEST CORNER OF SAID SECTION 10 AS MONUMENTED BY RECENT SURVEYS AND RUN NORTH 88° 10' 35" EAST, ALONG THE NORTH LINE OF SAID SECTION 10 AS MONUMENTED BY RECENT SURVEYS, A DISTANCE OF 1,415.92 FEET TO A CONCRETE MONUMENT FOR THE POINT OF BEGINNING.

FROM THE POINT OF BEGINNING THUS DESCRIBED CONTINUE THENCE ALONG SAID NORTH LINE A DISTANCE OF 1,233.22 FEET TO A CONCRETE MONUMENT ON THE NORTHEAST CORNER OF SAID NORTHWEST 1/4 OF SECTION 10 AS MONUMENTED BY RECENT SURVEYS; RUN THENCE SOUTH 2° 07' 55" EAST, ALONG THE EAST LINE OF SAID NORTHWEST 1/4, A DISTANCE OF 1,322.37 FEET TO A CONCRETE MONUMENT AT THE SOUTHEAST CORNER OF THE NORTH 1/2 OF SAID NORTHWEST 1/4; RUN THENCE SOUTH 88° 21' 20" WEST ALONG THE SOUTH LINE OF SAID NORTH 1/2 OF NORTHWEST 1/4, A DISTANCE OF 1,179.19 FEET TO A CONCRETE MONUMENT; RUN THENCE NORTH 1° 38' 40" WEST A DISTANCE OF 250.00 FEET TO A CONCRETE MONUMENT; RUN THENCE SOUTH 88° 21' 20" WEST A DISTANCE OF 31.80 FEET TO A CONCRETE MONUMENT; RUN THENCE NORTH 1° 38' 40" WEST, A DISTANCE OF 452.00 FEET TO A CONCRETE MONUMENT; RUN THENCE NORTH 88° 21' 20" EAST, A DISTANCE OF 4.52 FEET TO A POINT; RUN THENCE NORTH 1° 38' 40" WEST A DISTANCE OF 197.00 FEET TO A POINT; RUN THENCE SOUTH 88° 21' 20" WEST, A DISTANCE OF 32.72 FEET TO A CONCRETE MONUMENT; RUN THENCE NORTH 1° 38' 40" WEST, A DISTANCE OF 190.00 FEET TO A CONCRETE MONUMENT; RUN THENCE SOUTH 88° 21' 20" WEST, A DISTANCE OF 5.31 FEET TO THE POINT OF BEGINNING, THE LANDS THUS DESCRIBED CONTAIN 36.63 ACRES, MORE OR LESS.

NOTES:

1. BEARINGS SHOWN HEREON REFER TO DEPARTMENT OF TRANSPORTATION RIGHT OF WAY MAPS FOR STATE ROAD NO. 25.
2. PERMANENT REFERENCE MONUMENTS SHOWN THUS: □
3. PERMANENT CONTROL POINTS SHOWN THUS: ●
4. ALL LOTS CONTAIN A MINIMUM OF 1.00 ACRES.

GRAPHIC SCALE



1" = 100'

MARY HOWELL