

# STEPHEN FOSTER FOREST

BEING A PART OF THE NORTHWEST 1/4 SECTION 18  
TOWNSHIP 2 SOUTH, RANGE 16 EAST,  
COLUMBIA COUNTY, FLORIDA

### DESCRIPTION:

COMMENCE at the Northwest Corner of Section 18, Township 2 South, Range 16 East, Columbia County, Florida and run N88°43'04"E along the North Line of Section 18 a distance of 511.73 feet to the Point of Beginning; thence continue N88°43'04"E along said North Line 390 feet More or Less to the Waters Edge on the Left or Southerly Side of the Suwannee River; thence Southeasterly along the Waters Edge and with the Meander of said Suwannee River 1750 feet More or Less to a point; thence S0°56'49"E 60 feet More or Less to a Concrete P.R.M.; thence continue S0°56'49"E along same Line 440.67 feet to a Concrete P.R.M., said line being 425 feet West of and Parallel to the East Line of the NW 1/4, Section 18; thence S88°34'27"W 458.11 feet; thence N0°56'49"W 237.90 feet; thence S84°54'42"W 162.37 feet; thence N47°13'56"W 1310.55 feet; thence N23°53'08"E 54.03 feet; thence N47°13'56"W 162.27 feet; thence N23°53'08"E 166.73 feet; thence N50°52'56"W 45.03 feet; thence N74°26'11"W 217.33 feet; thence N8°50'11"W 86.46 feet to the Point of Beginning.

### DEDICATION:

KNOW ALL MEN by these present that SUWANCOL CORPORATION, a Florida Corporation, has caused the lands hereon described to be surveyed, laid out, subdivided, and platted, to be known as STEPHEN FOSTER FOREST, in witness thereof the said SUWANCOL CORPORATION has caused these present to be signed in its name by its President and Assistant Secretary and its Corporate seal to be affixed, and that the Streets and Roads as shown are hereby dedicated to the Public.

SUWANCOL CORPORATION

Signed Lennil H. Dicks President  
Attest Lillian B. Bedenbaugh Asst. Secretary  
Date May 10, 1968

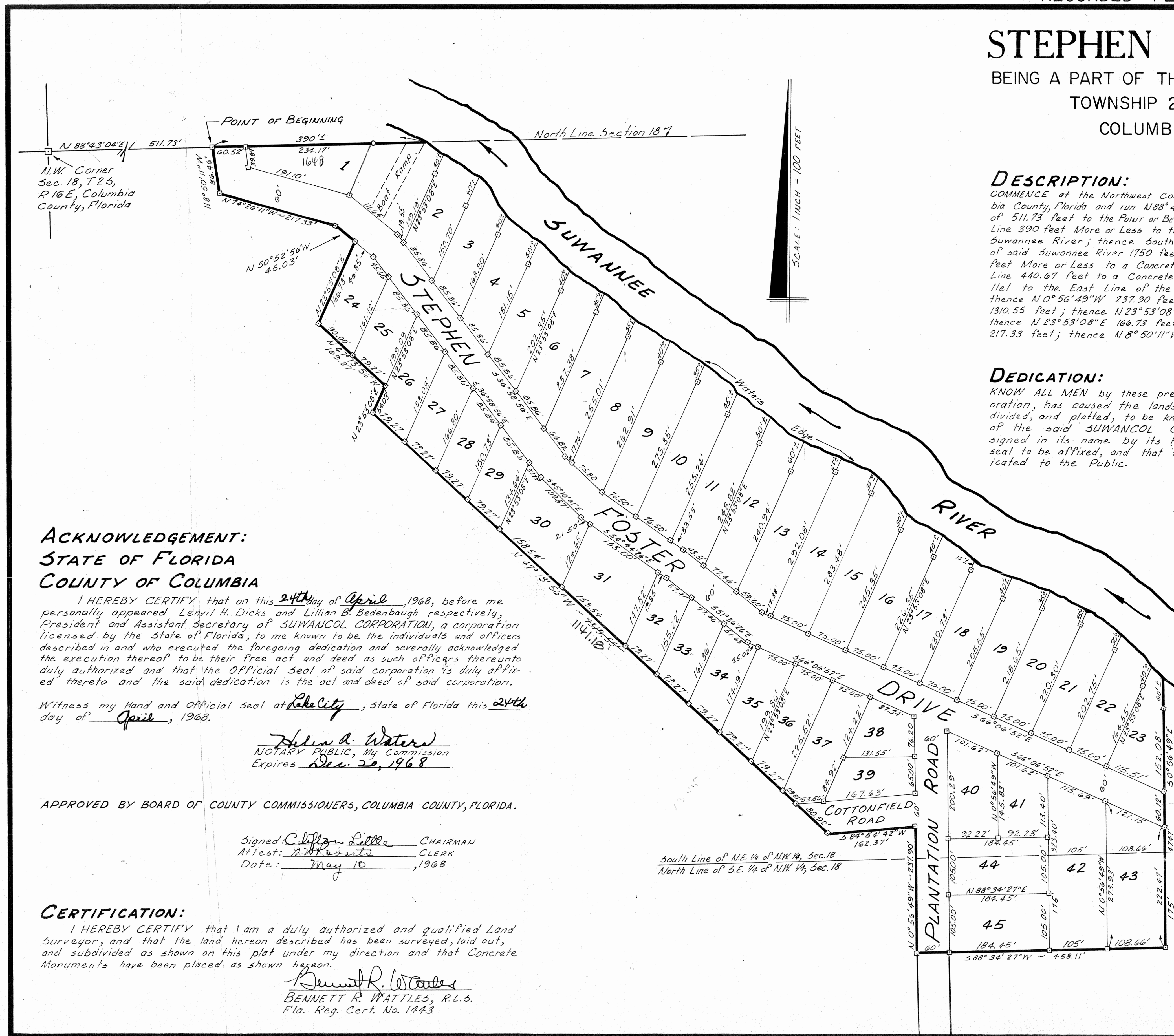
Witness Helena A. Waters  
Witness Lennil H. Dicks

APPROVED BY BOARD OF COUNTY COMMISSIONERS, COLUMBIA COUNTY, FLORIDA

Signed Clifton Little Chairman  
Attest B. P. Roberts Clerk  
Date May 10 1968

### LEGEND:

1. □ = 4"X4"X42" Concrete P.R.M.
2. Bearings based on Florida State Plane Coordinate System.
3. Concrete P.R.M.'s placed on Lot Lines at top of bank along Suwannee River.
4. ○ = Iron Pin



### ACKNOWLEDGEMENT:

STATE OF FLORIDA  
COUNTY OF COLUMBIA

I HEREBY CERTIFY that on this 24th day of April, 1968, before me personally appeared Lennil H. Dicks and Lillian B. Bedenbaugh respectively, President and Assistant Secretary of SUWANCOL CORPORATION, a corporation licensed by the State of Florida, to me known to be the individuals and officers described in and who executed the foregoing dedication and severally acknowledged the execution thereof to be their free act and deed as such officers thereunto duly authorized and that the Official Seal of said corporation is duly affixed thereto and the said dedication is the act and deed of said corporation.

Witness my Hand and Official Seal at Lake City, State of Florida this 24th day of April, 1968.

Helena A. Waters  
NOTARY PUBLIC, My Commission  
Expires Dec. 20, 1968

APPROVED BY BOARD OF COUNTY COMMISSIONERS, COLUMBIA COUNTY, FLORIDA.

Signed Clifton Little CHAIRMAN  
Attest: B. P. Roberts CLERK  
Date: May 10, 1968

### CERTIFICATION:

I HEREBY CERTIFY that I am a duly authorized and qualified Land Surveyor, and that the land hereon described has been surveyed, laid out, and subdivided as shown on this plat under my direction and that Concrete Monuments have been placed as shown hereon.

Bennett R. Wattles  
BENNETT R. WATTLES, R.L.S.  
Fla. Reg. Cert. No. 1443

South Line of N.E. 1/4 of NW 1/4, Sec. 18  
North Line of S.E. 1/4 of NW 1/4, Sec. 18