

SUZANNE SUBDIVISION - UNIT 1

BEING A SUBDIVISION OF A PART OF THE SW 1/4 OF NE 1/4 AND A PART OF THE N 1/2 OF NE 1/4 OF SECTION 3, TOWNSHIP 4 SOUTH, RANGE 17 EAST, COLUMBIA COUNTY, FLORIDA

RECORDED
BOOK 4 PAGE 91
1978 AUG - 3 AM 11:22
Pray & Childs
CLERK OF CIRCUIT COURT
COLUMBIA COUNTY FLORIDA

DESCRIPTION:

BEGIN AT THE NORTHWEST CORNER OF THE SW 1/4 OF NE 1/4 OF SECTION 3, TOWNSHIP 4 SOUTH, RANGE 17 EAST, COLUMBIA COUNTY, FLORIDA, AND RUN N 0°48'28"W ALONG THE WEST LINE OF THE NE 1/4 OF SAID SECTION, 196.06 FEET, THENCE S 82°46'03"E, 172.66 FEET, THENCE N 36°00'52"E, 106.20 FEET, THENCE N 43°50'19"E, 55.70 FEET, THENCE N 35°51'51"W, 364.60 FEET TO THE CENTERLINE OF A CREEK, THENCE N 40°43'02"E ALONG SAID CREEK, 70.46 FEET, THENCE N 43°13'02"E ALONG SAID CREEK, 150.90 FEET, THENCE N 66°57'32"E ALONG SAID CREEK, 120.19 FEET, THENCE S 81°43'13"E ALONG SAID CREEK, 108.86 FEET, THENCE N 21°48'02"E ALONG SAID CREEK, 52.80 FEET, THENCE S 64°03'43"E ALONG SAID CREEK, 104.88 FEET, THENCE N 69°34'25"E ALONG SAID CREEK, 81.65 FEET, THENCE N 4°25'20"W ALONG SAID CREEK, 52.35 FEET, THENCE N 63°36'10"E ALONG SAID CREEK, 92.08 FEET, THENCE S 29°21'20"E ALONG SAID CREEK, 19.32 FEET, THENCE N 81°14'10"E ALONG SAID CREEK, 88.95 FEET, THENCE S 18°36'20"E ALONG SAID CREEK, 51.32 FEET, THENCE S 0°27'50"E, 767.63 FEET, THENCE N 82°20'02"E, 1179.66 FEET, THENCE S 65°01'34"E, 143.84 FEET, THENCE S 1°36'30"E, 61.31 FEET, THENCE N 73°14'50"W, 167.84 FEET, THENCE N 83°02'28"W, 37.60 FEET, THENCE S 82°20'02"W, 313.10 FEET, THENCE S 0°26'18"E, 131.50 FEET, THENCE S 89°34'42"W, 234.34 FEET TO THE NORTHEAST CORNER OF SAID SW 1/4 OF NE 1/4, THENCE S 1°02'48"E, 33.56 FEET, THENCE S 89°34'36"W, 255.00 FEET, THENCE S 1°02'48"E, 102.00 FEET, THENCE S 89°34'36"W, 450.00 FEET, THENCE S 1°02'48"E, 102.00 FEET, THENCE S 89°34'36"W, 195.00 FEET, THENCE S 1°02'48"E, 102.00 FEET, THENCE S 89°34'36"W, 255.00 FEET, THENCE N 1°02'48"W, 31.27 FEET, THENCE S 89°34'36"W, 219.39 FEET TO THE WEST LINE OF SAID NE 1/4, THENCE N 0°48'28"W ALONG SAID WEST LINE 309.73 FEET TO THE POINT-OF-BEGINNING.

DEDICATION:

KNOW ALL MEN BY THESE PRESENTS THAT LENVIL H. DICKS, AS OWNER, HAS CAUSED THE LANDS HEREIN DESCRIBED TO BE SURVEYED, LAID OUT, SUBDIVIDED AND PLATTED TO BE KNOWN AS "SUZANNE SUBDIVISION - UNIT 1," AND THAT THE ROADS AND EASEMENTS ARE HEREBY DEDICATED TO THE PUBLIC.

SIGNED Lenvil H. Dicks
LENVIL H. DICKS, OWNER
DATE 7/27/78

WITNESS Marion Mann
WITNESS Charles J. Maxwell

ACKNOWLEDGEMENT:

STATE OF FLORIDA
COUNTY OF COLUMBIA
ON THIS 29th DAY OF July, A.D. 1978, THE FOREGOING INSTRUMENT WAS ACKNOWLEDGED BEFORE ME BY LENVIL H. DICKS.

SIGNED Charles J. Maxwell
NOTARY PUBLIC, STATE OF FLORIDA
MY COMMISSION EXPIRES 10-8-80

SURVEYOR'S CERTIFICATE:

I HEREBY CERTIFY THAT THIS PLAT IS A TRUE AND CORRECT REPRESENTATION OF THE LANDS SURVEYED AND SHOWN HEREON, THAT THE SURVEY WAS MADE UNDER MY RESPONSIBLE DIRECTION AND SUPERVISION, THAT PERMANENT REFERENCE MONUMENTS AND PERMANENT CONTROL POINTS HAVE BEEN PLACED AS SHOWN, AND THAT THE SURVEY DATA SHOWN HEREON COMPLIES WITH ALL THE REQUIREMENTS OF CHAPTER 177, FLORIDA STATUTES.

DATE July 27, 1978
SIGNED W.C. Hale
W.C. HALE, LAND SURVEYOR
FLORIDA CERTIFICATE NO. 1519

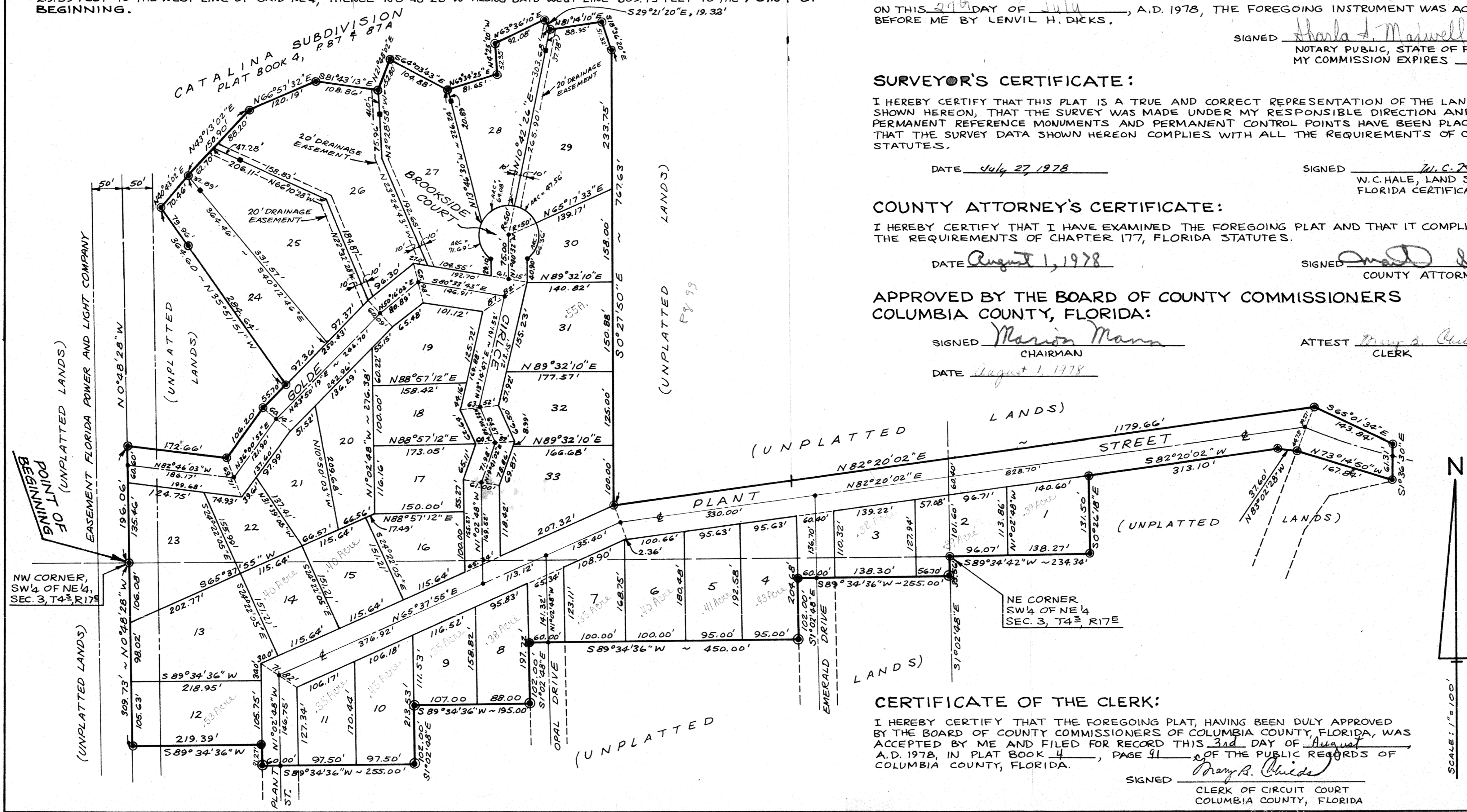
COUNTY ATTORNEY'S CERTIFICATE:

I HEREBY CERTIFY THAT I HAVE EXAMINED THE FOREGOING PLAT AND THAT IT COMPLIES IN FORM WITH THE REQUIREMENTS OF CHAPTER 177, FLORIDA STATUTES.

DATE August 1, 1978
SIGNED Amel D. Page
COUNTY ATTORNEY

APPROVED BY THE BOARD OF COUNTY COMMISSIONERS COLUMBIA COUNTY, FLORIDA:

SIGNED Marion Mann
CHAIRMAN
DATE August 1, 1978
ATTEST Pray & Childs
CLERK



CERTIFICATE OF THE CLERK:

I HEREBY CERTIFY THAT THE FOREGOING PLAT, HAVING BEEN DULY APPROVED BY THE BOARD OF COUNTY COMMISSIONERS OF COLUMBIA COUNTY, FLORIDA, WAS ACCEPTED BY ME AND FILED FOR RECORD THIS 3rd DAY OF August, A.D. 1978, IN PLAT BOOK 4, PAGE 91 OF THE PUBLIC RECORDS OF COLUMBIA COUNTY, FLORIDA.

SIGNED Pray & Childs
CLERK OF CIRCUIT COURT
COLUMBIA COUNTY, FLORIDA

