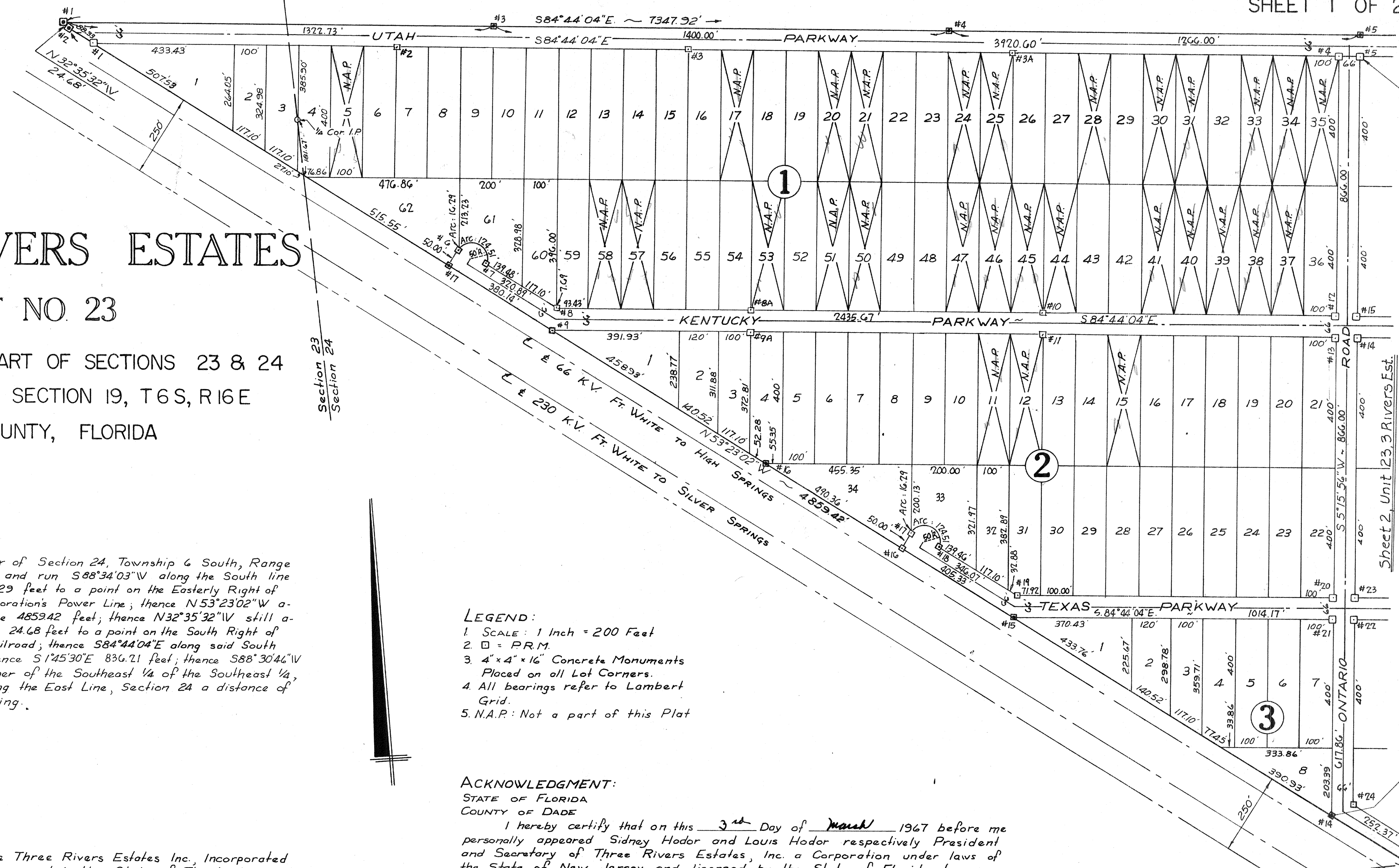


U.S. Highway # 27

ATLANTIC COAST LINE RAILROAD



THREE RIVERS ESTATES

UNIT NO. 23

A SUBDIVISION OF A PART OF SECTIONS 23 & 24
T 6 S, R 15 E AND SECTION 19, T 6 S, R 16 E
COLUMBIA COUNTY, FLORIDA

DESCRIPTION:

Begin at the Southeast Corner of Section 24, Township 6 South, Range 15 East, Columbia County, Florida and run S88°34'03"W along the South line of Section 24 a distance of 2172.29 feet to a point on the Easterly Right of Way Line of the Florida Power Corporation's Power Line; thence N32°35'32"W along said Easterly Right of Way Line 485942 feet; thence N32°35'32"W still along said Easterly Right of Way Line 24.68 feet to a point on the South Right of Way Line of the Atlantic Coast Line Railroad; thence S84°44'04"E along said South Right of Way Line 7347.92 feet; thence S1°45'30"E 836.71 feet; thence S88°30'46"W 1236.86 feet to the Northeast Corner of the Southeast 1/4 of the Southeast 1/4, Section 24; thence S1°40'33"E along the East Line, Section 24 a distance of 1321.95 feet to the Point of Beginning.

LEGEND:

1. SCALE: 1 Inch = 200 Feet
2. □ = P.R.M.
3. 4"x4"x16" Concrete Monuments Placed on all Lot Corners.
4. All bearings refer to Lambert Grid.
5. N.A.P.: Not a part of this Plat

ACKNOWLEDGMENT:

STATE OF FLORIDA
COUNTY OF DADE

I hereby certify that on this 3rd Day of March 1967 before me personally appeared Sidney Hodor and Louis Hodor respectively President and Secretary of Three Rivers Estates, Inc. a Corporation under laws of the State of New Jersey and licensed by the State of Florida to me known to be the Individuals and officers described in and who executed the foregoing Dedication and severally acknowledged the execution thereof to be their free Act and Deed as such officers thereunto duly authorized and that the official seal of said Corporation is duly affixed thereto and the said Dedication is the Act and Deed of said Corporation. Witness my hand and official Seal at Miami State of Florida this 3rd Day of March 1967.

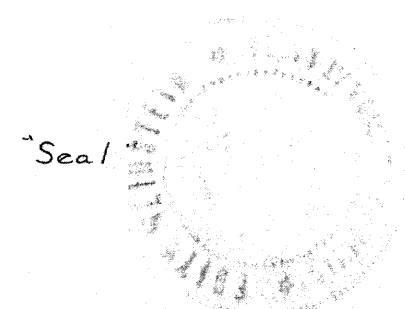
Edith Weinstein
Notary Public, State of Florida
My Commission Expires March 1968

DEDICATION:

Know all men present that the Three Rivers Estates Inc., Incorporated in the State of New Jersey and Licensed in the State of Florida, has caused the lands herein described to be surveyed Laid out Sub-Divided and Platted to be known as Three Rivers Estates, Unit No. 23 in witness whereof the said Three Rivers Estates Inc. has caused these present to be signed in its name by its President and Secretary and its Corporate Seal to be affixed and that the Streets and Boulevards as shown are hereby dedicated to the Public.

SIGNED Sidney Hodor PRESIDENT
ATTEST Louis Hodor SECRETARY
DATE March 3, 1967

THREE RIVERS ESTATES, INC.



Surveyor's Seal

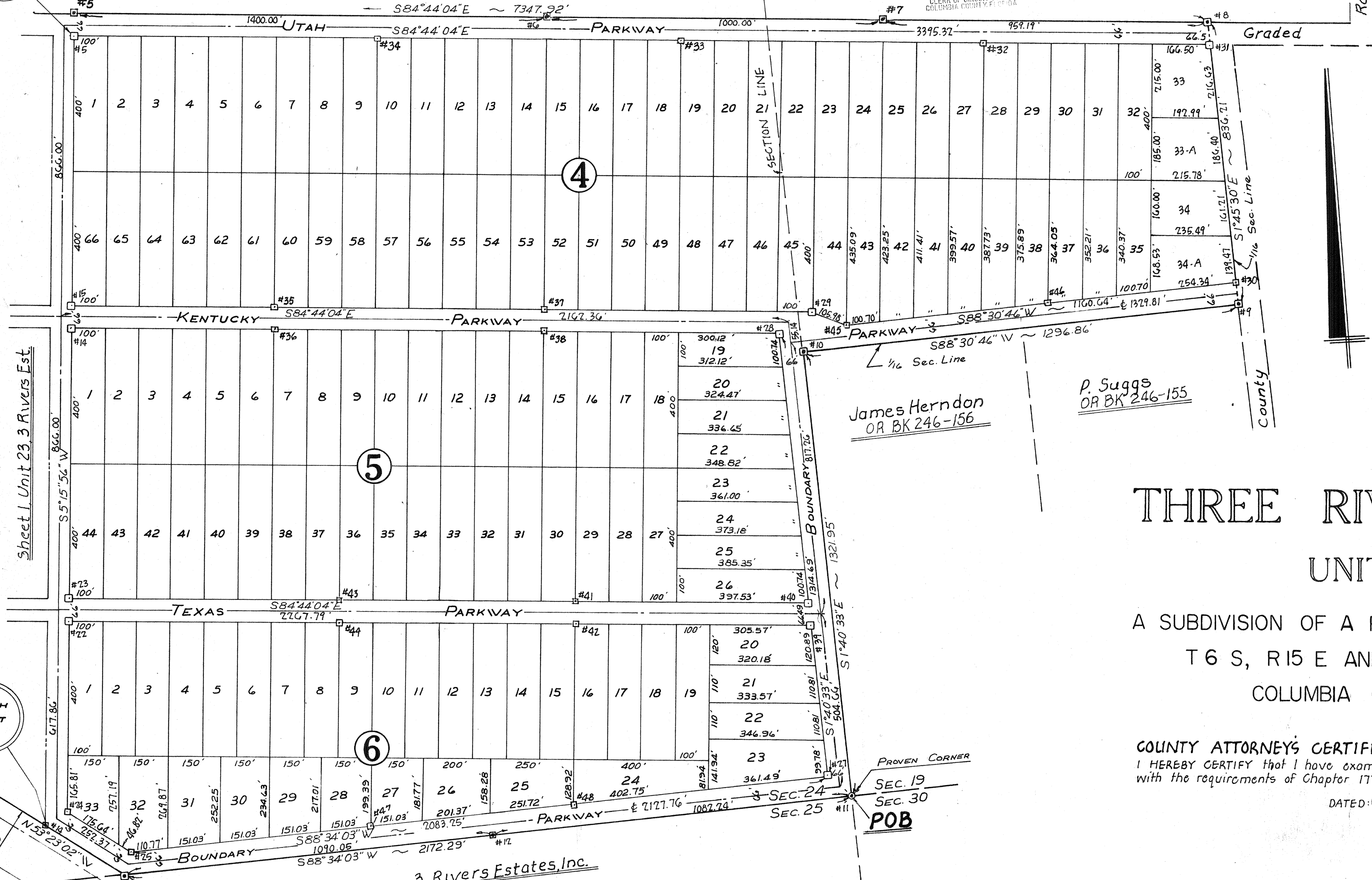
FILE NO. 78-2072
 RECORDED
 BOOK 4 PAGE 80-80A
 1978 APR 6 PM 3:20
 Mary B. Chide
 CLERK OF CIRCUIT COURT
 COLUMBIA COUNTY FLORIDA

13

MATCH POINT "B"

MATCH POINT "A"

Sheet 1, Unit 23, 3 Rivers Est.



LEGEND:
 1. SCALE: 1 Inch = 200 Feet
 2. □ = P.R.M. □ = P.C.P.
 3. 4" x 4" x 16" Concrete Monuments Placed on all Lot Corners.
 4. All Bearings refer to Lambert Grid.
 5. Boundary Survey by Transit and Steel tape: Error of Closure = 1:30,270 before balancing of Field Data.

James Herndon
 OR BK 246-156
 P. Suggs
 OR BK 246-155

THREE RIVERS ESTATES UNIT NO. 23

A SUBDIVISION OF A PART OF SECTIONS 23 & 24,
 T 6 S, R 15 E AND SECTION 19, T 6 S, R 16 E
 COLUMBIA COUNTY, FLORIDA

COUNTY ATTORNEYS CERTIFICATE:
 I HEREBY CERTIFY that I have examined the foregoing plat and that it complies in form with the requirements of Chapter 177, Florida Statutes.
 DATED: April 4, 1978

W. D. Page
 COUNTY ATTORNEY

SURVEYORS CERTIFICATE:
 I HEREBY CERTIFY that this plat is a true and correct representation of the lands surveyed and shown hereon, that the survey was made under my responsible direction and supervision, that permanent reference monuments and permanent control points have been placed as shown, and that the survey data shown hereon complies with all of the requirements of Chapter 177, Florida Statutes.

Bennett R. Wattles
 BENNETT R. WATTLES, P.L.S.
 FLA. REG. CERT. NO. 1443
 DATE: December 16, 1977

3 Rivers Estates, Inc.
 APPROVED BY COUNTY COMMISSION
 COLUMBIA COUNTY, FLORIDA
 DATE: April 4, 1978
 SIGNED: *Marion Mann* Chairman
 ATTEST: *Mary B. Chide* Clerk

CERTIFICATE OF THE CLERK
 I HEREBY CERTIFY that the foregoing plat, having been duly approved by the Board of County Commissioners of Columbia County, Florida, was accepted by me and filed for Record this 6th day of April, A.D. 1978, in Plat Book 4, Pages 80A, 80A of the Public Records of Columbia County, Florida.
Mary B. Chide
 Clerk of Circuit Court
 Columbia County, Florida

PROVEN CORNER
 SEC. 19
 SEC. 30
 POB

T 6 S, R 15 E
 T 6 S, R 16 E

1/4 COR. PROVEN COR. 2" PIPE
 N 25° 23' 02" W
 S 66° 06' 00" E
 230 KV LINE