

FILE NUMBER **93-05183**
 RECORDED IN THE OFFICIAL RECORDS
 OF COLUMBIA COUNTY, FLORIDA
 ON **5-7-1993** AT **10:22** O'CLOCK **A.M.**
 BY **[Signature]**
 CLERK OF COUNTY RECORDS
 COLUMBIA COUNTY, FLORIDA

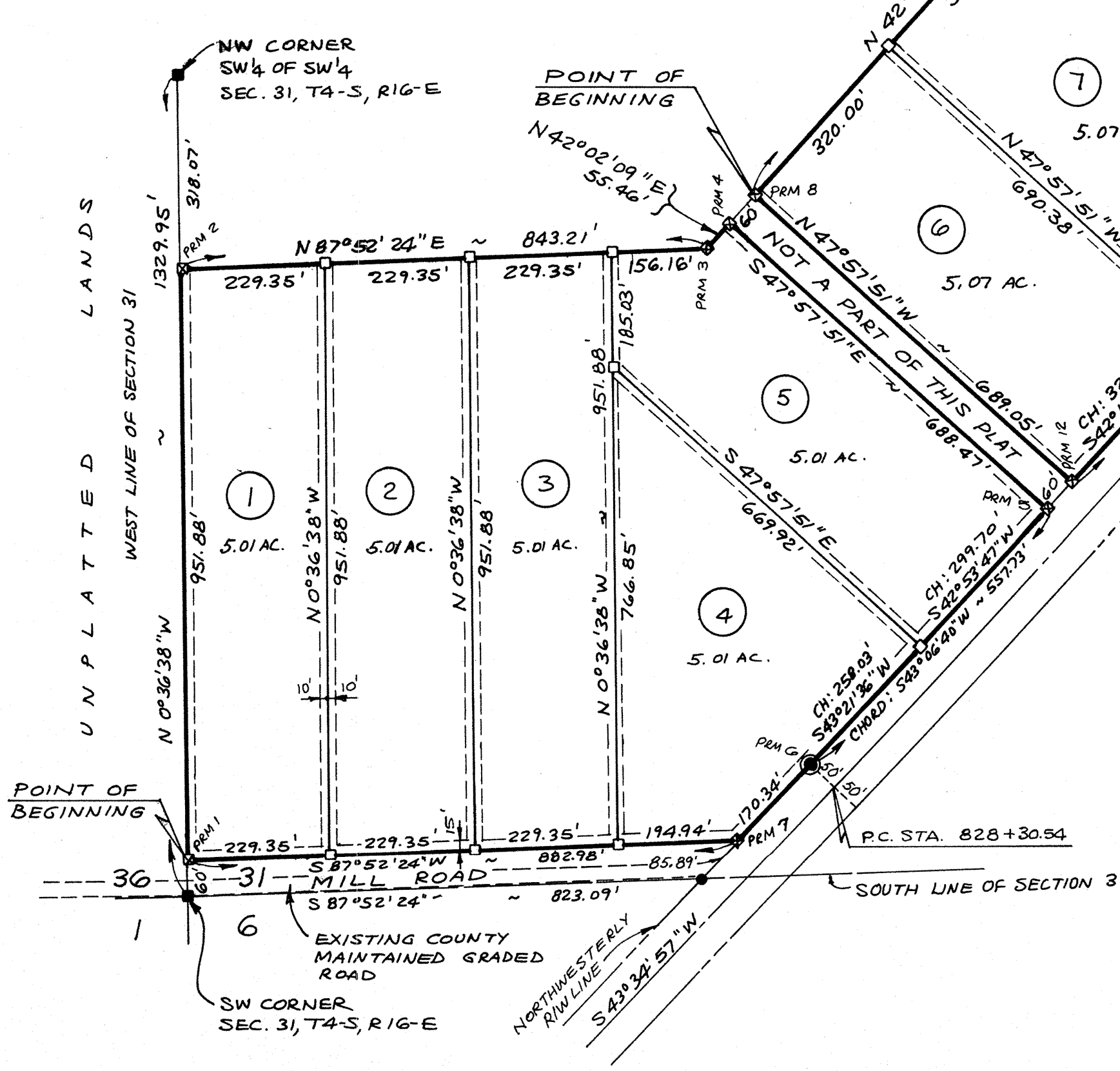
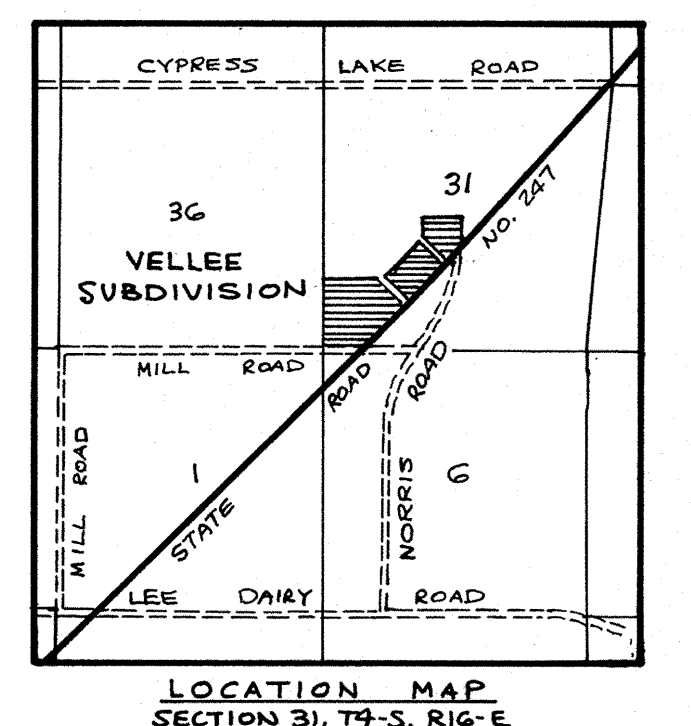
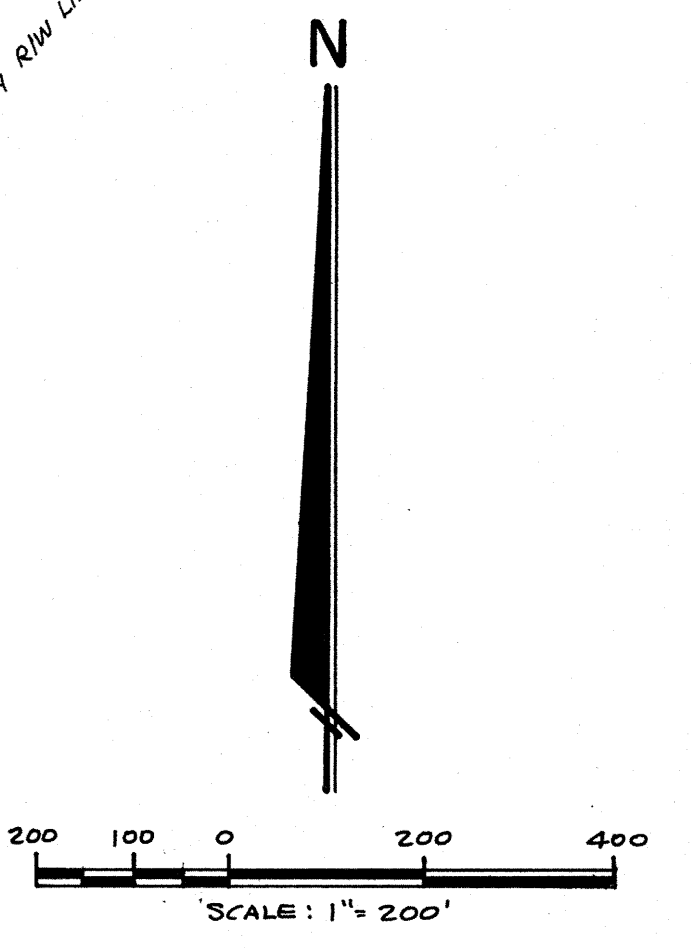
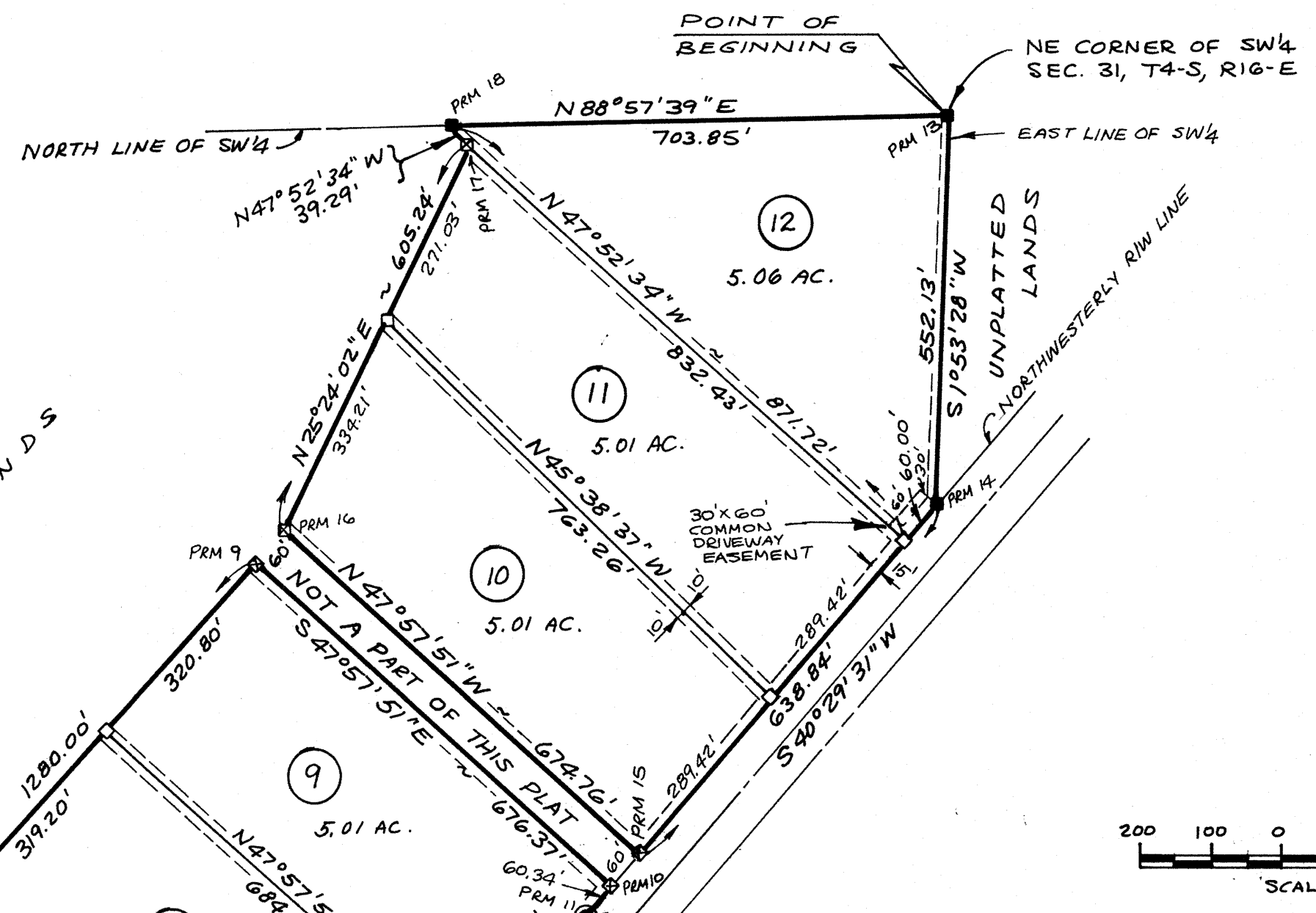
NOTES

1. PRELIMINARY PLAN APPROVED ON MARCH 18, 1993.
2. BEARINGS PROJECTED FROM PREVIOUS WORK IN SECTION 31 BY W.C. HALE & ASSOC.
3. ERROR OF CLOSURE HAS BEEN MATHEMATICALLY ADJUSTED TO ZERO.
4. TOTAL AREA IN SUBDIVISION IS 60.31 ACRES.
5. ACCORDING TO THE FLOOD INSURANCE RATE MAP (COMMUNITY PANEL NO. 120070 0175 B, EFFECTIVE DATE JANUARY 6, 1988) THE SUBDIVISION LIES IN ZONE X, AN AREA DETERMINED TO BE OUTSIDE THE 500-YEAR FLOOD PLAIN.
6. UTILITY EASEMENTS ARE AS FOLLOWS:
 ALONG ROADS - 15 FEET
 ALONG SIDE LOT LINES - 10 FEET EACH SIDE

SPECIAL NOTES

NOTICE: ALL UTILITY EASEMENTS SHOWN ON THIS PLAT SHALL BE EASEMENTS FOR THE CONSTRUCTION, INSTALLATION, MAINTENANCE AND OPERATION OF ELECTRIC, TELEPHONE, GAS, CABLE TELEVISION SERVICES AND ANY OTHER PUBLIC UTILITIES.

NOTICE: THERE MAY BE ADDITIONAL RESTRICTIONS THAT ARE NOT RECORDED ON THIS PLAT THAT MAY BE FOUND IN THE PUBLIC RECORDS OF THIS COUNTY.



- LEGEND**
- 4"x4" CONCRETE MONUMENT FOUND (IF PRM, NUMBER NOT STAMPED ON MONUMENT)
 - PERMANENT REFERENCE MONUMENT (PRM) SET (4"x4" CONCRETE MONUMENT STAMPED W.C. HALE & ASSOC., INC., PLS 4303)
 - IRON PIPE FOUND
 - DEPARTMENT OF TRANSPORTATION RIGHT-OF-WAY MONUMENT FOUND (1/2" REBAR)
 - 4"x4" CONCRETE MONUMENT SET AT EACH LOT CORNER (STAMPED W.C. HALE & ASSOC., INC., PLS 4303)

VELLEE SUBDIVISION
 A SUBDIVISION IN
 THE SW 1/4, SECTION 31, T4-S, R16-E
 COLUMBIA COUNTY, FLORIDA

OFFICIAL RECORDS
 BOOK 22 PAGE 262