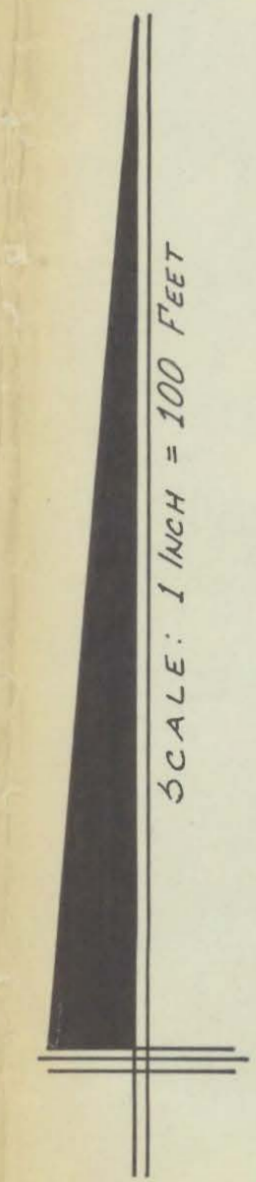
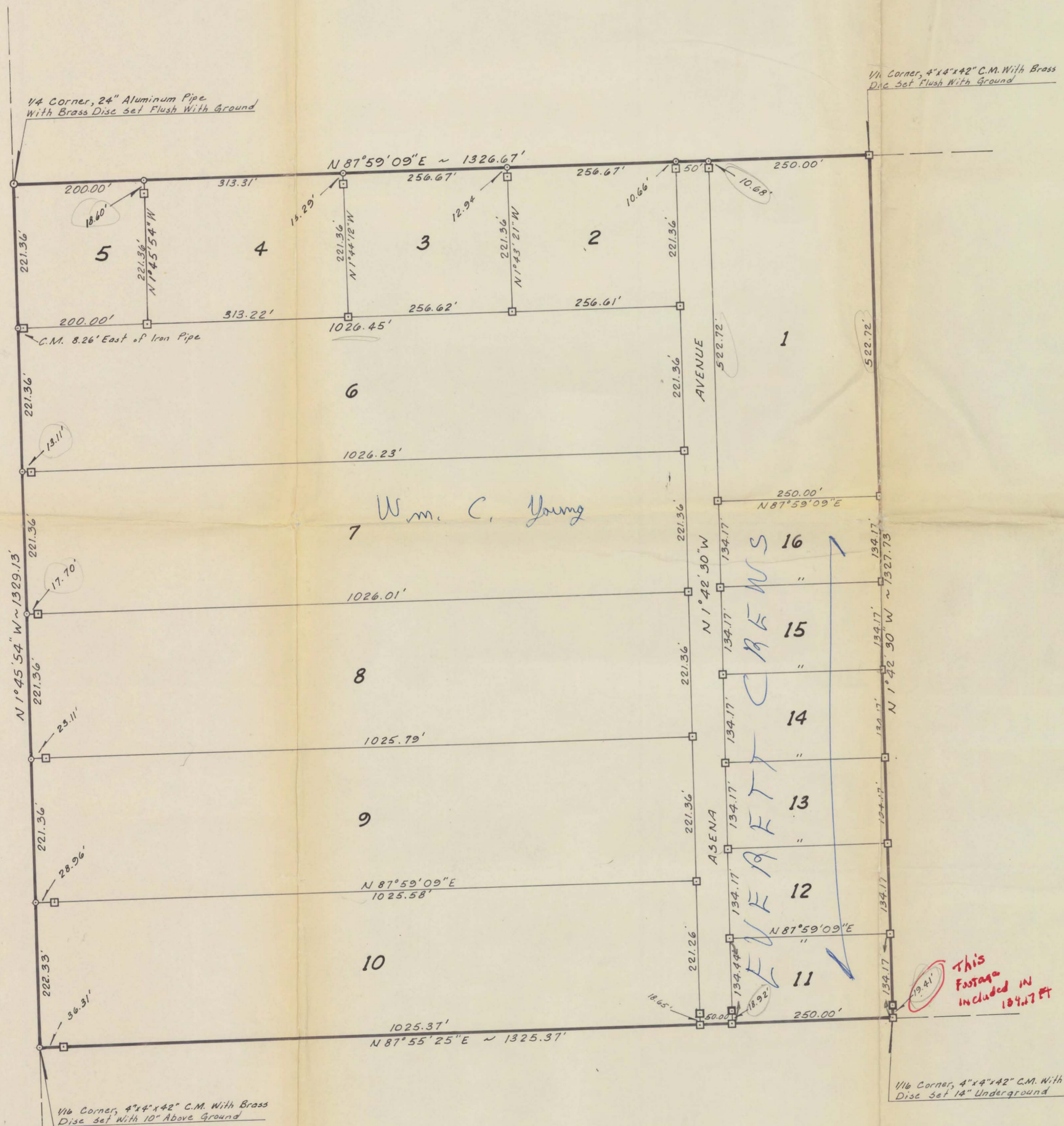


WEST TROY PINES

SUBDIVISION

OF THE N.W. 1/4 OF THE S.W. 1/4 OF
SECTION 10, TOWNSHIP 4 SOUTH, RANGE 16 EAST,
COLUMBIA COUNTY, FLORIDA



LEGEND:

- 1. □ = Concrete Monuments, unless otherwise noted.
- 2. ○ = Iron Pipe, unless otherwise noted.
- 3. Concrete Monuments placed on all lot corners except where offsets are shown.

CERTIFICATION:

I HEREBY CERTIFY that I am a duly authorized and qualified Land Surveyor, and that the land hereon shown has been surveyed, Laid Out, and subdivided as shown on this Plat under my direction and that Concrete Monuments and Iron Pipes have been placed as shown hereon.

Signed: Bennett R. Wattle
BENNETT R. WATTLES, R.L.S.
Fla. Reg. Cert. No. 1443

This footage included in 104.7 Ft

B-11
41

BENNETT R. WATTLES & ASSOCIATES, Incorporated 950 S. Ridgewood Dr., Lake City, Fla.	Date: _____ Drawn: _____ Checked: _____ Scale: _____ Field Book: _____ File: _____ Traverse: _____ Sheet: _____
SUWANCOL CORPORATION	
<u>Bennett R. Wattle</u>	